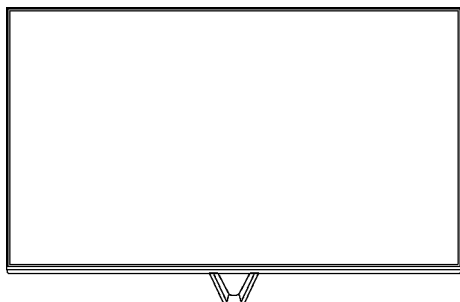


# Service Manual

Plasma Television

Model No. **TH-P65VT60H**


GPF16D-A Chassis



## **WARNING**

This service information is designed for experienced repair technicians only and is not designed for use by the general public. It does not contain warnings or cautions to advise non-technical individuals of potential dangers in attempting to service a product. Products powered by electricity should be serviced or repaired only by experienced professional technicians. Any attempt to service or repair the product or products dealt with in this service information by anyone else could result in serious injury or death.

## **IMPORTANT SAFETY NOTICE**

There are special components used in this equipment which are important for safety. These parts are marked by  in the Schematic Diagrams, Circuit Board Diagrams, Exploded Views and Replacement Parts List. It is essential that these critical parts should be replaced with manufacturer's specified parts to prevent shock, fire or other hazards. Do not modify the original design without permission of manufacturer.

# TABLE OF CONTENTS

	PAGE
<b>1 Safety Precautions</b>	<b>3</b>
1.1. General Guidelines	3
1.2. Touch-Current Check	3
<b>2 Warning</b>	<b>4</b>
2.1. Prevention of Electrostatic Discharge (ESD) to Electrostatically Sensitive (ES) Devices	4
2.2. About lead free solder (PbF)	5
<b>3 Service Navigation</b>	<b>6</b>
3.1. PCB Layout	6
<b>4 Specifications</b>	<b>7</b>
<b>5 Technical Descriptions</b>	<b>9</b>
5.1. Specification of KEY for DTCP-IP, One-to- One, Widevine and Netflix	9
5.2. USB HDD Recording	9
5.3. Panel-Type setting	9
<b>6 Service Mode</b>	<b>10</b>
6.1. How to enter into Service Mode	10
6.2. Option - Mirror	12
6.3. Service tool mode	12
6.4. DRV Check - USBHDD Check	13
6.5. Hotel mode	13
6.6. Data Copy by USB Memory	14
<b>7 Troubleshooting Guide</b>	<b>17</b>
7.1. Check of the IIC bus lines	17
7.2. Power LED Blinking timing chart	18
7.3. No Power	19
7.4. No Picture	19
7.5. Local screen failure	20
<b>8 Service Fixture &amp; Tools</b>	<b>21</b>
8.1. SC jig	21
<b>9 Disassembly and Assembly Instructions</b>	<b>22</b>
9.1. Disassembly Flow Chart for the Unit	22
9.2. Disassembly Procedure for the Unit	23
<b>10 Measurements and Adjustments</b>	<b>31</b>
10.1. Adjustment	31
<b>11 Block Diagram</b>	<b>33</b>
11.1. Main Block Diagram	33
11.2. Block (1/4) Diagram	34
11.3. Block (2/4) Diagram	35
11.4. Block (3/4) Diagram	36
11.5. Block (4/4) Diagram	37
<b>12 Wiring Connection Diagram</b>	<b>39</b>
12.1. Caution statement.	39
12.2. Wiring (1)	39
12.3. Wiring (2)	40
12.4. Wiring (3)	41
12.5. Wiring (4)	42
12.6. Wiring (5)	42
12.7. Wiring (6)	43
12.8. Wiring (7)	44

# 1 Safety Precautions

## 1.1. General Guidelines

1. When conducting repairs and servicing, do not attempt to modify the equipment, its parts or its materials.
2. When wiring units (with cables, flexible cables or lead wires) are supplied as repair parts and only one wire or some of the wires have been broken or disconnected, do not attempt to repair or re-wire the units. Replace the entire wiring unit instead.
3. When conducting repairs and servicing, do not twist the Fasten connectors but plug them straight in or unplug them straight out.
4. When servicing, observe the original lead dress. If a short circuit is found, replace all parts which have been overheated or damaged by the short circuit.
5. After servicing, see to it that all the protective devices such as insulation barriers, insulation papers shields are properly installed.
6. After servicing, make the following leakage current checks to prevent the customer from being exposed to shock hazards.

## 1.2. Touch-Current Check

1. Plug the AC cord directly into the AC outlet. Do not use an isolation transformer for this check.
2. Connect a measuring network for touch currents between each exposed metallic part on the set and a good earth ground such as a water pipe, as shown in Figure 1.
3. Use Leakage Current Tester (Simpson 228 or equivalent) to measure the potential across the measuring network.
4. Check each exposed metallic part, and measure the voltage at each point.
5. Reserve the AC plug in the AC outlet and repeat each of the above measure.
6. The potential at any point (TOUCH CURRENT) expressed as voltage  $U_1$  and  $U_2$ , does not exceed the following values:

For a. c.:  $U_1 = 35 \text{ V}$  (peak) and  $U_2 = 0.35 \text{ V}$  (peak);

For d. c.:  $U_1 = 1.0 \text{ V}$ ,

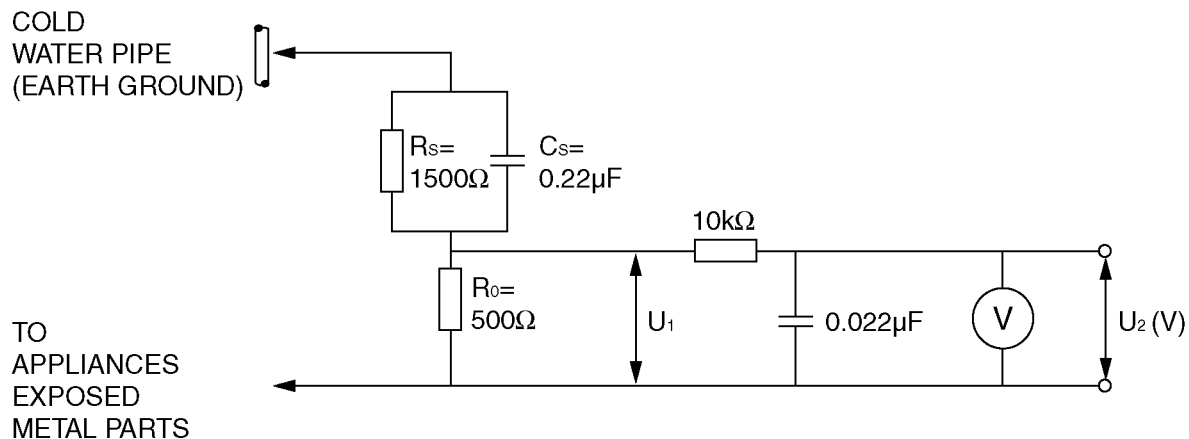
**Note:**

The limit value of  $U_2 = 0.35 \text{ V}$  (peak) for a. c. and  $U_1 = 1.0 \text{ V}$  for d. c. correspond to the values  $0.7 \text{ mA}$  (peak) a. c. and  $2.0 \text{ mA}$  d. c.

The limit value  $U_1 = 35 \text{ V}$  (peak) for a. c. correspond to the value  $70 \text{ mA}$  (peak) a. c. for frequencies greater than  $100 \text{ kHz}$ .

7. In case a measurement is out of the limits specified, there is a possibility of a shock hazard, and the equipment should be repaired and rechecked before it is returned to the customer.

### Measuring network for TOUCH CURRENTS



Resistance values in ohms ( $\Omega$ )

V: Voltmeter or oscilloscope  
(r.m.s. or peak reading)

Input resistance:  $\geq 1 \text{ M}\Omega$

Input capacitance:  $\leq 200 \text{ pF}$

Frequency range:  $15 \text{ Hz}$  to  $1 \text{ MHz}$  and d.c. respectively

NOTE - Appropriate measures should be taken to obtain the correct value in case of non-sinusoidal waveforms.

Figure 1

## 2 Warning

### 2.1. Prevention of Electrostatic Discharge (ESD) to Electrostatically Sensitive (ES) Devices

Some semiconductor (solid state) devices can be damaged easily by static electricity. Such components commonly are called Electrostatically Sensitive (ES) Devices. Examples of typical ES devices are integrated circuits and some field-effect transistors and semiconductor [chip] components. The following techniques should be used to help reduce the incidence of component damage caused by electrostatic discharge (ESD).

1. Immediately before handling any semiconductor component or semiconductor-equipped assembly, drain off any ESD on your body by touching a known earth ground. Alternatively, obtain and wear a commercially available discharging ESD wrist strap, which should be removed for potential shock reasons prior to applying power to the unit under test.
2. After removing an electrical assembly equipped with ES devices, place the assembly on a conductive surface such as aluminum foil, to prevent electrostatic charge buildup or exposure of the assembly.
3. Use only a grounded-tip soldering iron to solder or unsolder ES devices.
4. Use only an anti-static solder removal device. Some solder removal devices not classified as [anti-static (ESD protected)] can generate electrical charge sufficient to damage ES devices.
5. Do not use freon-propelled chemicals. These can generate electrical charges sufficient to damage ES devices.
6. Do not remove a replacement ES device from its protective package until immediately before you are ready to install it. (Most replacement ES devices are packaged with leads electrically shorted together by conductive foam, aluminum foil or comparable conductive material).
7. Immediately before removing the protective material from the leads of a replacement ES device, touch the protective material to the chassis or circuit assembly into which the device will be installed.

#### **Caution**

Be sure no power is applied to the chassis or circuit, and observe all other safety precautions.

8. Minimize bodily motions when handling unpackaged replacement ES devices. (Otherwise ham less motion such as the brushing together of your clothes fabric or the lifting of your foot from a carpeted floor can generate static electricity (ESD) sufficient to damage an ES device).

## 2.2. About lead free solder (PbF)

**Note:** Lead is listed as (Pb) in the periodic table of elements.

In the information below, Pb will refer to Lead solder, and PbF will refer to Lead Free Solder.

The Lead Free Solder used in our manufacturing process and discussed below is (Sn+Ag+Cu).

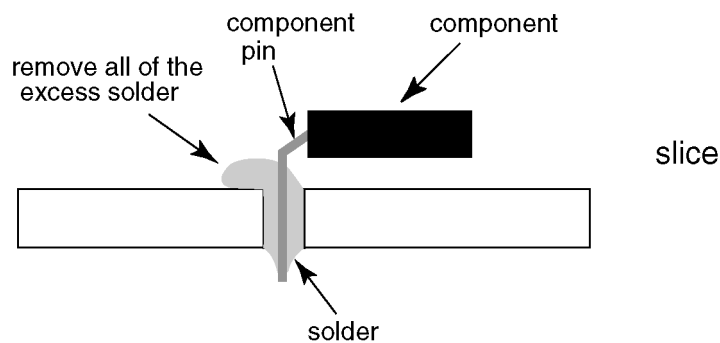
That is Tin (Sn), Silver (Ag) and Copper (Cu) although other types are available.

This model uses Pb Free solder in it's manufacture due to environmental conservation issues. For service and repair work, we'd suggest the use of Pb free solder as well, although Pb solder may be used.

PCBs manufactured using lead free solder will have the PbF within a leaf Symbol **PbF** stamped on the back of PCB.

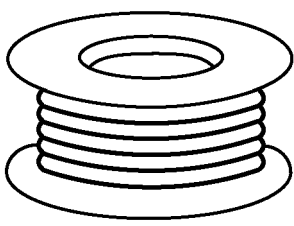
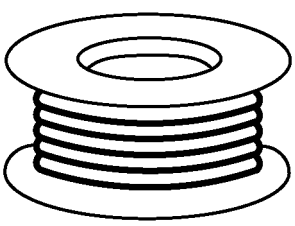
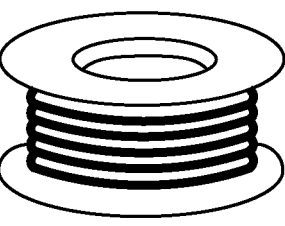
### Caution

- Pb free solder has a higher melting point than standard solder. Typically the melting point is 50 ~ 70 °F (30~40 °C) higher. Please use a high temperature soldering iron and set it to 700 ± 20 °F (370 ± 10 °C).
- Pb free solder will tend to splash when heated too high (about 1100 °F or 600 °C).  
If you must use Pb solder, please completely remove all of the Pb free solder on the pins or solder area before applying Pb solder. If this is not practical, be sure to heat the Pb free solder until it melts, before applying Pb solder.
- After applying PbF solder to double layered boards, please check the component side for excess solder which may flow onto the opposite side. (see figure below)



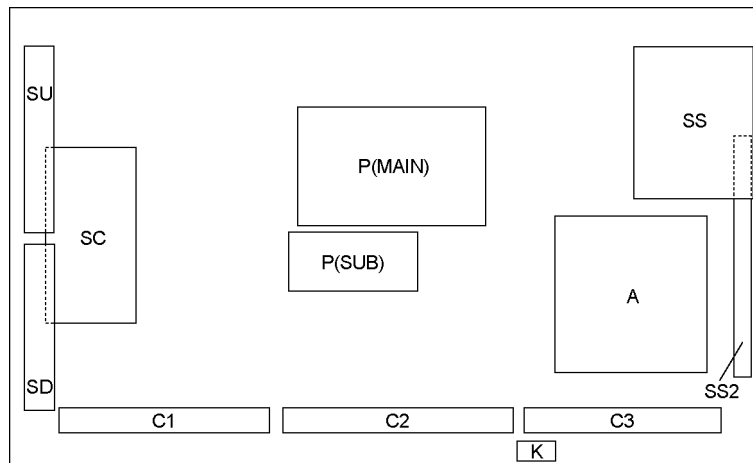
### Suggested Pb free solder

There are several kinds of Pb free solder available for purchase. This product uses Sn+Ag+Cu (tin, silver, copper) solder. However, Sn+Cu (tin, copper), Sn+Zn+Bi (tin, zinc, bismuth) solder can also be used.

0.3mm X 100g	0.6mm X 100g	1.0mm X 100g
		

## 3 Service Navigation

### 3.1. PCB Layout



Board Name	Function
P(MAIN)	Power Supply Non serviceable. P(MAIN)-Board should be exchanged for service.
P(SUB)	Power Supply Non serviceable. P(SUB)-Board should be exchanged for service.
A	Main AV input, processing
K	Remote receiver, Power LED, C.A.T.S sensor
C1	Data Driver (Lower Right)
C2	Data Driver (Lower Center)
C3	Data Driver (Lower Left)
SC	Scan Drive
SS	Sustain Drive
SS2	Sustain out (Lower)
SU	Scan out (Upper) Non serviceable. SU-Board should be exchanged for service.
SD	Scan out (Lower) Non serviceable. SD-Board should be exchanged for service.

# 4 Specifications

## ■ TV

<b>Power source</b>	AC 220-240 V, 50 / 60 Hz
<b>Power</b>	
<b>Rating</b>	550 W
<b>Home mode</b> (based on IEC 62087 Ed.2 measurement method)	230 W
<b>Standby power consumption</b>	0.3 W
<b>Visible screen size (diagonal)</b>	165 cm
<b>Display resolution</b>	1,920 (W) × 1,080 (H)
<b>Panel</b>	Plasma Display
<b>Dimensions (W × H*1 × D)</b>	1,531 mm × 975 mm × 323 mm (With Pedestal) 1,531 mm × 887 mm × 51 mm (TV only)
<b>Mass</b>	50.5 kg Net (With Pedestal) 42.0 kg Net (TV only)
<b>Connection terminals</b>	
<b>AV IN (COMPONENT / VIDEO)</b>	
<b>VIDEO</b>	RCA PIN Type × 1                      1.0 V [p-p] (75 Ω)
<b>AUDIO L - R</b>	RCA PIN Type × 2                      0.5 V [rms]
<b>Y</b>	1.0 V [p-p] (including synchronization)
<b>P<sub>B</sub>/C<sub>B</sub>, P<sub>R</sub>/C<sub>R</sub></b>	± 0.35 V [p-p]
<b>HDMI 1 / 2 / 3 input</b>	TYPE A Connectors HDMI 1 / 3 : 3D, Content Type, Deep Colour, x.v.Colour™ HDMI 2 : 3D, Content Type, Audio Return Channel, Deep Colour, x.v.Colour™ • This TV supports "HDAVI control 5" function.
<b>Card slot</b>	SD Card slot × 1
<b>ETHERNET</b>	10BASE-T / 100BASE-TX
<b>USB 1 / 2 / 3</b>	USB1 / 2: USB2.0 DC 5 V, Max. 500 mA USB3: USB3.0 DC 5 V, Max. 900 mA
<b>DIGITAL AUDIO OUT</b>	PCM / Dolby Digital / DTS, Fibre optic
<b>Sound</b>	
<b>Speaker</b>	Front Speaker × 2, Woofer ( φ 75 mm) × 1
<b>Audio output</b>	20 W (5 W + 5 W + 10 W)

## Receiving systems / Band name

17 Systems	Function	17 Systems	Function
1 PAL B, G, H	Reception of broadcast transmissions and Playback from Video Cassette Tape Recorders	8 NTSC 4.43/5.5 MHz	Playback from Special VCR's or DVD
2 PAL I		9 NTSC 4.43/6.0 MHz	
3 PAL D, K		10 NTSC 4.43/6.5 MHz	
4 SECAM B, G		11 NTSC 3.58/5.5 MHz	
5 SECAM D, K		12 NTSC 3.58/6.0 MHz	
6 SECAM K1		13 NTSC 3.58/6.5 MHz	
7 NTSC M (NTSC 3.58/4.5 MHz)		14 SECAM I	
		15 PAL 60 Hz/5.5 MHz	Playback from Special Disc Players and Special VCR's or DVD
		16 PAL 60 Hz/6.0 MHz	
		17 PAL 60 Hz/6.5 MHz	

GB20600-2006 Mode-C=3780 8 MHz UHF (Hong Kong) free-to-air TV Broadcast reception

## Receiving Channels (Analogue TV)

### VHF BAND

2-12 (PAL/SECAM B, K1)	0-12 (PAL B AUST.)
1-9 (PAL B N.Z.)	1-12 (PAL/SECAM D)
1-12 (NTSC M Japan)	2-13 (NTSC M USA)

### UHF BAND

21-69 (PAL G, H, I/SECAM G, K, K1)	
28-69 (PAL B AUST.)	13-57 (PAL D, K)
13-62 (NTSC M Japan)	14-69 (NTSC M USA)

### CATV

S1-S20 (OSCAR)	1-125 (USA CATV)
C13-C49 (JAPAN)	S21-S41 (HYPER)
Z1-Z37 (CHINA)	5A, 9A (AUST.)

VHF / UHF

## Aerial input

## Operating Conditions

<b>Temperature:</b>	0 °C - 40 °C
<b>Humidity:</b>	20 % - 80 % RH (non-condensing)

## Built-in Camera

<b>Lens:</b>	F2.0 Lens; FOV (D) 50.9° (in HD mode)
<b>Focus:</b>	Fixed focus
<b>Resolution:</b>	1,280 × 720

## Built-in wireless LAN

### Standard compliance and Frequency range\*2

IEEE 802.11a/n

5.15 GHz - 5.35 GHz, 5.47 GHz - 5.85 GHz

IEEE 802.11b/g/n

2.40 GHz - 2.4835 GHz

WPA2-PSK (TKIP/AES) WPA-PSK (TKIP/AES) WEP (64 bit/128 bit)

### Security

## Bluetooth wireless technology\*3

### Standard Compliance

Bluetooth 3.0

### Frequency Range

2.402 GHz - 2.480 GHz

\*1: With Camera pop-up: +23 mm height

\*2: The frequency and channel differ depending on the country.

\*3: Not all the Bluetooth compatible devices are available with this TV. Up to 5 devices can be used simultaneously (except the 3D Eyewear and VIERA Touch Pad Controller).

## ■ 3D Eyewear

### Dimensions (W × H × D)

164.7 mm × 41.0 mm × 170.7 mm

### Mass

Approx. 34 g

### Lens type

Liquid Crystal Shutter

### Usage temperature range

0 °C - 40 °C

### Battery

Coin-shaped lithium battery CR2025

Operation time: Approx. 75 hours in continuous use of the battery made by Panasonic

### Materials

Main body: Resin

Lens section: Liquid crystal glass

## ■ Electronic Touch Pen

### Dimensions

Length: 186.7 mm

Diameter: 18.2 mm

### Mass

Approx. 30 g (excluding battery)

### Usage temperature range

0 °C - 40 °C

### Battery

Panasonic R03 battery

Operation time : approx. 8 hours

Panasonic LR03 battery

Operation time: approx. 30 hours

### Materials

Main body: Resin

## Note

- 3D Eyewear, Electronic Touch Pen and VIERA Touch Pad Controller use Bluetooth wireless technology.
- Design and Specifications are subject to change without notice. Mass and Dimensions shown are approximate.
- For the information of the open source software, refer to [eHELP] (Support > Licence).
- TH-P65VT60H complies with China Terrestrial Television National Standard (GB20600-2006) Mode-C=3780



## 5 Technical Descriptions

### 5.1. Specification of KEY for DTCP-IP, One-to-One, Widevine and Netflix

#### 5.1.1. General information:

1. NAND Flash (IC8900) for spare parts has the seed of KEY for each.
2. The final KEY data will be generated by Main IC (IC8000) when SELF CHECK was done and are stored in both Main IC (IC8000) and NAND Flash (IC8900).

Four KEY are not generated for all models.

The necessary KEY are only generated and stored depend on the feature of models.

#### 5.1.2. Replacement of ICs:

When Main IC (IC8000) is replaced, NAND Flash (IC8900) should be also replaced with new one the same time.

When NAND Flash (IC8900) is replaced, Main IC (IC8000) is not necessary to be replaced the same time.

After the replacement of IC, SELF CHECK should be done to generate the final KEY data.

How to SELF CHECK: While pressing [VOLUME ( - )] button on the main unit, press [MENU] button on the remote control for more than 3 seconds.

TV will be forced to the factory shipment setting after this SELF CHECK.

#### 5.1.3. Model and Keys:

Model No.	Keys			
	One-to-One (For USB Rec.)	DTCP-IP	WIDEVINE	Netflix
TH-P65VT60H	Yes	None	Yes	None

### 5.2. USB HDD Recording

#### 5.2.1. General information:

Digital TV programmes can be recorded in USB HDD.

A One-to-One key generated in A-board by SELF CHECK binds TV and USB-HDD for communication.

That key is only one key for them. If the key is difference, TV can not access USB-HDD.

#### Caution:

**New key will be generated by following SELF CHECK and previous TV programmes recorded in USB HDD will not be viewed.**

**SELF CHECK: While pressing [VOLUME ( - )] button on the main unit, press [MENU] button on the remote control for more than 3 seconds.**

### 5.3. Panel-Type setting

Panel-Type setting is required after exchange the A-board.

A-board for spare parts is common use for different inch size in same series.

Go into Service Mode and confirm/select Panel-Type in OPTION to correct inch size.

# 6 Service Mode

## 6.1. How to enter into Service Mode

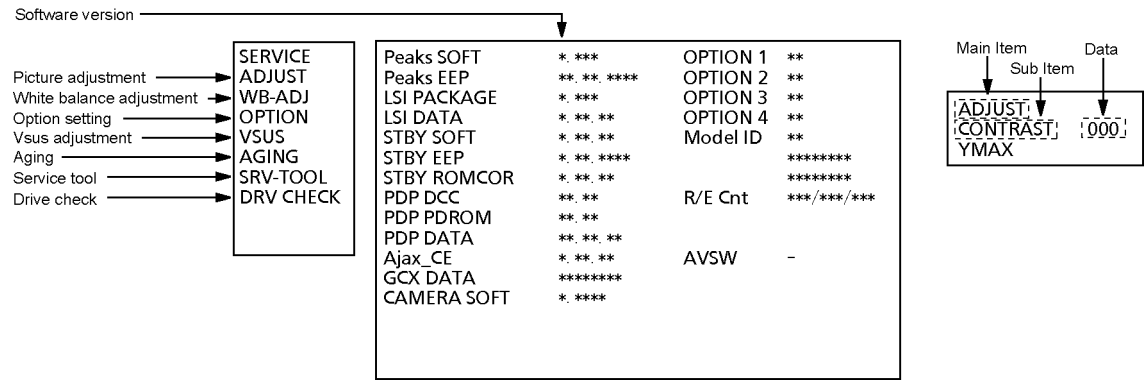
### 6.1.1. Purpose

After exchange parts, check and adjust the contents of adjustment mode.

While pressing [VOLUME ( - )] button of the main unit, press [ i ] button of the remote control three times within 2 seconds.

**Note:**

Service Mode can not be entered when 3D signal input.  
Input 2D signal to enter Service Mode.



### 6.1.2. Key command

- [1] button...Main items Selection in forward direction
- [2] button...Main items Selection in reverse direction
- [3] button...Sub items Selection in forward direction
- [4] button...Sub items Selection in reverse direction
- [VOL] button...Value of sub items change in forward direction ( + ), in reverse direction ( - )

### 6.1.3. How to exit

Switch off the power with the [POWER] button on the main unit or the [POWER] button on the remote control.

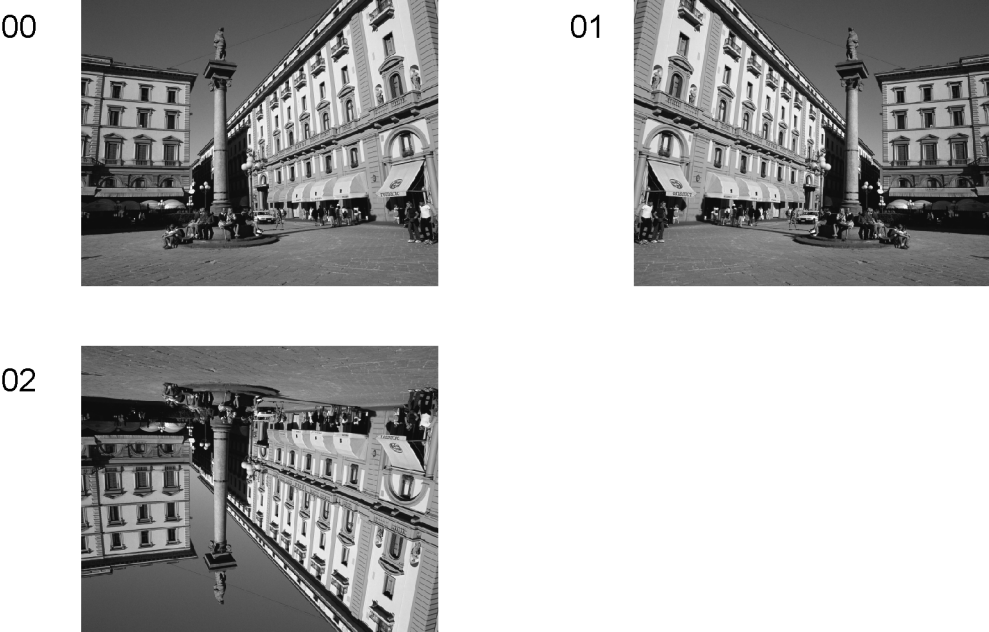
#### 6.1.4. Contents of adjustment mode

- Value is shown as a hexadecimal number.
- Preset value differs depending on models.
- After entering the adjustment mode, take note of the value in each item before starting adjustment.

Main item	Sub item	Sample Data	Remark
ADJUST	CONTRAST	000	
	COLOR	36	
	TINT	00	
	SUB-BRT	800	
	H-POS	0	
	H-AMP	0	
	V-POS	0	
	V-AMP	0	
WB-ADJ	R-CUT	80	
	G-CUT	80	
	B-CUT	80	
	R-DRV	FF	
	G-DRV	F0	
	B-DRV	C0	
	ALL-CUT	80	
	ALL-DRV	FF	
OPTION	Panel-Type	65FHD	Factory Preset
	Boot	ROM	
	STBY-SET	00	
	EMERGENCY	ON	
	CLK MODE	00	
	CLOCK	000	
	Y/C Delay		
	OPT 1	00110000	
	OPT 2	11100110	
	OPT 3	00001001	
	OPT 4	00000110	
	EDID-CLK	HIGH	
	MIRROR	00 (See Option-Mirror)	
	AMR-SELECT	OFF	
VSUS		LOW	See Vsus selection
AGING	ALL WHITE		Built-in test patterns can be displayed.
	MIDDLE BLUE WITH MAGENTA OUTSIDE FRAME		
	MIDDLE STEP GREEN		
	MIDDLE STEP RED		
	LOW STEP WHITE		
	ALL BLUE		
	ALL GREEN		
	ALL RED		
	WHITE DIAGONAL STRIPE		
	RED DIAGONAL STRIPE		
	GREEN DIAGONAL STRIPE		
	BLUE DIAGONAL STRIPE		
	A-ZONE & B-ZONE		
	1% WINDOW		
	COLOR BAR		
	9 POINTS BRIGHT MEASURE		
	2 DOT OUTSIDE FRAME		
	DOUBLE FIXED 1% WINDOW		
	VERTICAL LINE SCROLL		
	ON/OFF		
	R/G/B/W ROTATION WITH COUNT DISPLAY		
	HALF FIXED ALL WHITE		
	ALL WHITE WITH COUNT DISPLAY		
SRV-TOOL		00	See Service tool mode
DRV CHECK	USBHDD CHECK	00	See DRV Check-USBHDD Check

6.2. Option - Mirror

Picture can be reversed left and right or up and down.  
00 : Default (Normal picture is displayed)  
01 : Picture is reversed left and right.  
02 : Picture is reversed up and down.



Hint : If the defective symptom (e.g. Vertical bar or Horizontal bar) is moved by selection of this mirror, the possible cause is in A-board.

6.3. Service tool mode

6.3.1. How to access

- 1. Select [SRV-TOOL] in Service Mode.
- 2. Press [OK] button on the remote control.

SRV-TOOL		
Display of TD2Microcode version →	TD2Microcode:00000000	
Display of Flash ROM maker code →	Flash ROM : 2C - DC	
Display of SOS History →	PTCT : 00 . 00 . 00 . 00 . 00 .	Time 00000:40    Count 0000001

POWER ON TIME/COUNT  
Press [MUTE] button (3 sec)

6.3.2. Display of SOS History

SOS History (Number of LED blinking) indication.  
From left side; Last SOS, before Last, three occurrence before, 2nd occurrence after shipment, 1st occurrence after shipment.  
This indication except 2nd and 1st occurrence after shipment will be cleared by [Self-check indication and forced to factory shipment setting].

6.3.3. POWER ON Time, On/Off

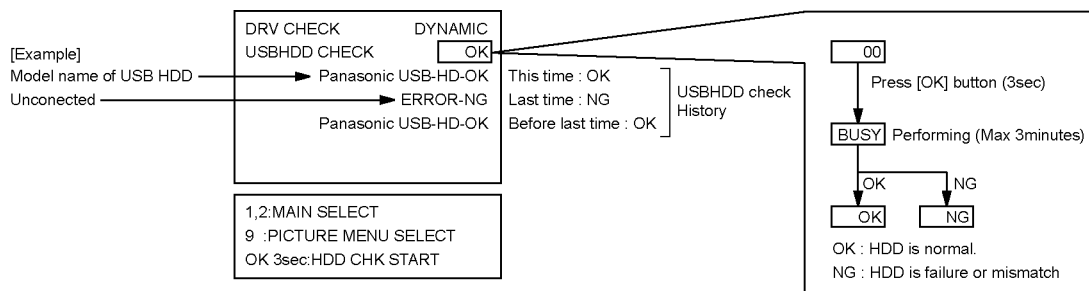
Note : To display TIME/COUNT menu, highlight position, then press MUTE for 3 sec.  
Time : Cumulative power on time, indicated hour : minute by decimal  
Count : Number of ON times by decimal  
Note : This indication will not be cleared by either of the self-checks or any other command.

6.3.4. Exit

Disconnect the AC cord from wall outlet or switch off the power with [ Power ] button on the main unit.

## 6.4. DRV Check - USBHDD Check

1. Select [DRV Check - USBHDD Check] in Service Mode.
2. Press [OK] button on the remote control for more than 3 seconds.



## 6.5. Hotel mode

1. Purpose  
Restrict a function for hotels.
2. Access command to the Hotel mode setup menu  
In order to display the Hotel mode setup menu:  
While pressing [VOLUME (-)] button of the main unit,  
press [AV] button of the remote control three times within  
2 seconds.

Then, the Hotel mode setup menu is displayed.

Hotel Mode	
Hotel Mode	Off
Initial INPUT	Off
Initial POS	Off
Initial VOL Level	Off
Maximum VOL Level	100
Button Lock	Off
Remote Lock	Off
Private Information	Keep

Change RETURN

3. To exit the Hotel mode setup menu  
Switch off the power with the [POWER] button on the main unit or the [POWER] button on the remote control.
4. Explain the Hotel mode setup menu

Item	Function
Hotel Mode	Select hotel mode On/Off
Initial INPUT	Select input signal modes. Set the input, when each time power is switched on. Selection : Off, Analogue TV, Digital TV, AV, HDMI1, HDMI2, HDMI3 • Off: give priority to a last memory.
Initial POS	Select programme number. Selection : Off/0 to 99 • Off: give priority to a last memory
Initial VOL Level	Adjust the volume when each time power is switched on. Selection/Range : Off/0 to 100 • Off: give priority to a last memory
Maximum VOL Level	Adjust maximum volume. Range : 0 to 100
Button Lock	Select local key conditions. Selection : Off/SETUP/MENU • Off: altogether valid • SETUP: only F-key is invalid (Tuning guide (menu) can not be selected.) • MENU: only F-key is invalid (only Volume/Mute can be selected.)
Remote Lock	Select remote control key conditions. Selection : Off/SETUP/MENU • Off: altogether valid • SETUP: only Setup menu is invalid • MENU: Picture/Sound/Setup menu are invalid
Private Information	Select private information for VIERA Cast is Keep or Reset if Hotel mode is set to [On] when TV power on. Selection : Keep/Reset • Keep: private information for VIERA Cast is keep • Reset: private information for VIERA Cast is reset

## 6.6. Data Copy by USB Memory

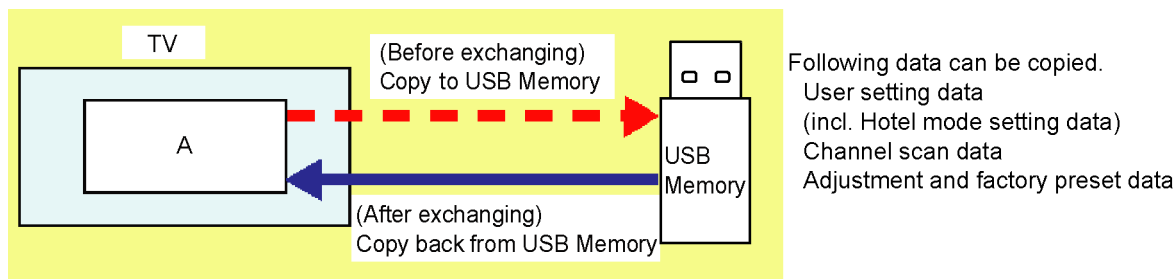
### Note:

SD card can not be used for Data Copy.

### 6.6.1. Purpose

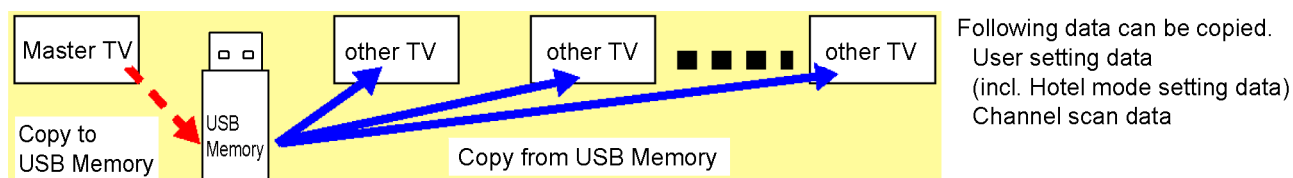
#### (a) Board replacement (Copy the data when exchanging A-board):

When exchanging A-board, the data in original A-board can be copied to USB Memory and then copy to new A-board.



#### (b) Hotel (Copy the data when installing a number of units in hotel or any facility):

When installing a number of units in hotel or any facility, the data in master TV can be copied to USB Memory and then copy to other TVs.



### 6.6.2. Preparation

Make pwd file as startup file for (a) or (b) in a empty USB Memory.

1. Insert a empty USB Memory to your PC.
2. Right-click a blank area in a USB Memory window, point to New, and then click text document. A new file is created by default (New Text Document.txt).
3. Right-click the new text document that you just created and select rename, and then change the name and extension of the file to the following file name for (a) or (b) and press ENTER.

### File name:

(a) For Board replacement : boardreplace.pwd

(b) For Hotel : hotel.pwd

### Note:

Please make only one file to prevent the operation error.

No any other file should not be in USB Memory.

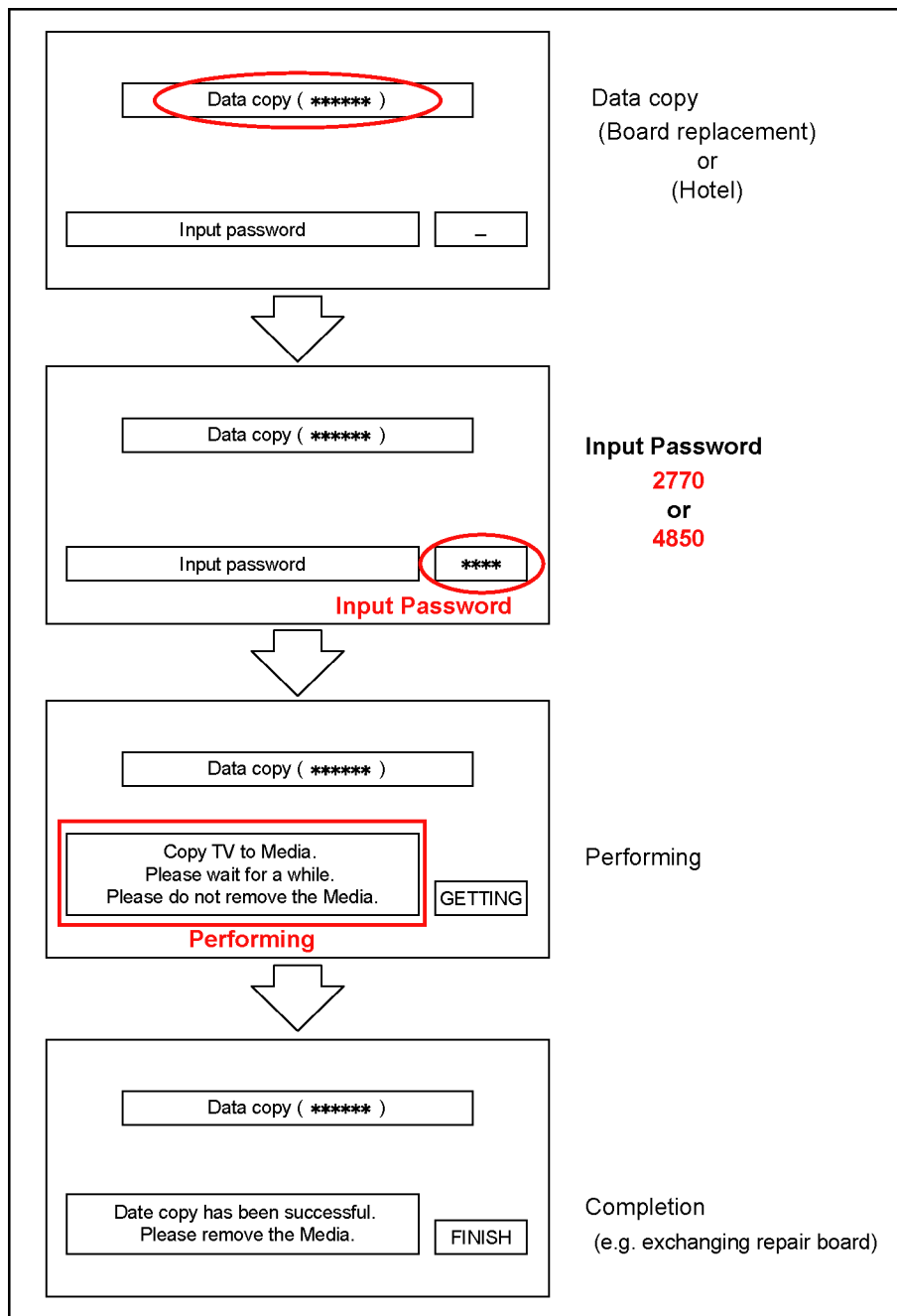
### 6.6.3. Data copy from TV set to USB Memory

1. Turn on the TV set.
2. Insert USB Memory with a startup file (pwd file) to USB terminal.  
On-screen Display will be appeared according to the startup file automatically.
3. Input a following password for (a) or (b) by using remote control.  
(a) For Board replacement : 2770  
(b) For Hotel : 4850  
Data will be copied from TV set to USB Memory.  
It takes around 2 to 6 minutes maximum for copying.
4. After the completion of copying to USB Memory, remove USB Memory from TV set.
5. Turn off the TV set.

**Note:**

Following new folder will be created in USB Memory for data from TV set.

- (a) For Board replacement : user\_setup
- (b) For Hotel : hotel

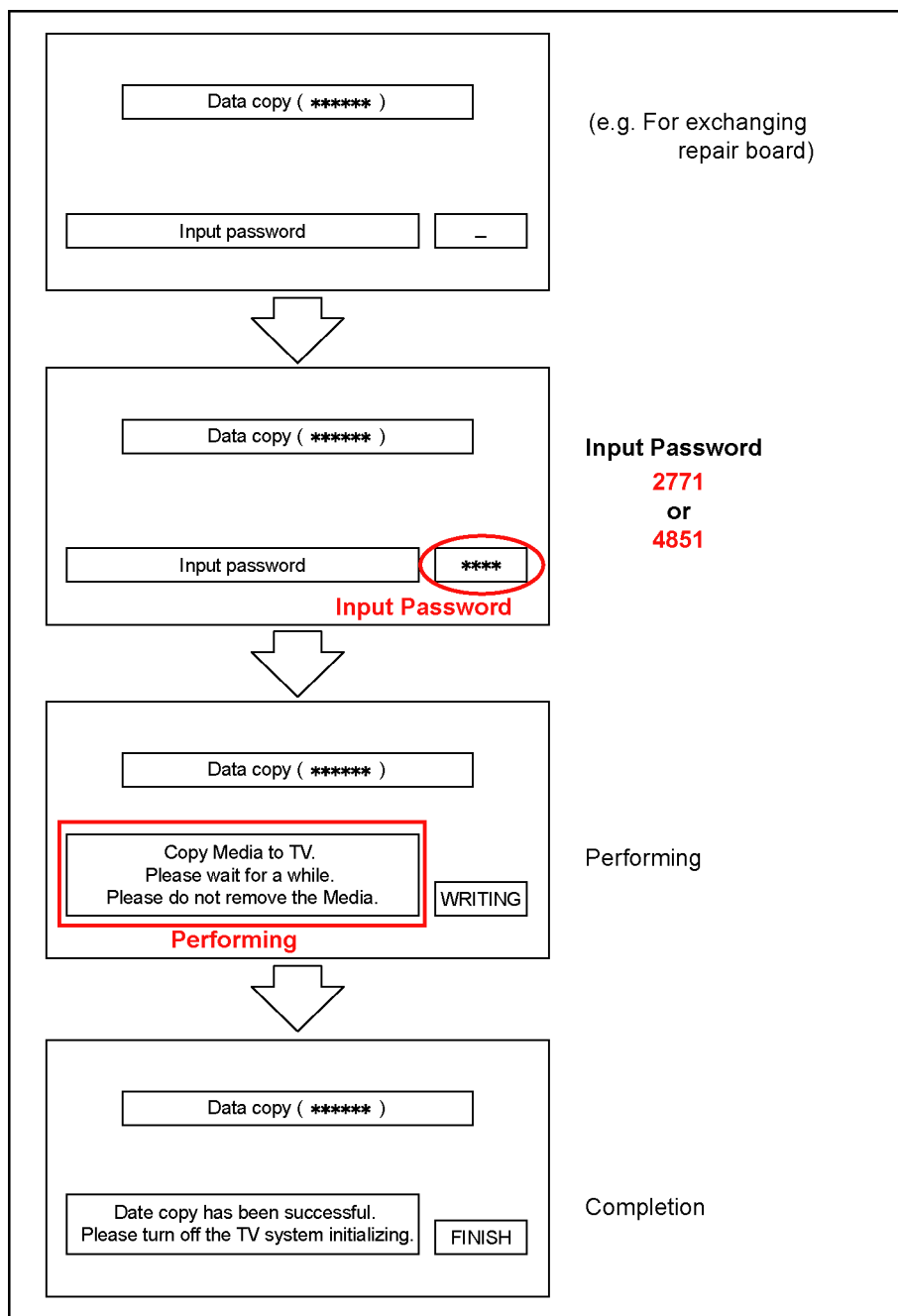


#### 6.6.4. Data copy from USB Memory to TV set

1. Turn on the TV set.
2. Insert USB Memory with Data to USB terminal.  
On-screen Display will be appeared according to the Data folder automatically.
3. Input a following password for (a) or (b) by using remote control.  
(a) For Board replacement : 2771  
(b) For Hotel : 4851  
Data will be copied from USB Memory to TV set.
4. After the completion of copying to USB Memory, remove USB Memory from TV set.  
(a) For Board replacement : Data will be deleted after copying (Limited one copy).  
(b) For Hotel : Data will not be deleted and can be used for other TVs.
5. Turn off the TV set.

**Note:**

1. Depending on the failure of boards, function of Data copy for board replacement does not work.
2. This function can be effective among the same model numbers.





## 7 Troubleshooting Guide

Use the self-check function to test the unit.

1. Checking the IIC bus lines
2. Power LED Blinking timing

### 7.1. Check of the IIC bus lines

#### 7.1.1. How to access

##### 7.1.1.1. Self-check indication only:

Produce TV reception screen, and while pressing [VOLUME ( - )] button on the main unit, press [OK] button on the remote control for more than 3 seconds.

##### 7.1.1.2. Self-check indication and forced to factory shipment setting:

**Caution:**

**New key will be generated and previous TV programmes recorded in USB HDD will not be viewed. (See USB HDD Recording)**

Produce TV reception screen, and while pressing [VOLUME ( - )] button on the main unit, press [MENU] button on the remote control for more than 3 seconds.

#### 7.1.2. Screen display

65FHD SET		SELF CHECK COMPLETE SYS SELECT : HK/UK	
H14TUN	OK	PEAKS-SOFT	*****
H90STBY	OK	PEAKS-EEP	*****
H91MEM2	OK	LSI-PACKAGE	*****
H38PANEL	OK	LSI-RELEASE	*****
H38PD6	OK	STBY-SOFT	*****
H07TEMP	OK	STBY-EEP	*****
H17LAN	OK	PDP-DCC	*****
H00FE	OK	PDP-PDROM	*****
H96ID	OK	PDP-DATA	*****
H97ID2	OK	GCX DATA	*****
H45BT	OK	CAMERA	*****
H42WiFi	OK		
H03FAN	OK		
H21DSP	OK		
H52CAMERA	OK		
		MODEL ID	*****

#### 7.1.3. Check Point

Confirm the following parts if NG was displayed.

DISPLAY	Check Ref. No.	Description	Check Point
H14TUN	TU6705	TUNER	A-BOARD
H90STBY	IC8000	PEAKS-PRO4 (STM)	A-BOARD
H91MEM2	IC8900	NAND FLASH	A-BOARD
H38PANEL		PLASMA PANEL	A-BOARD/PLASMA PANEL
H38PD6	IC9300	PD6H	A-BOARD
H07TEMP	IC2001	TEMP SENSOR	A-BOARD
H17LAN	IC8650	ETHERPHY	A-BOARD
H00FE	IC6800	FRONT END	A-BOARD
H96ID		ID	A-BOARD
H97ID2		ID2	A-BOARD
H45BT		BLUETOOTH	A-BOARD/BLUETOOTH
H42WiFi		WiFi	A-BOARD/WiFi
H03FAN		FAN	A-BOARD/FAN
H21DSP	IC4900	AUDIO AMP	A-BOARD
H52CAMERA		CAMERA	A-BOARD/CAMERA

#### 7.1.4. Exit

Disconnect the AC cord from wall outlet or press the [POWER] button on the main unit for 3 seconds to turn off and then turn on automatically.

## 7.2. Power LED Blinking timing chart

### 1. Subject

Information of LED Flashing timing chart.

### 2. Contents

When an abnormality has occurred the unit, the protection circuit operates and reset to the stand by mode. At this time, the defective block can be identified by the number of blinks of the Power LED on the front panel of the unit.

Blinking Times	Contents	Check point
1	Panel information SOS PD Start SOS	-
2	P15V SOS	A-Board P-Board
6	Driver SOS1 (SC Energy recovery circuit) (A-SC FPC DET)	SC-Board A-SC FPC
7	Driver SOS2 (SU/SD Connector DET) (SU/SD Scan and Logic IC)	SU-Board SD-Board *
8	Driver SOS3 (SS FPC DET) (SS Energy recovery circuit)	SS-Board SS2-Board SS FPC SS2 FPC
9	Discharge Control SOS	A-Board
10	Sub 3.3V SOS Tuner power SOS	A-Board SC-Board SS-Board P-Board
11	Fan SOS	A-Board
12	Sound SOS	A-Board Speaker Woofers
13	Emergency SOS	A-Board

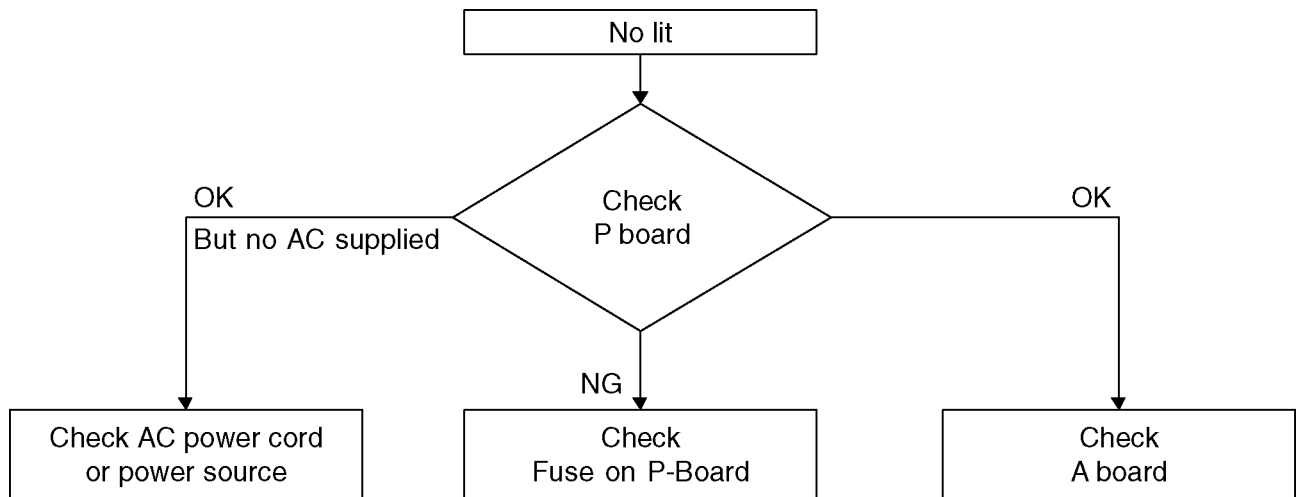
\* Use SC jig to isolate the board.

## 7.3. No Power

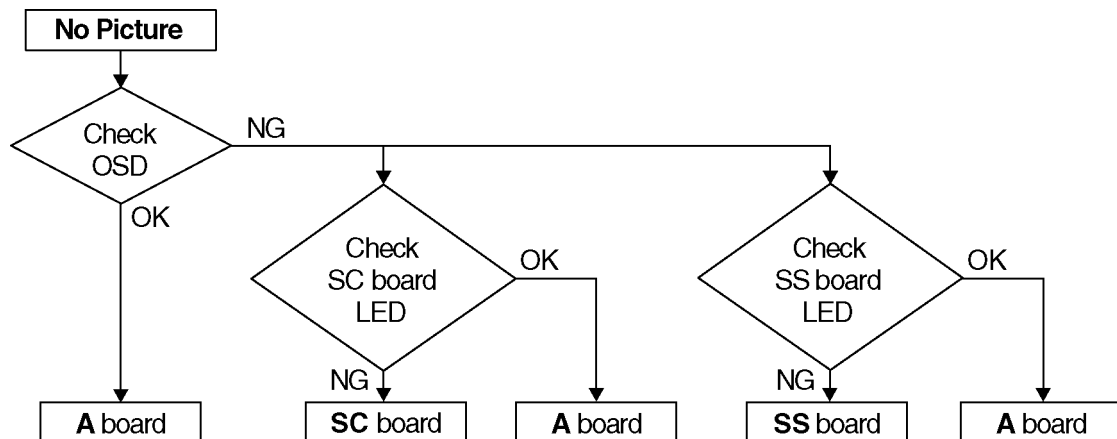
### First check point

There are following 3 states of No Power indication by power LED.

1. No lit
2. Green is lit then turns red blinking a few seconds later. (See Power LED Blinking timing chart)
3. Only red is lit.



## 7.4. No Picture



### 7.4.1. Drive circuits LED indicator

Check that the following LEDs on the SC and SS-Board.

Power recovery LED

	LED for check
SC	D16583
SS	D16254A

7.5. Local screen failure

Plasma display may have local area failure on the screen. Fig-1 is the possible defect P.C.B. for each local area.

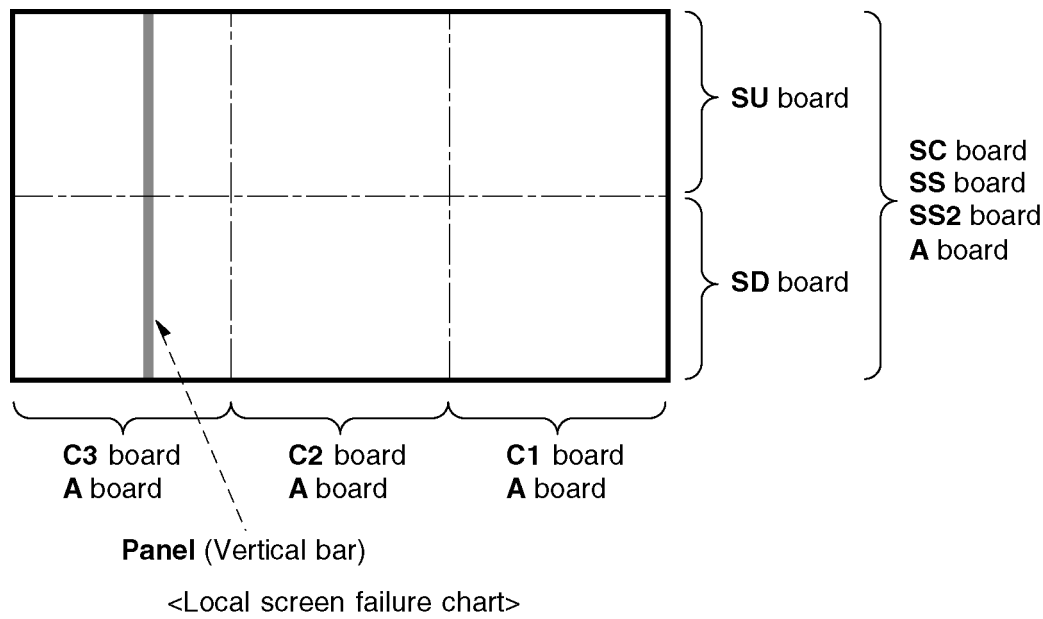


Fig-1

## 8 Service Fixture & Tools

### 8.1. SC jig

**Purpose:**

To find the failure board (SC or SU/SD) when the power LED is blinking 7 times.

**SC jig:**

Jumper connector to connect to SC50 connector on SC board

**Part number:**

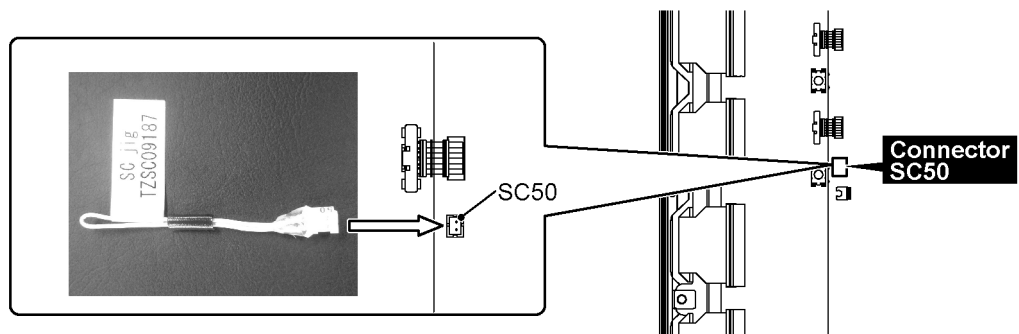
TZSC09187

**How to use:**

**Caution: Remove SC jig from SC board after inspection.**

1. Remove the 3 VFG screws from SU and SD board.
2. Remove all connector between SC board and SU/SD board to isolate SC board from both SU and SD board electrically.  
Note: The board will be damaged if all connector is not removed (for example; remove connector only for SU board and stay connecting with SD board. The board will be damaged.)
3. Connect SC jig to connector SC50 at left bottom side of SC board
4. Turn on the TV/Display Unit and confirm the power LED blinking.  
LED blinking: Possible cause of failure is in SC board  
No LED blinking (Lighting or no lighting): Possible cause of failure is in SU or SD board
5. After inspection, turn off the TV/Display Unit and wait a few minutes to discharge.
6. Remove SC jig from SC board.

Remark: This SC jig can be used for all 2013 Plasma TV and Plasma Display.

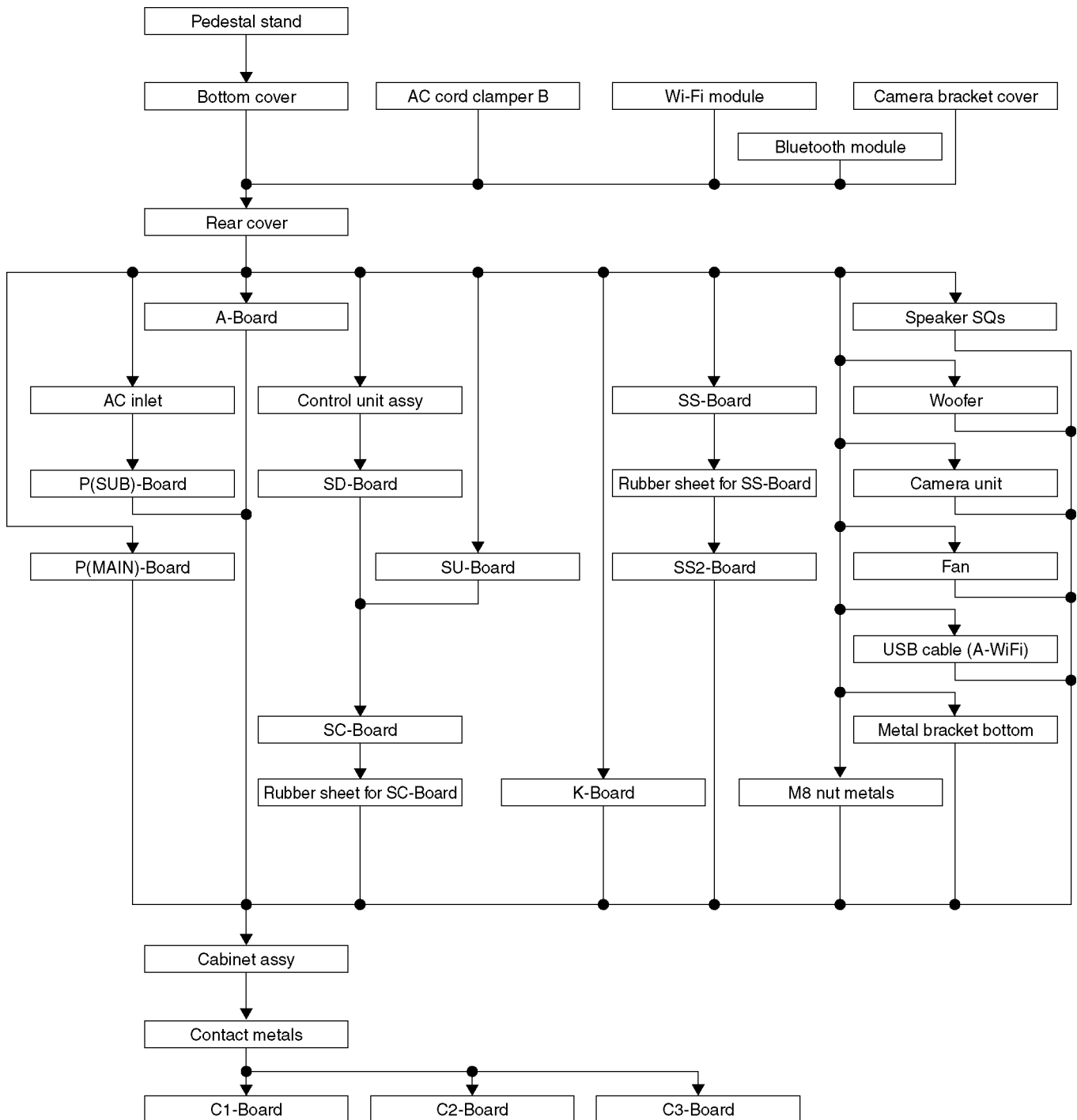


## 9 Disassembly and Assembly Instructions

### 9.1. Disassembly Flow Chart for the Unit

This is a disassembly chart.

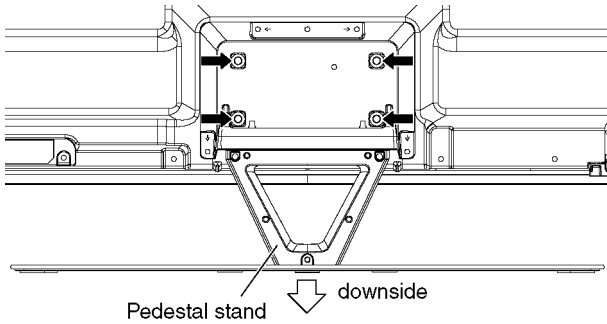
When assembling, perform this chart conversely.



## 9.2. Disassembly Procedure for the Unit

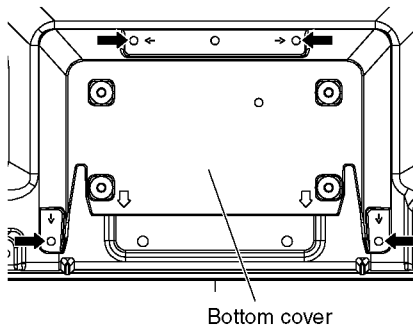
### 9.2.1. Remove the Pedestal stand

1. Remove the Plasma panel section from the servicing stand and lay on a flat surface such as a table (covered by a soft cloth) with the Plasma panel surface facing downward.
2. Remove the screws (×4 ➡) and
3. Slide the Pedestal stand to the downside and remove the Pedestal stand.



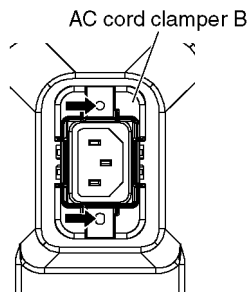
### 9.2.2. Remove the Bottom cover

1. Remove the screws (×4 ➡) and remove the Bottom cover.



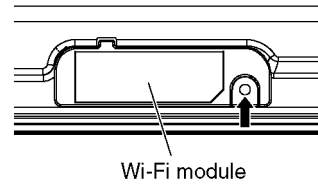
### 9.2.3. Remove the AC cord clamber B

1. Remove the screws (×2 ➡) and remove the AC cord clamber B.



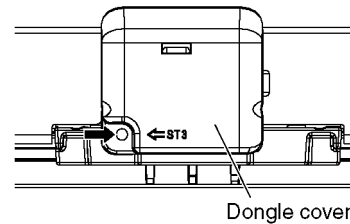
### 9.2.4. Remove the Wi-Fi module

1. Remove the screw (×1 ➡) and remove the Wi-Fi module.

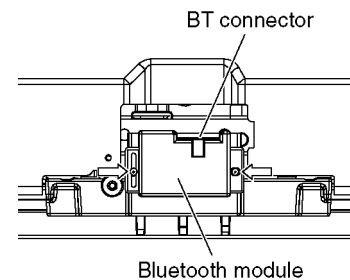


### 9.2.5. Remove the Bluetooth module

1. Remove the screw (×1 ➡) and remove the Dongle cover.

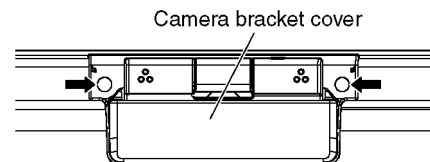


2. Remove the Pin guides (×2 ⇄) and disconnect the BT connector.
3. Remove the Bluetooth module.



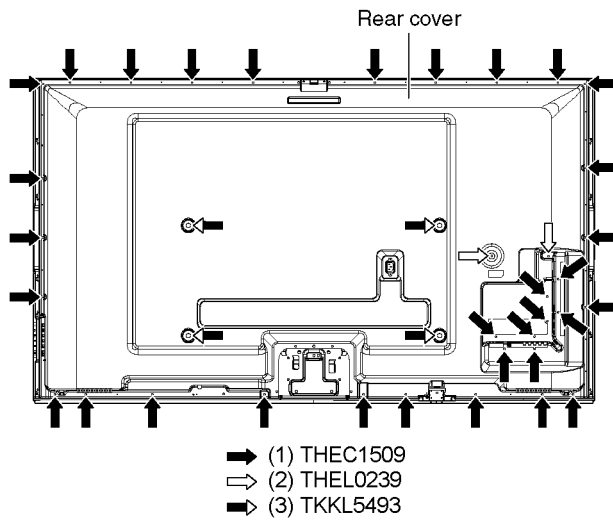
### 9.2.6. Remove the Camera bracket cover

1. Remove the screws (×2 ➡) and remove the Camera bracket cover.



### 9.2.7. Remove the Rear cover

1. Remove the screws (×33 ➡, ×2 ⇨).
2. Remove the M8 caps (×4 ➡).
3. Remove the Rear cover.

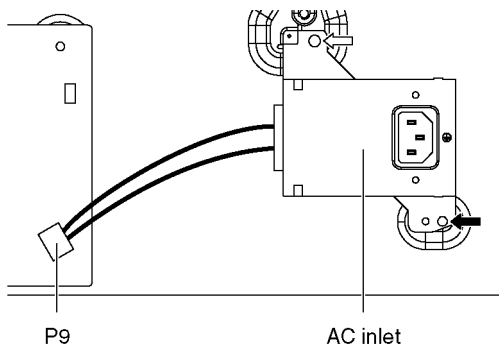


### 9.2.8. Remove the AC inlet

**Caution:**

To remove AC inlet wait 1 minute after power was off for discharge from electrolysis capacitors.

1. Disconnect the connector (P9).
2. Remove the screws (×1 ➡, ×1 ⇨) and remove the AC inlet.

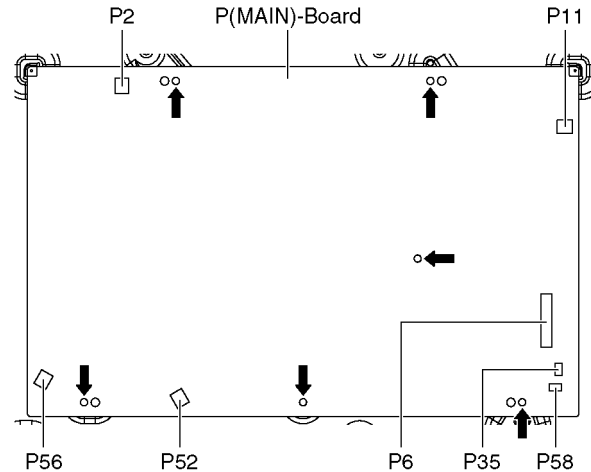


### 9.2.9. Remove the P(MAIN)-Board

**Caution:**

To remove P.C.B. wait 1 minute after power was off for discharge from electrolysis capacitors.

1. Unlock the cable clampers and the tapes to free the cables
2. Disconnect the connectors (P2, P6, P11, P35, P52, P56 and P58).
3. Remove the screws (×6 ➡) and remove the P(MAIN)-Board.

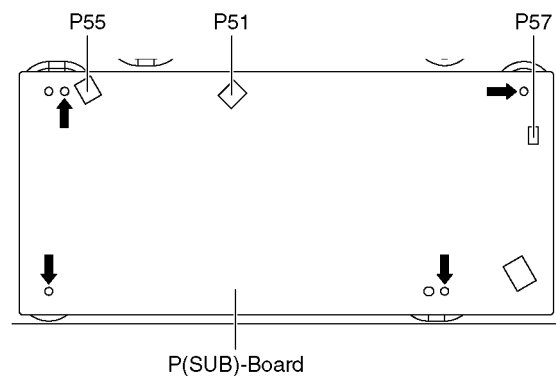


### 9.2.10. Remove the P(SUB)-Board

**Caution:**

To remove P.C.B. wait 1 minute after power was off for discharge from electrolysis capacitors.

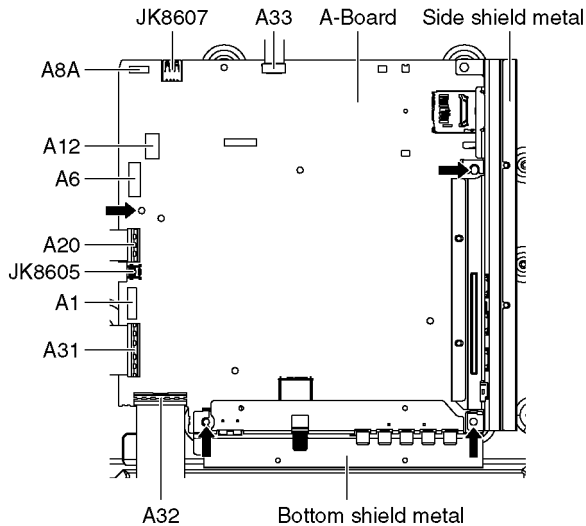
1. Unlock the cable clampers and the tapes to free the cables
2. Disconnect the connectors (P51, P55 and P57).
3. Remove the screws (×4 ➡) and remove the P(SUB)-Board.



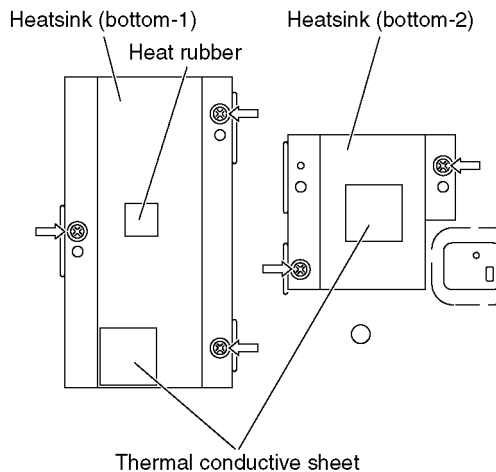


### 9.2.11. Remove the A-Board

1. Unlock the hooks and the tapes to free the cables.
2. Disconnect the connectors (A1, A6, A8A and A12).
3. Disconnect the USB cables (JK8605 and JK8607).
4. Disconnect the flexible cables (A20, A31, A32 and A33).
5. Remove the screws (×4 ➡).
6. Remove the Side shield metal and the Bottom shield metal.
7. Remove the A-Board.

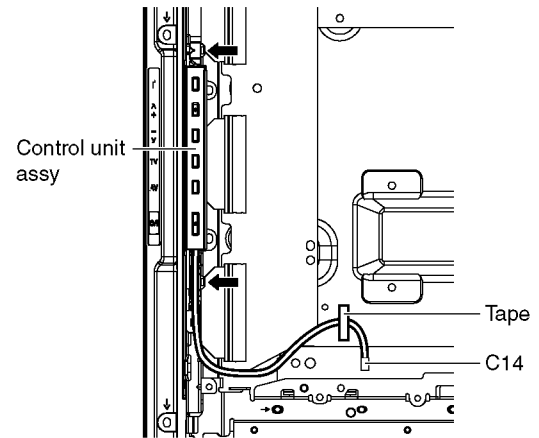


8. Remove the screws (×5 ⇨).
9. Remove the Heatsinks (bottom-1, -2), the Thermal conductive sheets and the Heat rubber.



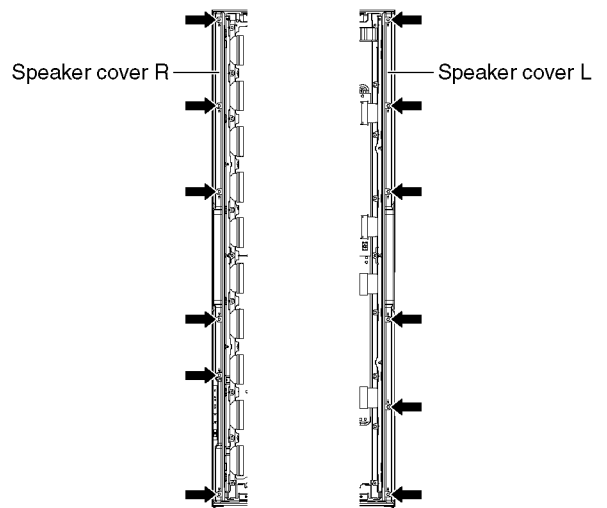
### 9.2.12. Remove the Control unit assy

1. Unlock the tape to free the cables.
2. Disconnect the connector (C14).
3. Remove the claws (×2 ➡) and remove the Control unit assy.

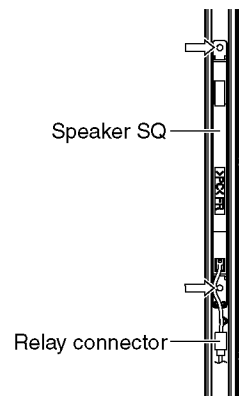


### 9.2.13. Remove the Speaker SQs

1. Unlock the hooks and the tapes to free the cables.
2. Remove the screws (×6 ➡ each) and remove the Speaker covers (L, R).

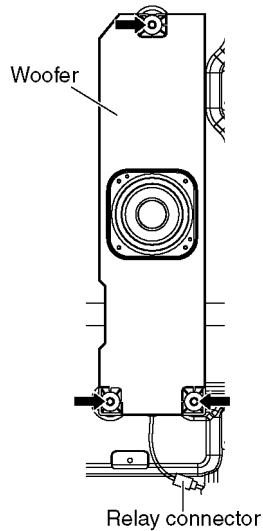


3. Disconnect the Relay connector.
4. Remove the screws (×2 ⇨ each) and remove the Speaker SQs (L, R).



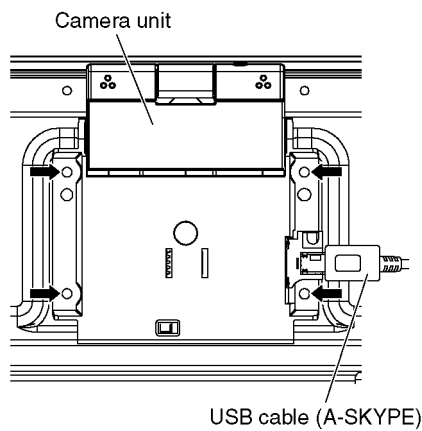
### 9.2.14. Remove the Woofer

1. Unlock the hooks and the tapes to free the cables.
2. Disconnect the Relay connector.
3. Remove the screws (×3 ➡) and remove the Woofer.



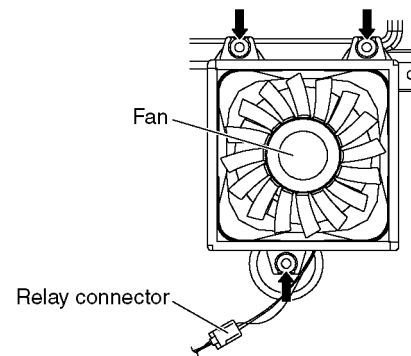
### 9.2.15. Remove the Camera unit

1. Unlock the hooks and the tapes to free the cables.
2. Disconnect the USB cable (A-SKYPE).
3. Remove the screws (×4 ➡) and remove the Camera unit.



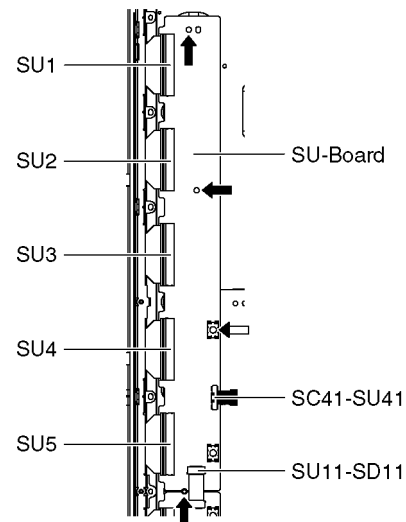
### 9.2.16. Remove the Fan

1. Unlock the hooks and the tapes to free the cables.
2. Remove the screws (×3 ➡ each).
3. Disconnect the Relay connector and remove the Fans.



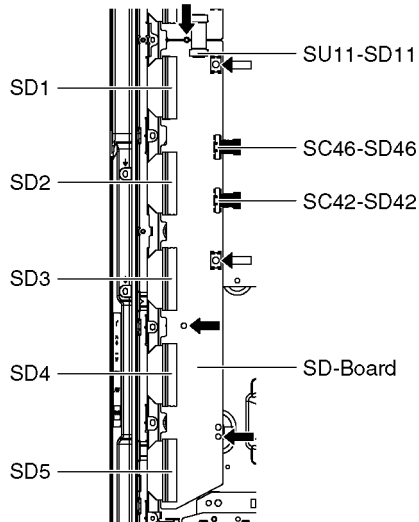
### 9.2.17. Remove the SU-Board

1. Disconnect the flexible cables (SU1, SU2, SU3, SU4 and SU5) connected to the SU-Board.
2. Disconnect the flexible cable (SU11-SD11) and the bridge connector (SC41-SU41).
3. Remove the screws (×3 ➡, ×1 ⇨) and remove the SU-Board.



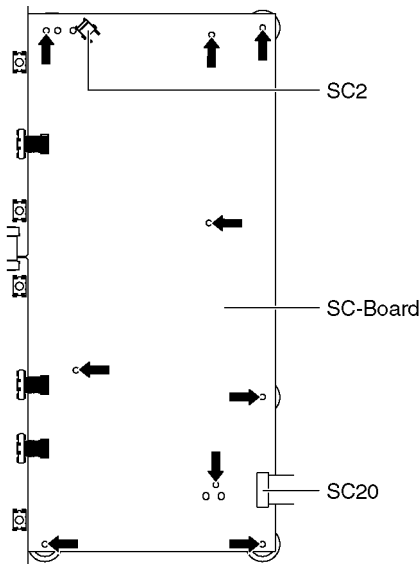
### 9.2.18. Remove the SD-Board

1. Disconnect the flexible cables (SD1, SD2, SD3, SD4 and SD5) connected to the SD-Board.
2. Disconnect the flexible cable (SU11-SD11) and the bridge connectors (SC42-SD42 and SC46-SD46).
3. Remove the screws (×3 ➡, ×2 ⇨) and remove the SD-Board.



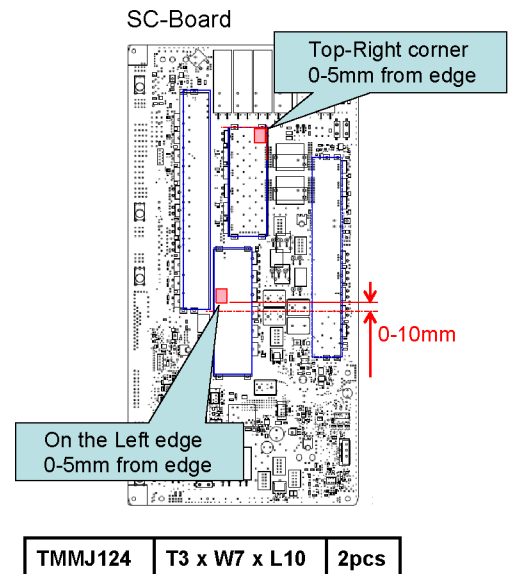
### 9.2.19. Remove the SC-Board

1. Unlock the tapes to free the cables.
2. Disconnect the connector (SC2).
3. Disconnect the flexible cable (SC20).
4. Remove the screws (×9 ➡) and remove the SC-Board.



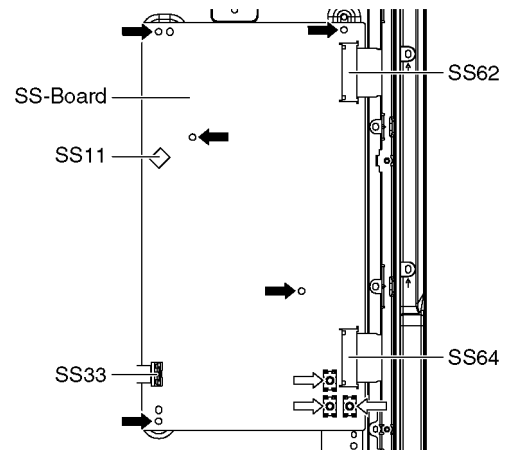
### 9.2.20. Work instructions for the Rubber sheet for SC-Board

1. Rubber sheets are put between the board and rear cover for EMC requirement and heat radiation. Confirm rubber sheets were placed at each portion when assembling as shown in figure.



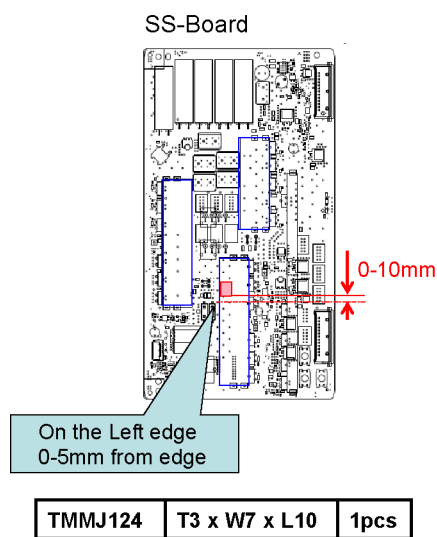
### 9.2.21. Remove the SS-Board

1. Disconnect the connector (SS11).
2. Disconnect the flexible cable (SS33).
3. Disconnect the flexible cables (SS62 and SS64).
4. Remove the screws (×5 ➡, ×3 ⇨) and remove the SS-Board.



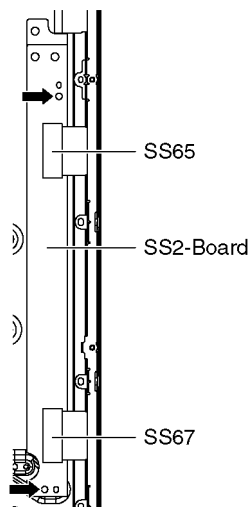
### 9.2.22. Work instructions for the Rubber sheet for SS-Board

1. Rubber sheets are put between the board and rear cover for EMC requirement and heat radiation. Confirm rubber sheets were placed at each portion when assembling as shown in figure.



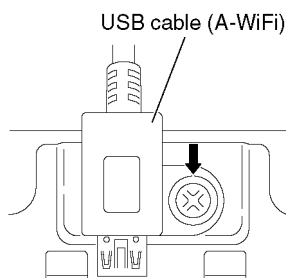
### 9.2.23. Remove the SS2-Board

1. Disconnect the flexible cable (SS65 and SS67).
2. Remove the screws (×2 ➡) and remove the SS2-Board.



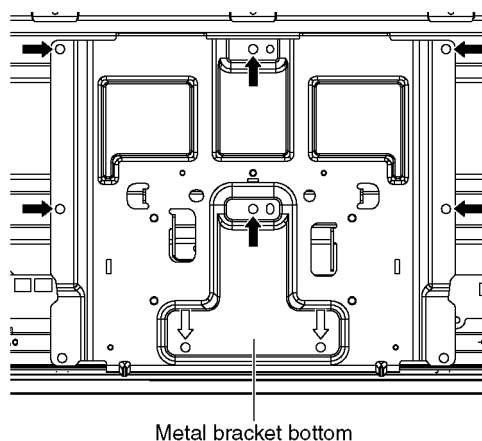
### 9.2.24. Remove the USB cable (A-WiFi)

1. Remove the screw (×1 ➡).
2. Remove the USB cable (A-WiFi).



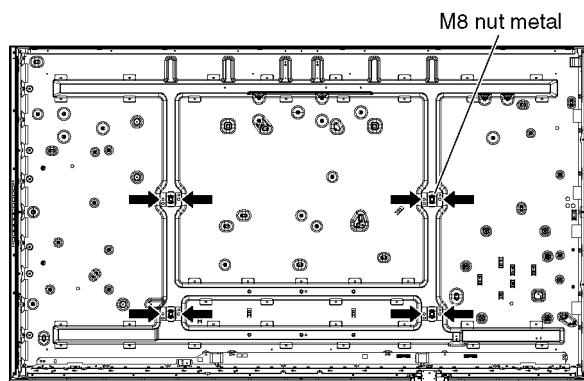
### 9.2.25. Remove the Metal bracket bottom

1. Remove the screws (×6 ➡, ×2 ⇨) and the Metal bracket bottom.



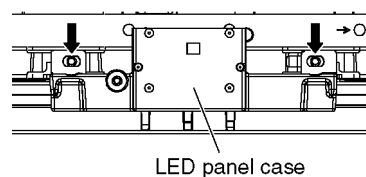
### 9.2.26. Remove the M8 nut metals

1. Remove the screws (×2 ➡ each) and remove the M8 nut metals.

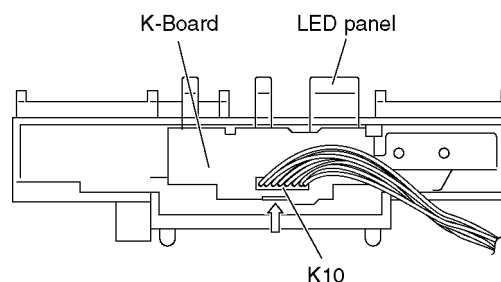


### 9.2.27. Remove the K-Board

1. Remove the screws (×2 ➡) and remove the LED panel case.

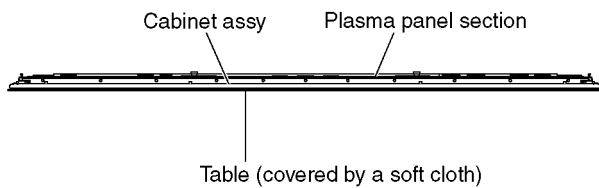


2. Disconnect the connector (K10).
3. Remove the claw (×1 ⇨) and remove the K-Board.
4. Remove the LED panel.

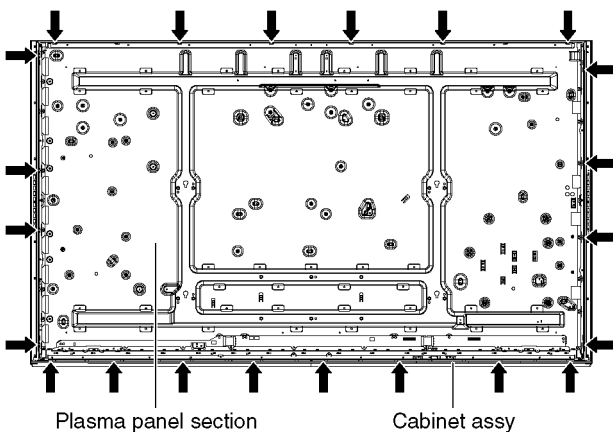


### 9.2.28. Remove the Cabinet assy from the Plasma panel section

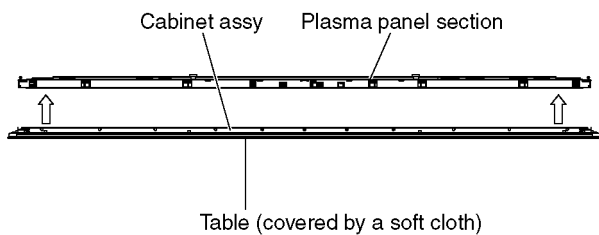
1. Remove the Plasma panel section from the servicing stand and lay on a flat surface such as a table (covered by a soft cloth) with the Plasma panel surface facing downward.



2. Remove the screws (×22 ➡).

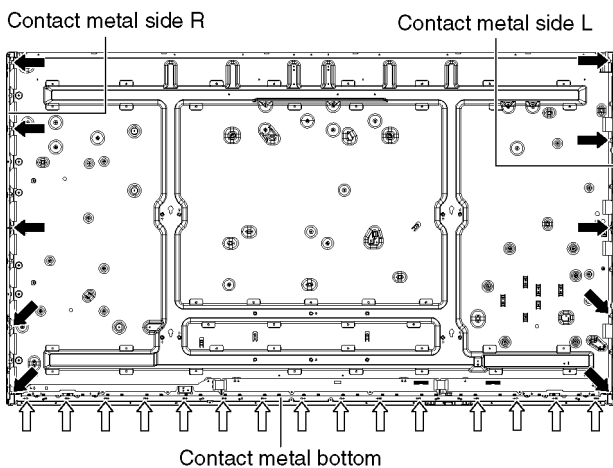


3. Remove the Cabinet assy from the Plasma panel section.



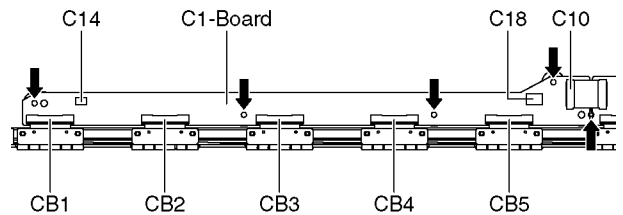
### 9.2.29. Remove the Contact metals

1. Remove the screws (×10 ➡).
2. Remove the Contact metal side (L, R).
3. Remove the screws (×15 ⇨).
4. Remove the Contact metal bottom.



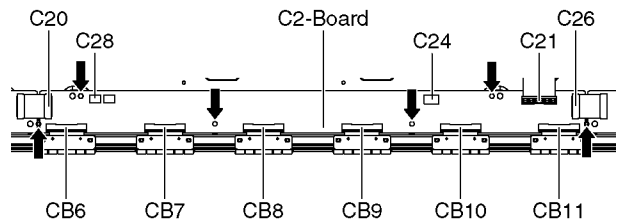
### 9.2.30. Remove the C1-Board

1. Disconnect the flexible cables (CB1, CB2, CB3, CB4 and CB5).
2. Disconnect the flexible cable (C10).
3. Disconnect the connectors (C14 and C18).
4. Remove the screws (×5 ➡) and remove the C1-Board.



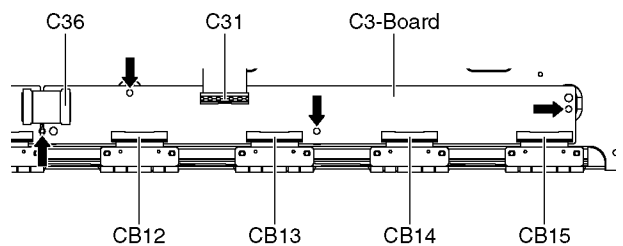
### 9.2.31. Remove the C2-Board

1. Disconnect the flexible cables (CB6, CB7, CB8, CB9, CB10 and CB11).
2. Disconnect the flexible cables (C20, C21 and C26).
3. Disconnect the connectors (C24 and C28).
4. Remove the screws (×6 ➡) and remove the C2-Board.



### 9.2.32. Remove the C3-Board

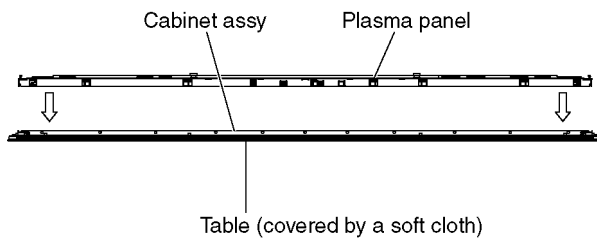
1. Disconnect the flexible cables (CB12, CB13, CB14 and CB15).
2. Disconnect the flexible cables (C31 and C36).
3. Remove the screws (×4 ➡) and remove the C3-Board.



### 9.2.33. Replace the Plasma panel

**Caution:**

Remove the Plasma panel section from the servicing stand and lay on a flat surface such as a table (covered by a soft cloth) with the Plasma panel surface facing downward.



**A new Plasma panel itself without Contact metals is fragile. To avoid the damage to new Plasma panel, carry a new Plasma panel taking hold of the Contact metals.**

1. Place a carton box packed a new Plasma panel on the flat surface of the work bench.
2. Open a box and without taking a new Plasma panel.
3. Attach the Cabinet assy and each P.C.Board and so on, to the new Plasma panel.

# 10 Measurements and Adjustments

## 10.1. Adjustment

### 10.1.1. Vsus selection

**Caution:**

When Plasma panel or A-board is replaced, Vsus should be set to LOW or HIGH.

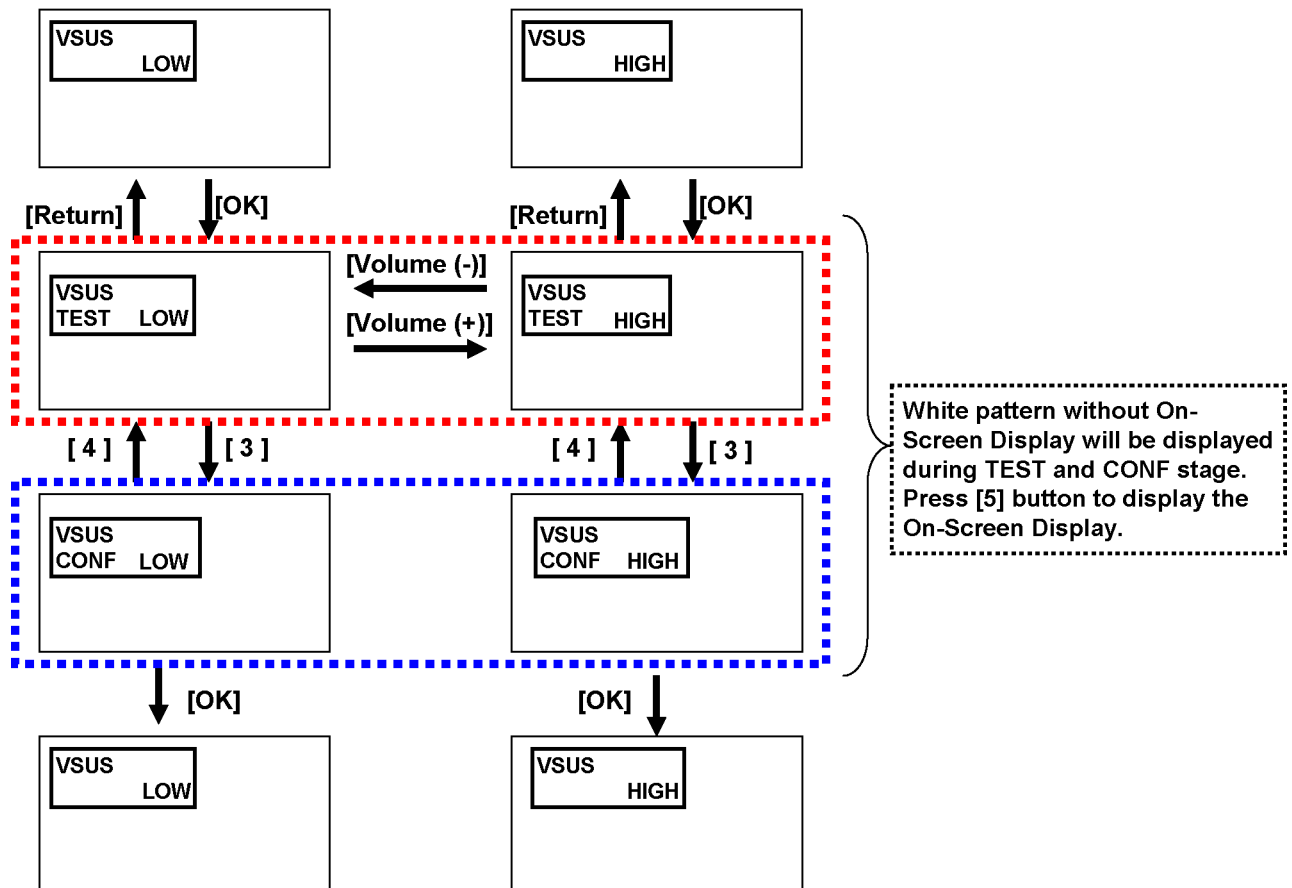
**Procedure**

1. Go into main item [VSUS] in Service Mode. LOW or HIGH will be displayed.
2. Press [OK] button to go to TEST stage.  
White pattern without On-Screen Display will be displayed during TEST and CONF stage. Press [5] button to display the On-Screen Display.
3. Press [VOL (-)] button to set to LOW.
4. In LOW setting
  - a. If no several dead pixel is visible remarkably in white pattern, press [3] button to go to CONF stage.
  - b. If the several dead pixels are visible remarkably in white pattern, Set to HIGH by press [VOL (+)] button. Press [3] button to go to CONF stage if the symptom is improved.
5. Press [OK] button in CONF stage to store LOW or HIGH.
6. Exit Service Mode by pressing [Power] button.

**Notes:**

Do not overwrite because data is written in NAND Flash after executing adjustment of V-SUS Voltage.

**Vsus selection in Service mode**



## 10.1.2. White balance adjustment

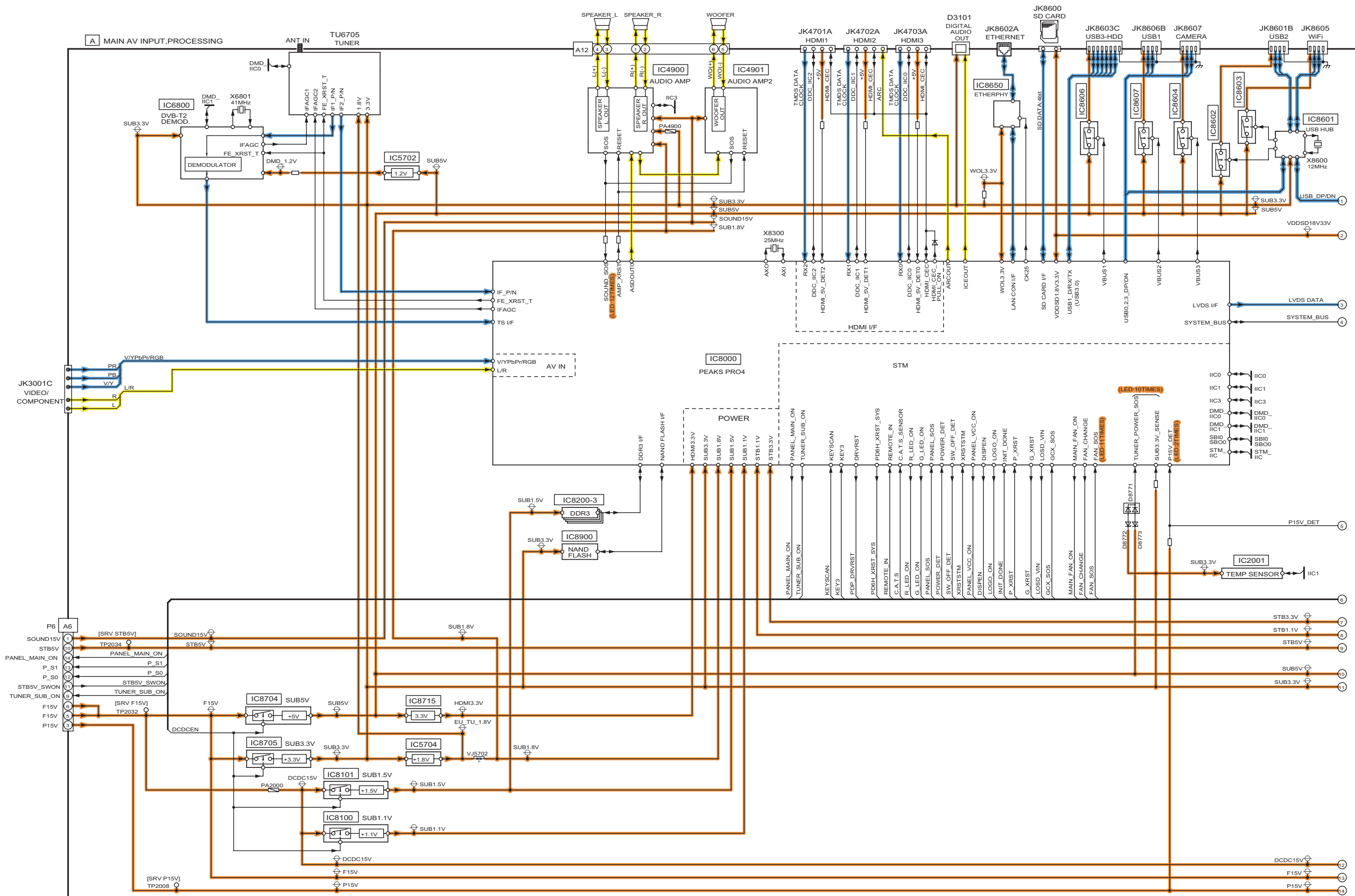
Name of measuring instrument	Remarks																										
Color analyzer (Minolta CS-2000 or equivalent)																											
Procedure	Remarks																										
<div>1. Enter the Service mode.</div> <div>2. Receive the Analog-RF (except for no signal) or set CVBS/YUV/HDMI (no signal is available).</div> <div>3. Select [WB-ADJ] by using [1] and [2] key in the remote controller.</div> <div>4. Check that the colour balance and the viewing mode is the values written in table1 and 2.</div> <div>5. [INNER PATTERN] is displayed by using [5] key by using [5] key in the remote controller.</div> <div>6. Select [G-CUTOFF] by using the [3] and [4] key in the remote controller, and set the value to [80] by using the volume [+] and [-] key. Also, [B-CUTOFF] and [R-CUTOFF] set to [80]</div> <div>7. Set [G-DRIVE] value to the initial data (ex. D0).</div> <div>8. Set the color analyzer and adjust color point to the values written in table1 by using [B-DRIVE] and [R-DRIVE]</div> <div>9. Increase RGB-DRIVE value so that the maximum drive value of one of R-DRIVE or G-DRIVE or B-DRIVE should become [FF] ([ALL-DRIVE] set to [FF].)</div> <div><div>Table 1 : White Balance Target value</div><table><tr><th colspan="2">COOL</th><th colspan="2">NORMAL</th><th colspan="2">WARM</th></tr><tr><th>x</th><th>y</th><th>x</th><th>y</th><th>x</th><th>y</th></tr><tr><td>0.267</td><td>0.269</td><td>0.288</td><td>0.296</td><td>0.313</td><td>0.326</td></tr></table><div><div>Table2 : Setting of Viewing Mode</div><table><tr><th>Colour Balance</th><th>Viewing Mode</th></tr><tr><td>Cool</td><td>Dynamic</td></tr><tr><td>Normal</td><td>Dynamic</td></tr><tr><td>Warm</td><td>Cinema</td></tr></table></div></div>	COOL		NORMAL		WARM		x	y	x	y	x	y	0.267	0.269	0.288	0.296	0.313	0.326	Colour Balance	Viewing Mode	Cool	Dynamic	Normal	Dynamic	Warm	Cinema	
COOL		NORMAL		WARM																							
x	y	x	y	x	y																						
0.267	0.269	0.288	0.296	0.313	0.326																						
Colour Balance	Viewing Mode																										
Cool	Dynamic																										
Normal	Dynamic																										
Warm	Cinema																										



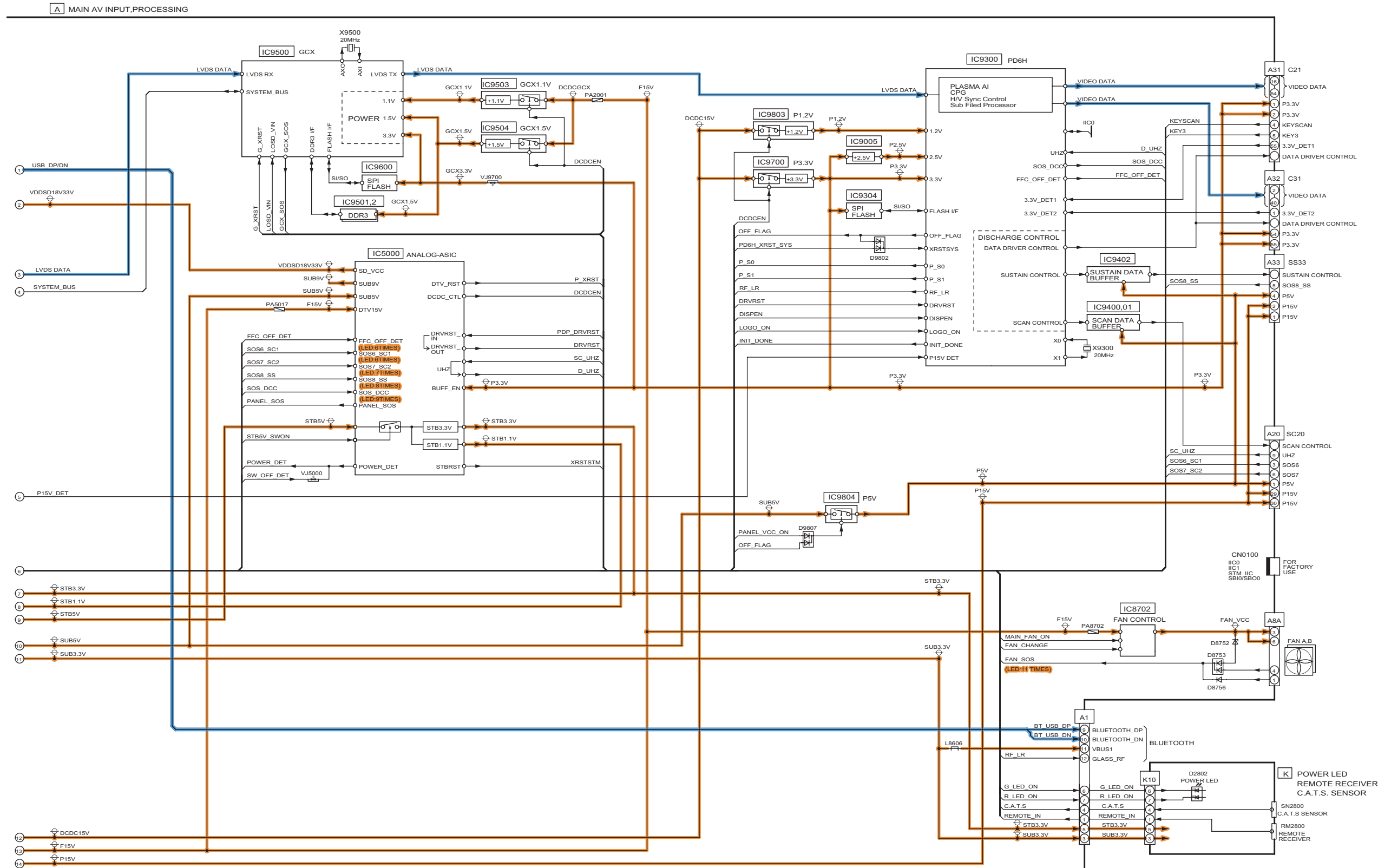
### 11.1. Main Block Diagram



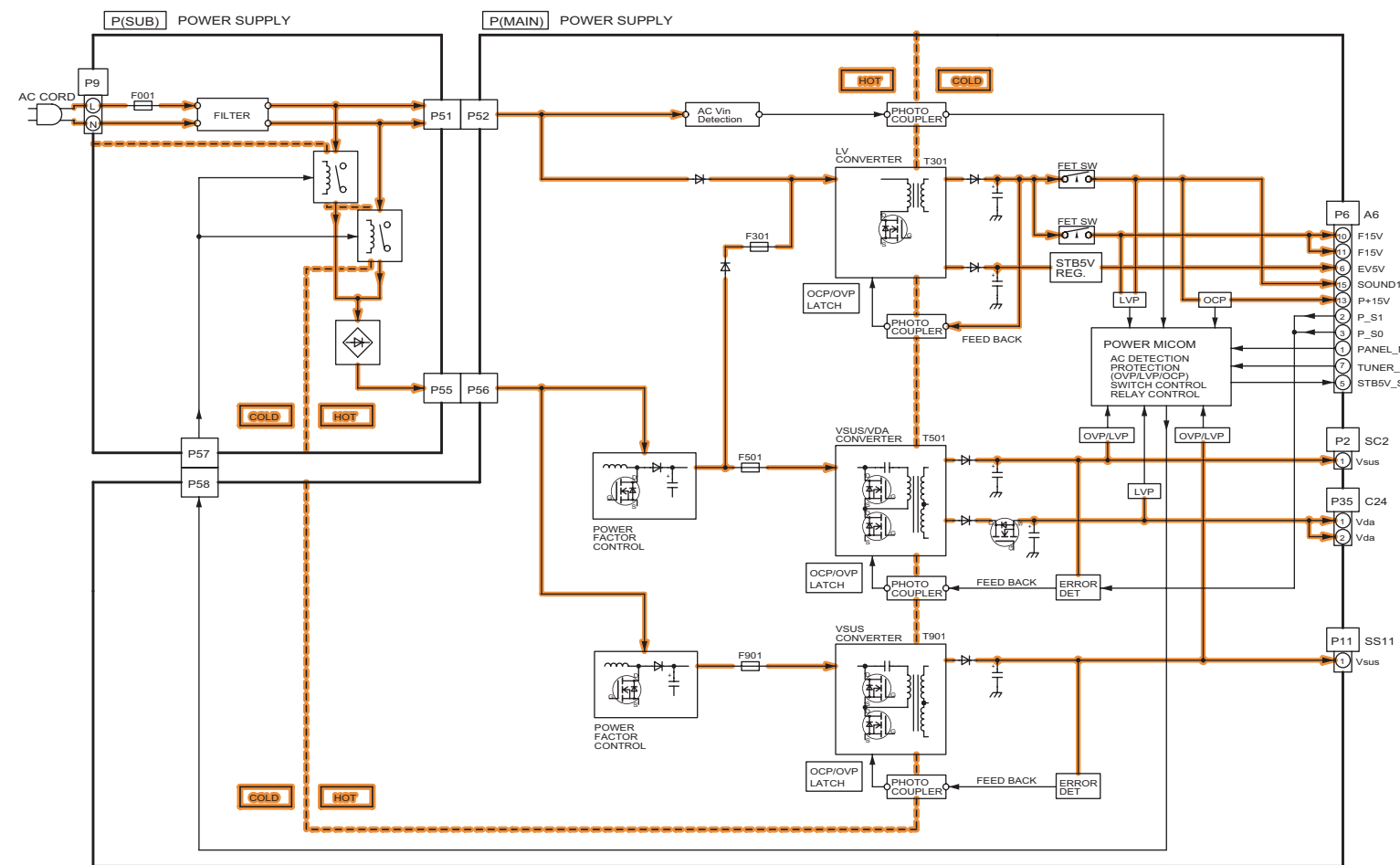
## 11.2. Block (1/4) Diagram



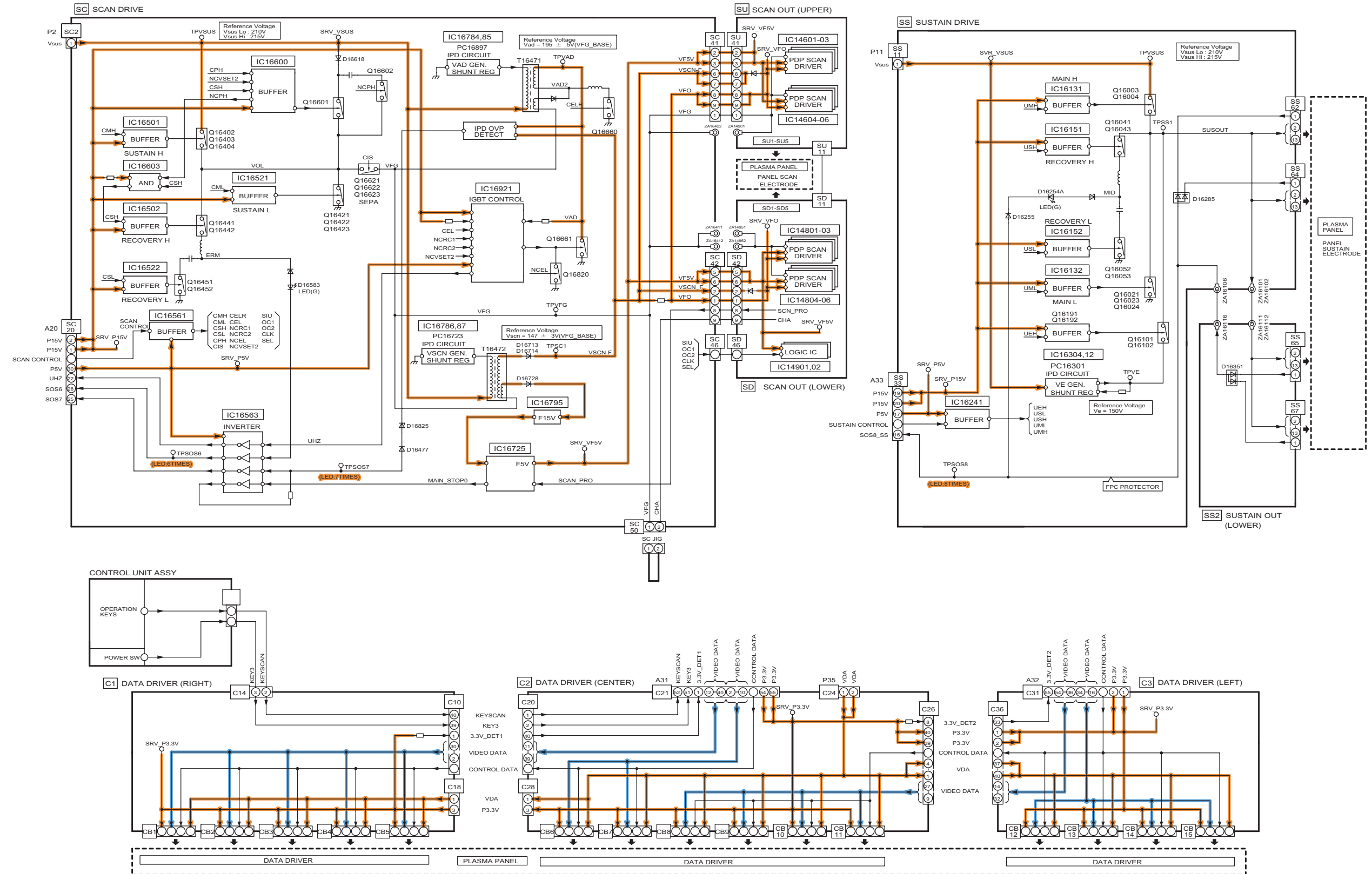
### 11.3. Block (2/4) Diagram



11.4. Block (3/4) Diagram



# 11.5. Block (4/4) Diagram





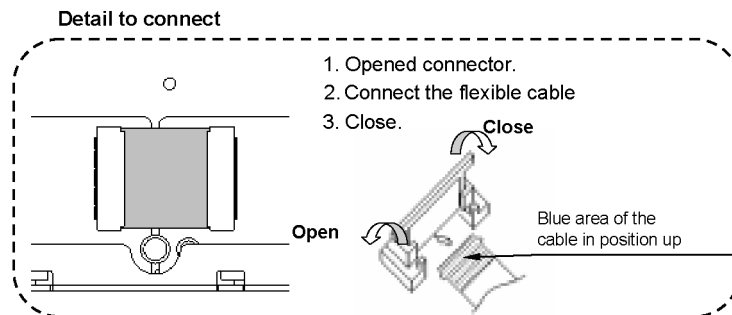
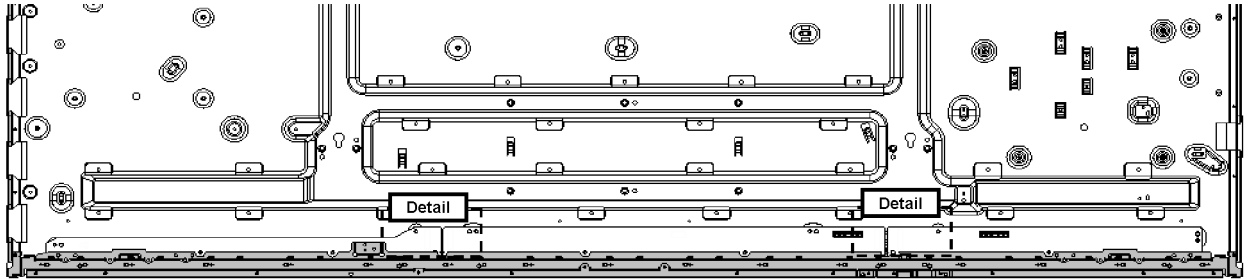
# 12 Wiring Connection Diagram

## 12.1. Caution statement.

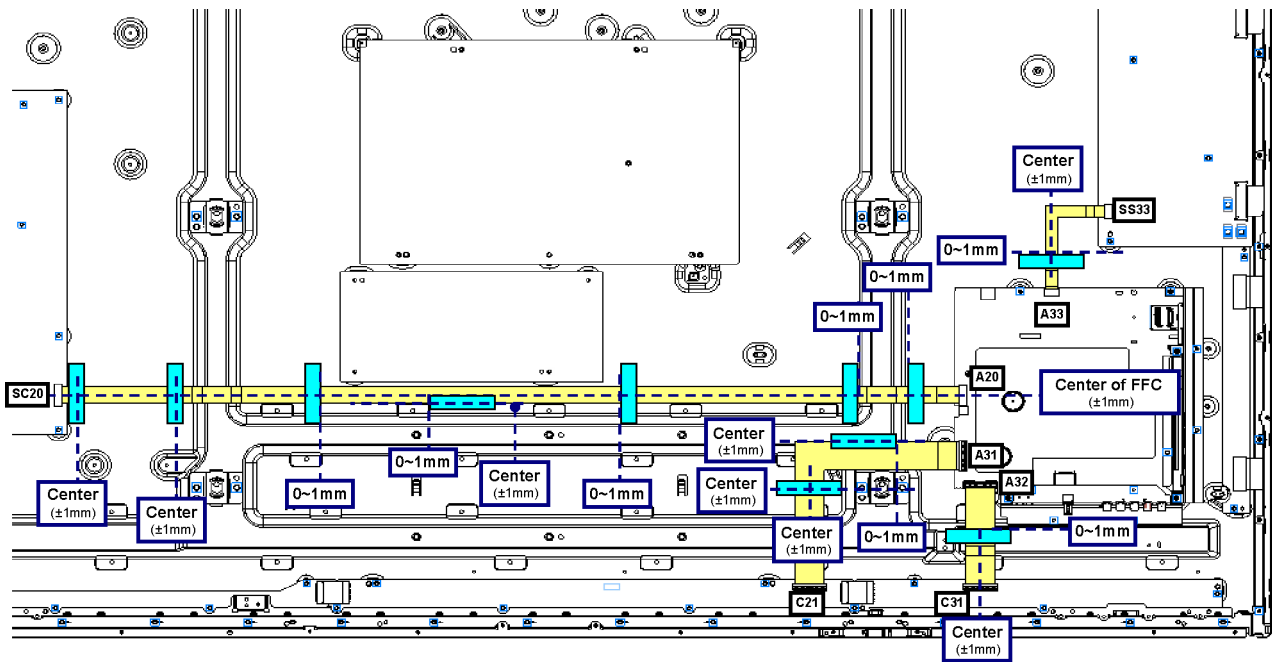
### Caution:

Please confirm that all flexible cables are assembled correctly.  
Also make sure that they are locked in the connectors.  
Verify by giving the flexible cables a very slight pull.

## 12.2. Wiring (1)



12.3. Wiring (2)



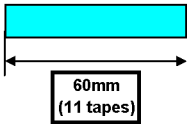
Please open and close the connector by using both hands.

Open connector

Blue area of the cable in position up

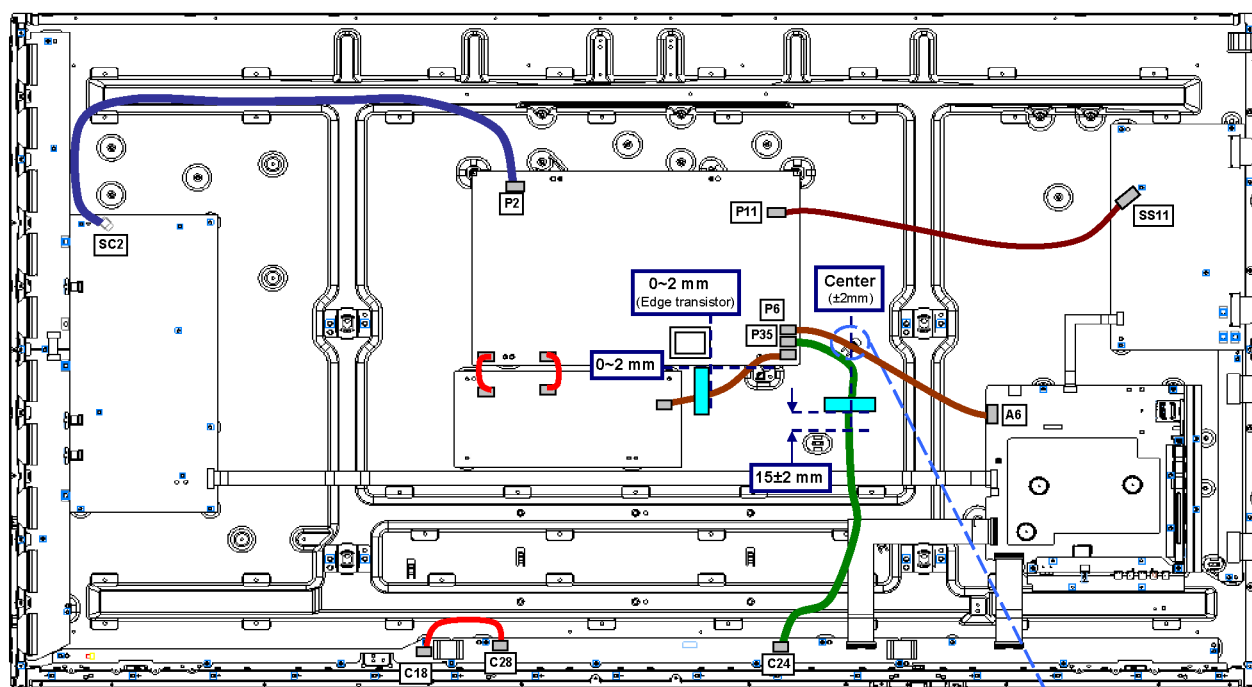
Note: Confirm the flexible cables is firmly connected.

Note: When disconnect the flexible cable, disconnect the flexible cable after removing the connector.



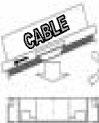


## 12.4. Wiring (3)

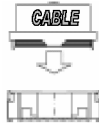


**Note.**  
Install the cable correctly  
please insert the connector straight.

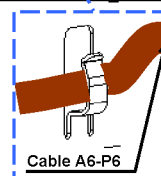
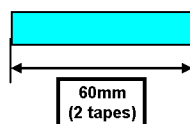
**INCORRECT**



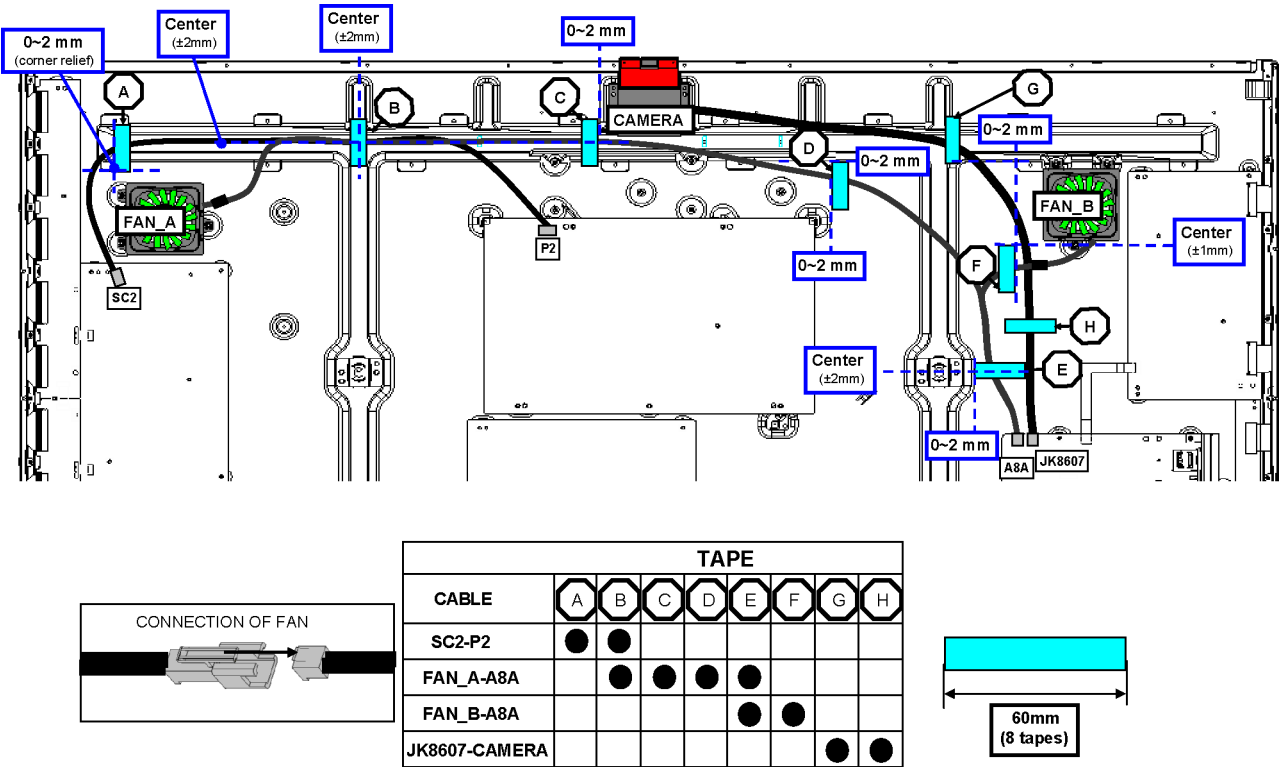
**CORRECT**



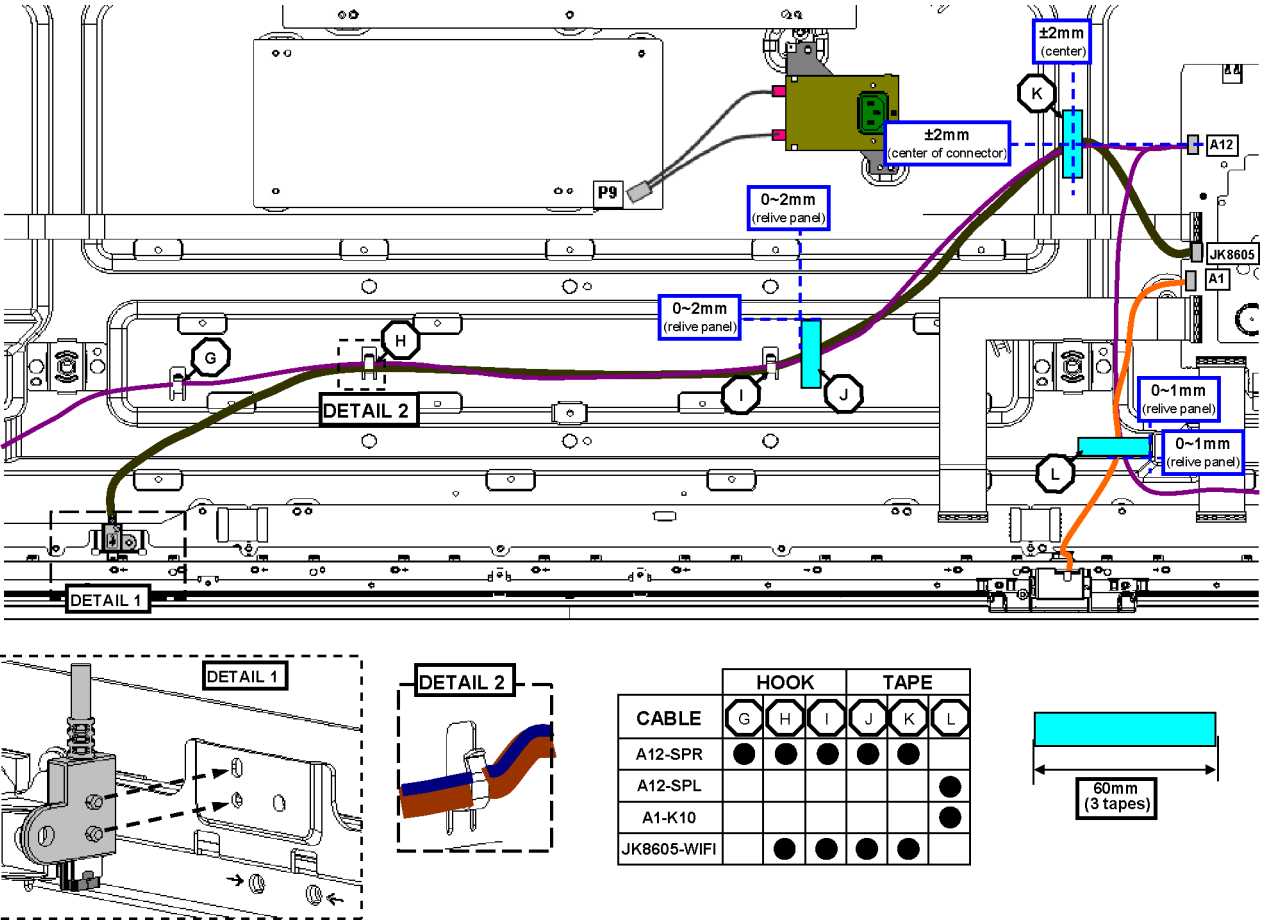
**CONNECTOR**



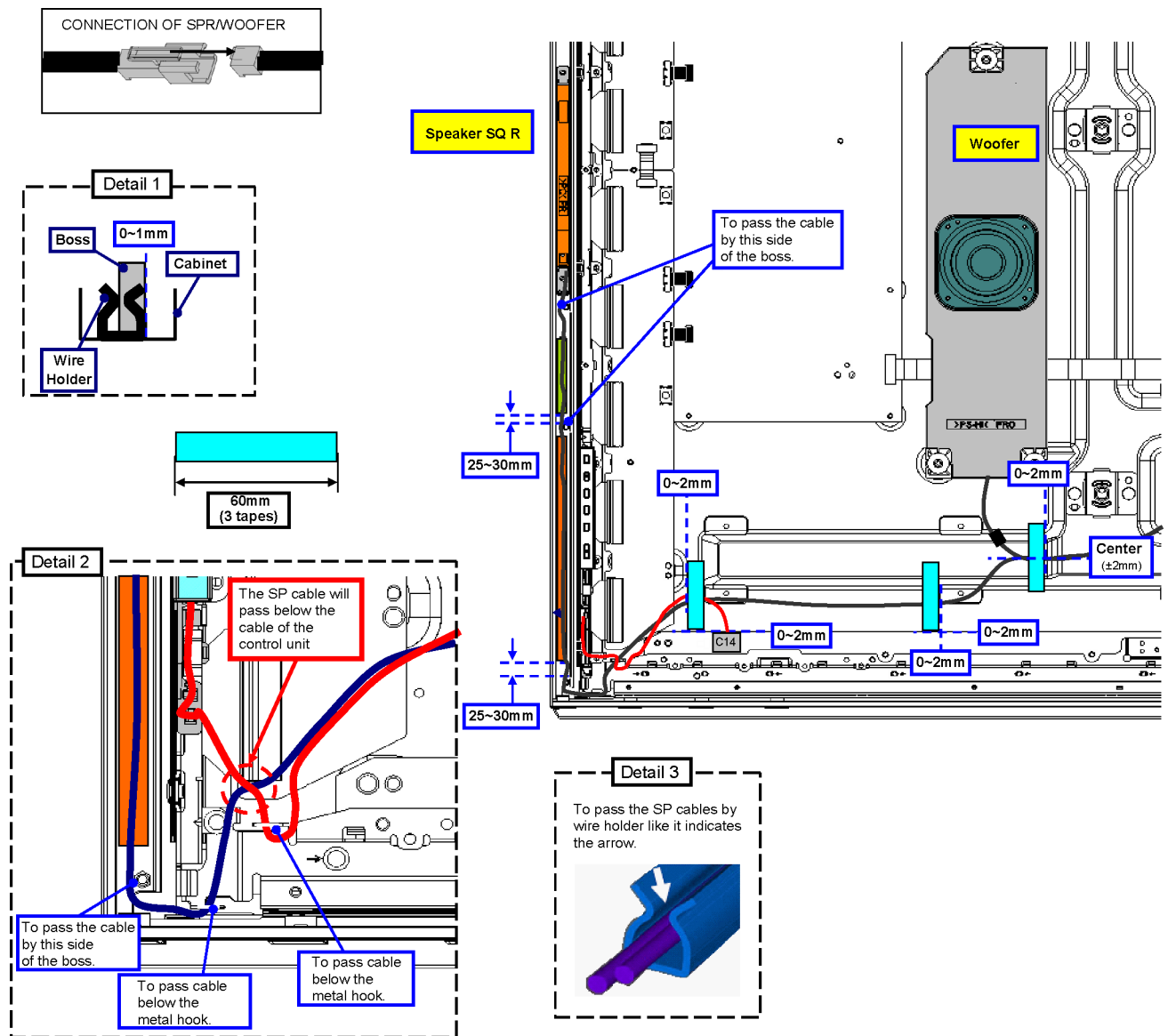
12.5. Wiring (4)



12.6. Wiring (5)



## 12.7. Wiring (6)



12.8. Wiring (7)

