



Philips Domestic Appliances and Personal Care

Service Manual

PRODUCT INFORMATION

General

- Rechargeable / Mains
- Automatic voltage selection
- Washable
- One hour charging time
- Green Li-ion battery

Safety information

- This product meets the requirements regarding interference suppression on radio and TV.
- After the product has been repaired, it should function properly and has to meet the safety requirements as officially laid down at this moment.

TECHNICAL INFORMATION

- Voltage : 100 - 240 V, 50 / 60 Hz
- Motor voltage : 3.6 V
- Shaving heads : HQ9 (4222 036 11150)
- SAP coding : HQ9070

DISASSEMBLY- AND RE-ASSEMBLY ADVISE

- Remove shaving unit, to prevent damages during repairing.
- Remove the two screws **A** on the backside of the shaver.
- Remove the two screws **B** out of the hairchamber.
- Remove the hairchamber from the body.
- Remove the cover.
- Remove the bridge.
- Disconnect the wires from the motor.
- Remove the driving unit by pushing the motor.
- Disconnect the wiring strip (L.C.D.) from the power supply.
- Remove the power supply.

REPAIR INSTRUCTION

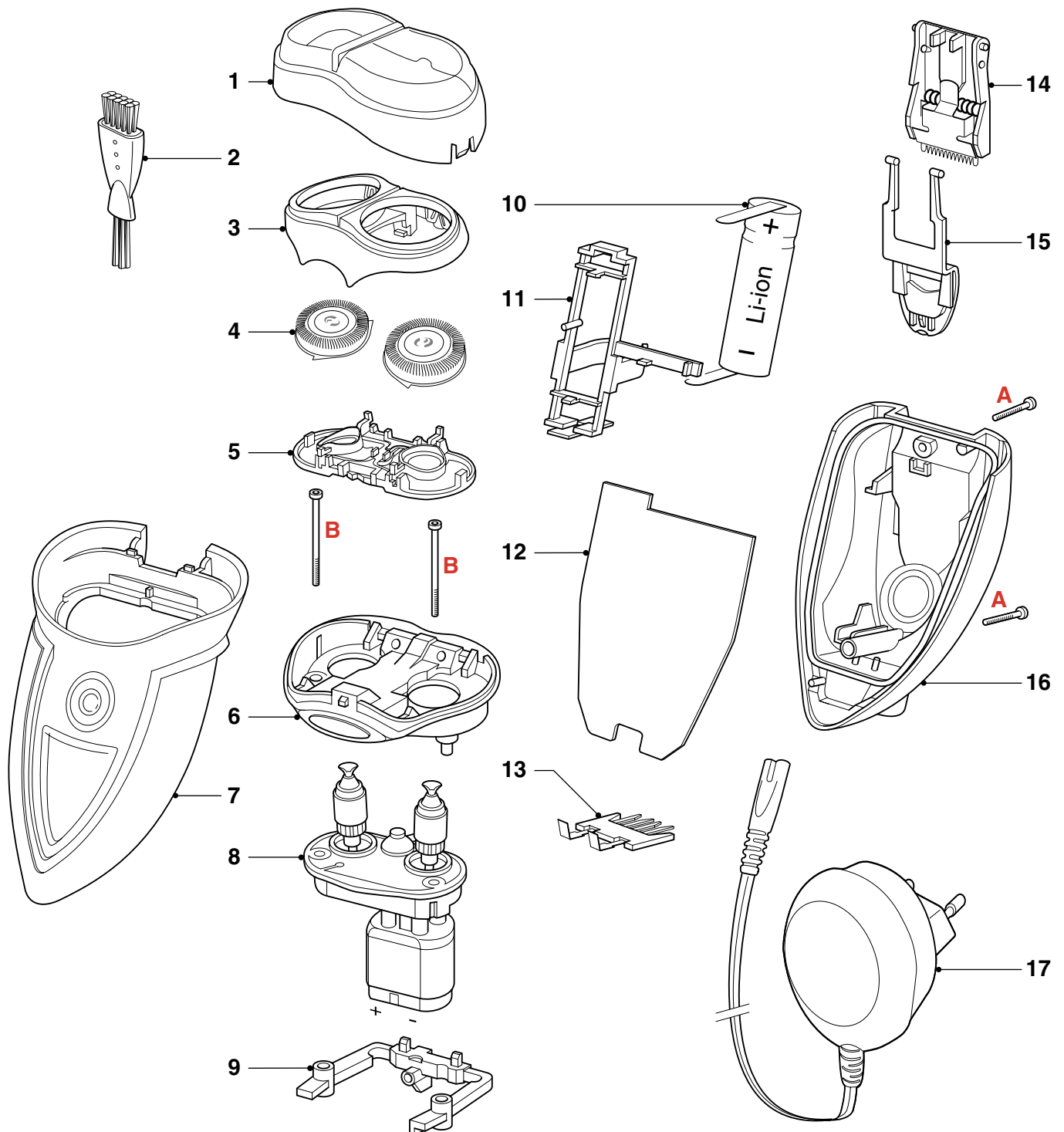
- No specific issues

OPTIONAL (accessories)

- Car cord : 4222 036 08920

PARTS LIST & EXPLODED VIEW

HQ9070



Pos	Service code	Description
1	4222 036 11690	Protecting cap
2	4222 036 02770	Cleaning brush
3	4222 036 11820	Bracket
4	4222 036 11150	Shaving heads
5	4222 036 11710	Holder assy
6	4222 036 11720	Hairchamber assy
7	4222 036 11810	Housing
8	4222 036 11830	Driving unit assy
9	4222 036 11740	Bridge
10	4222 036 11960	Li-ion battery
11	4222 036 11970	Spacer
12	4222 036 11840	Power supply

Pos	Service code	Description
13	4222 036 07940	Contact lip
14	4222 036 11750	Trimmer assy
15	4222 036 11760	Trimmer knob
16	4222 036 11850	Cover assy
17	4222 036 06790	Power plug EUR
	4222 036 08930	Power plug JAP
	4222 036 06800	Power plug CAN/TW/VEN
	4222 036 04040	Power plug PRC
	4222 036 04020	Power plug AUS
A	4822 502 14545	Screw
B	4222 036 11790	Screw hairchamber
	4222 036 11860	Pouch