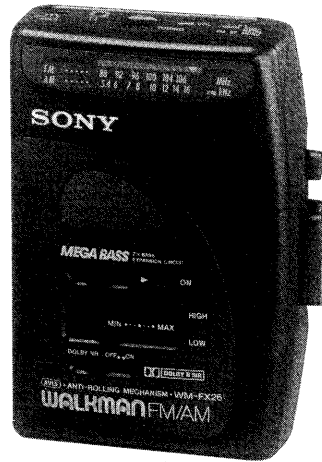


WM-FX26

SERVICE MANUAL

AEP Model
UK Model
E Model



Specifications

Radio Frequency

- FM : 87.6 - 107MHz (Germany)
: 87.5 - 108MHz (Italy)
: 87.6 - 107.9 MHz (Other countries)
- AM : 526.5 - 1,606.5 kHz (Italy)
: 531 - 1,602 kHz (Other countries)

Power Requirements

- 3 V DC Batteries AA (R6) x 2
- External DC 3 V power sources

Battery Life

(approximate hours when using the batteries specified below)

Battery	Playback	Radio
Sony Alkaline AM3 (N)	7 hours	30 hours
Sony SUM-3 (NS)	3.5 hours	15 hours
Rechargeable battery NC-AA (WM) (Full charge)	2.5 hours	9.5 hours

Supplied Accessories

- Stereo headphones (1)
- Belt clip (1)

Optional Accessories


- AC power adaptor AC-E30L
- Car battery cord DCC-E130L

Your dealer may not handle some of the above listed accessories. Please ask the dealer for detailed information. Design and specifications are subject to change without notice.

Note

This appliance conforms with EEC Directive 87/308/EEC regarding interference suppression.

Dolby noise reduction manufactured under license from Dolby Laboratories Licensing Corporation.

"DOLBY" and the double-D symbol  are trademarks of Dolby Laboratories Licensing Corporation.

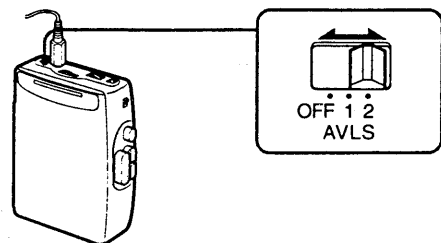
Model Name Using Similar Mechanism	WM-EX19
Tape Transport Mechanism Type	MT-WMEX19-49 MT-WMEX19M-49

Featuring

AVLS (Automatic Volume Limiter System)

The AVLS selector allows you to limit the maximum volume of your WALKMAN personal stereo without degrading the sound quality.

- When the AVLS selector is set to either position 1 or 2 (around 95 dB, 85 dB respectively), the volume will be kept at a moderate level without the degradation of the sound quality, even if you attempt to turn the volume up higher.
- When the AVLS selector is set to either position 1 or 2, the playback sound may be distorted or unstable according to the music (especially bass boosted part). If this happens, turn down the volume.
- When the AVLS selector is turned off, you will be able to enjoy the full volume capability of your WALKMAN personal stereo.

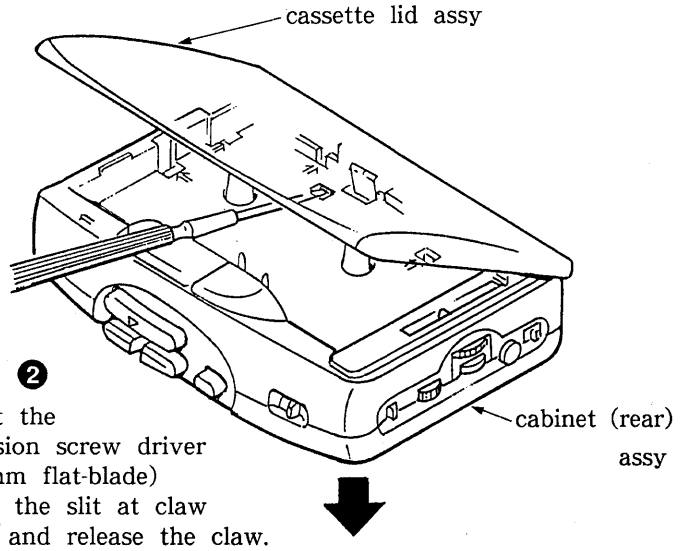
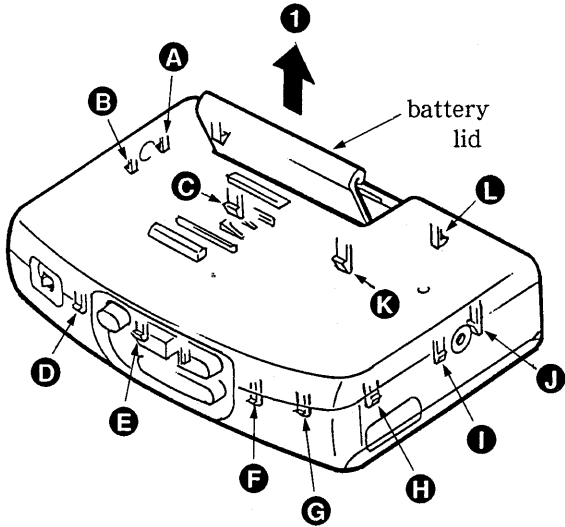


RADIO CASSETTE PLAYER
SONY[®]

SECTION 1 DISASSEMBLY

• Follow the disassembly procedure in the numerical order given.

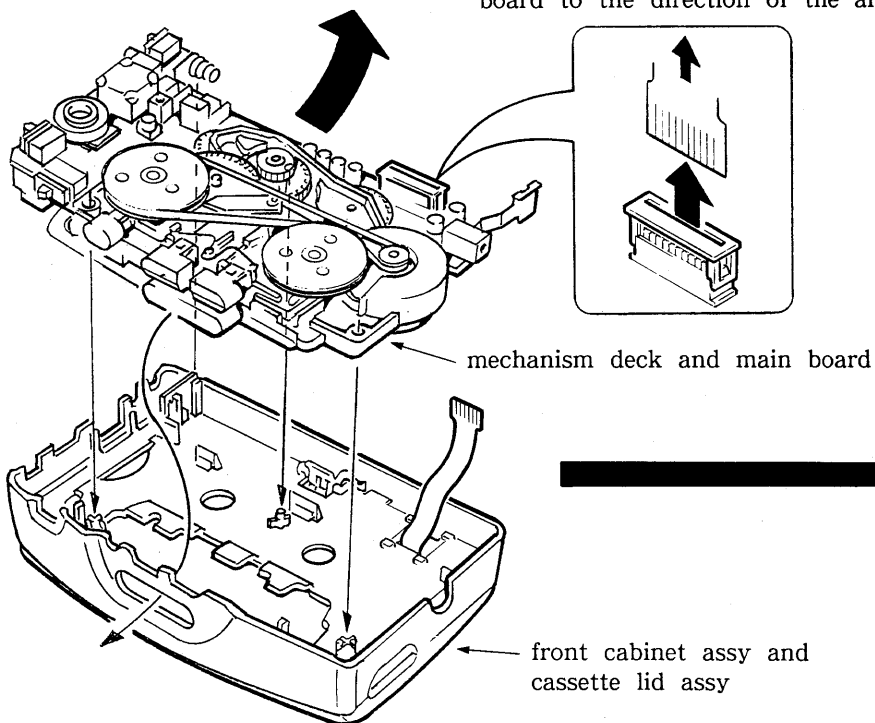
CABINET (REAR) ASSY



Insert the precision screw driver (1.4mm flat-blade) in to the slit at claw "=>" and release the claw.

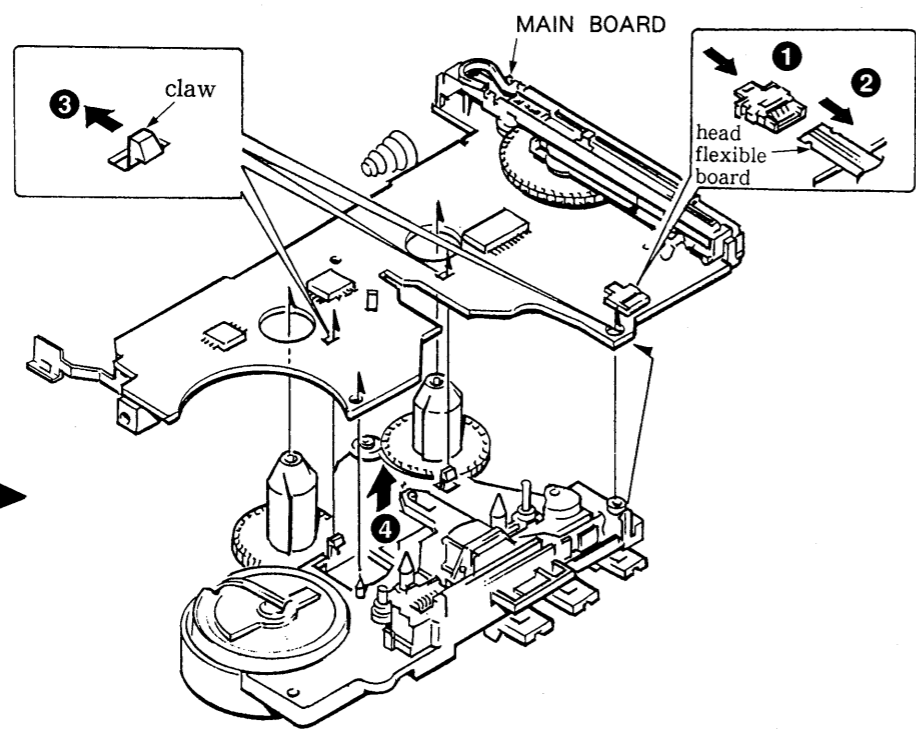
3
Remove the cabinet (rear) assy. (Release all claw **A** to **L** in alphabetical order.)

MECHANISM DECK AND MAIN BOARD

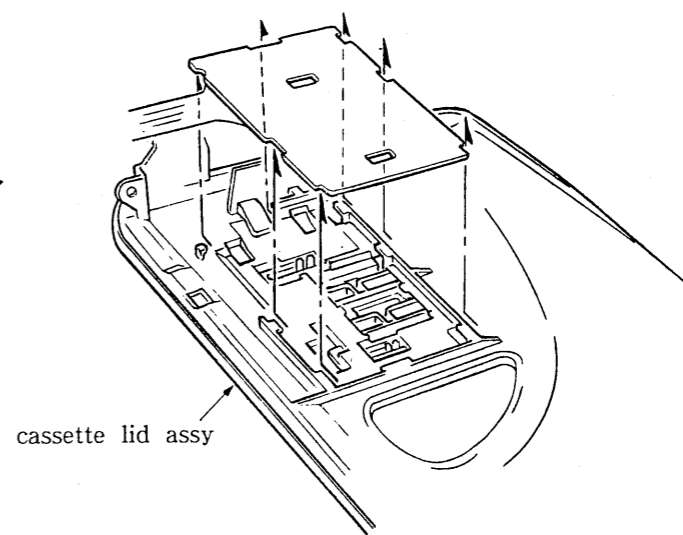
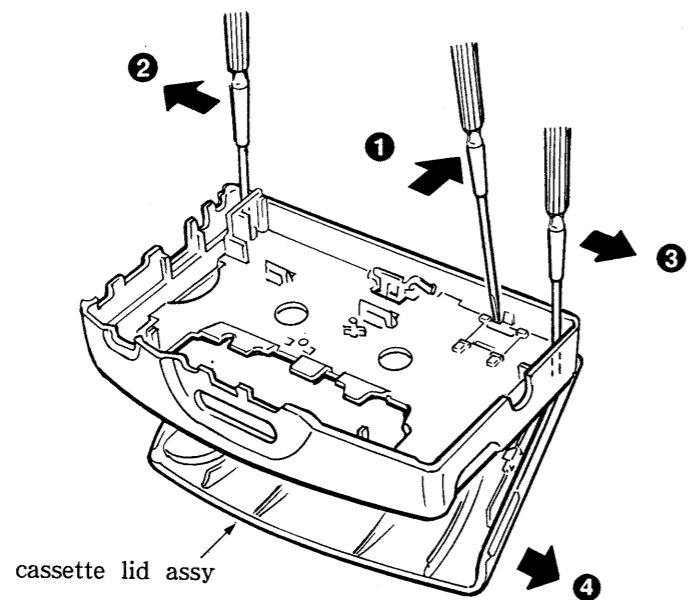


Remove mechanism deck and main board to the direction of the arrow.

MAIN BOARD

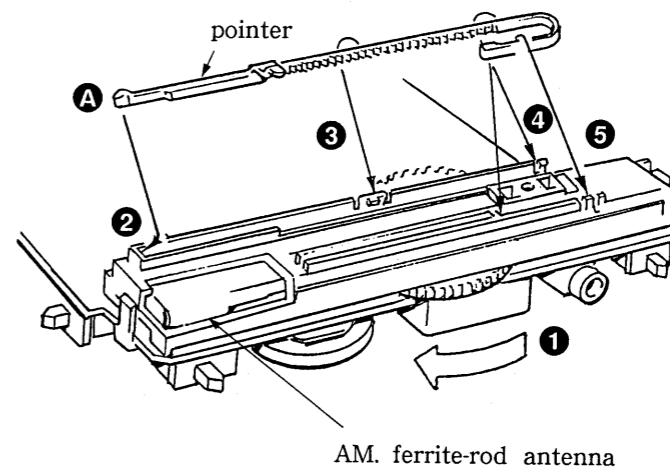


CASSETTE LID ASSY



Dial pointer setting

- 1 The knob (TUN) fully turned to the direction of arrow
- 2 Insert the A position of pointer to the ditch of left edge
- 3 Hook the pointer to numerical order of number 3, 4 and 5



SECTION 2 ADJUSTMENTS

2-1. MECHANICAL ADJUSTMENTS

PRECAUTION

1. Clean the following parts with a denatured-alcohol-moistened swab :

playback head	pinch roller
capstan	rubber belts
2. Demagnetize the playback head with a head demagnetizer.
3. Do not use a magnetized screwdriver for the adjustments.
4. After the adjustments, apply suitable locking compound to the parts adjusted.
5. The adjustments should be performed with the rated power supply voltage (2.5V) unless otherwise noted.

Torque Measurement

Mode	Torque meter	Meter reading
FWD	CQ-102C	20 - 42 g-cm (0.28 - 0.58 oz-inch)
FWD Back Tension		less than 3 g-cm (less than 0.04 oz-inch)
FF, REW	CQ-201B	More than 60 g-cm (More than 0.83 oz-inch)

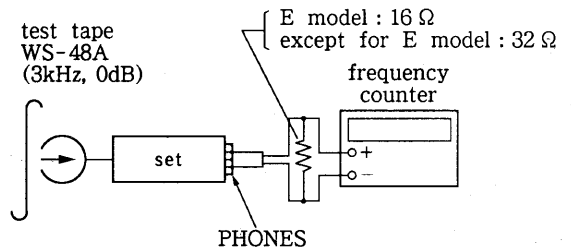
2-2. ELECTRICAL ADJUSTMENTS

- Supplied voltage : 2.5V
 - Switch and control position
 RADIO/TAPE switch : TAPE
 AVLS switch : OFF
 TAPE POSITION switch : NORMAL
 MEGA BASS switch : OFF
 DOLBY switch : OFF
 VOLUME CONTROL : maximum
- Test Tape

Type	Signal	Used for
WS-48A	3 kHz, 0 dB	Tape Speed Adjustment

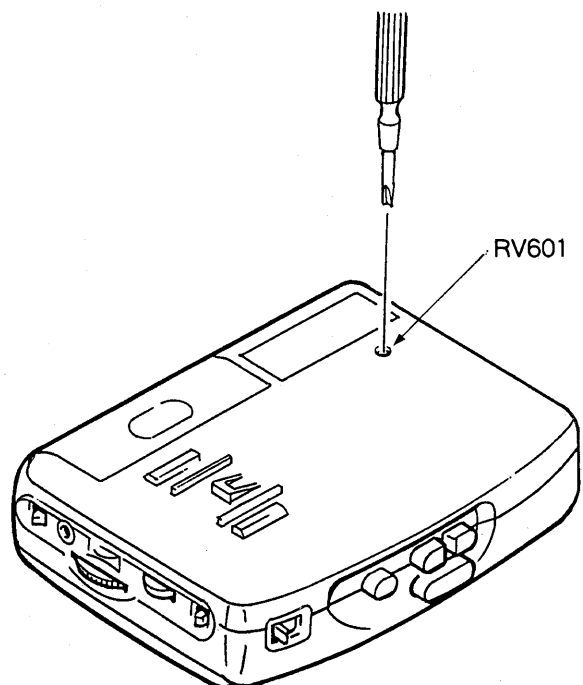
TAPE SPEED ADJUSTMENTS

Procedure :



Play back WS-48A (tape center portion) in FWD mode. Adjustment the RV601 so that frequency counter reads $2970 \pm 15\text{Hz}$

Adjustment Location:

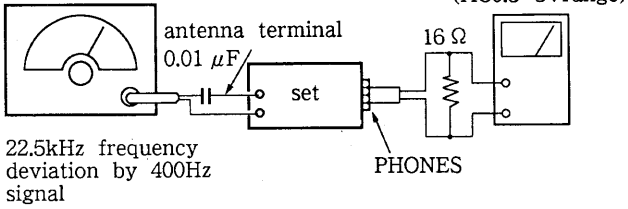


Radio section

FUNCTION switch : RADIO

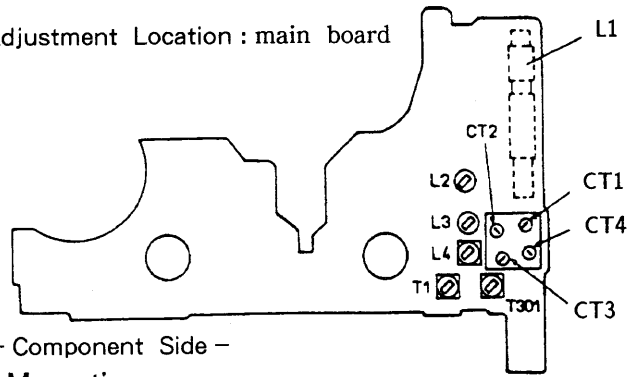
FM section

FM RF Signal Generator



22.5kHz frequency deviation by 400Hz signal

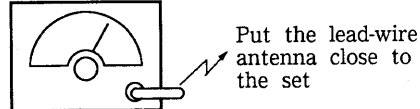
Adjustment Location : main board



- Component Side -

AM section

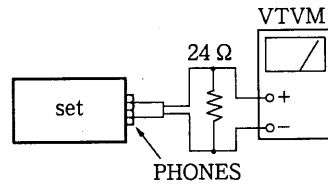
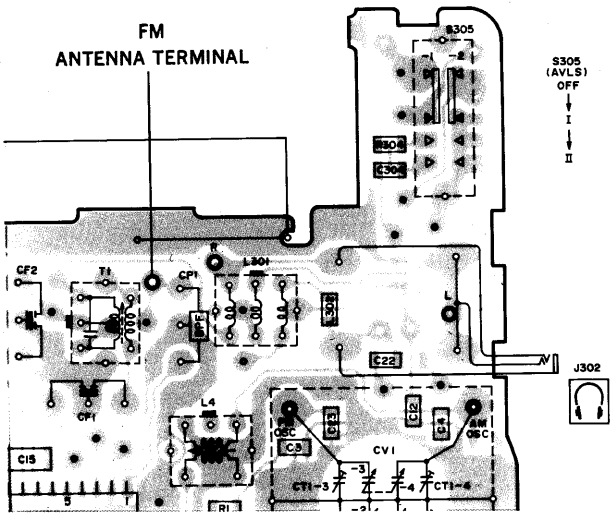
AM RF Signal Generator



30% amplitude modulation by 400Hz signal

Repeat the procedures in each adjustment several times, and the frequency coverage and tracking adjustments should be final done by the trimmer capacitors.

Repeat the procedures in each adjustment several times, and the frequency coverage and tracking adjustments should be final done by the trimmer capacitors.



AM IF Alignment

Adjustment part	Reading on VTVM
T1	maximum

FM Frequency Coverage Adjustment

Pointer Position	SG frequency	Adjustment part	Reading on VTVM
f minimum	86MHz 《87.35MHz》 [87.35MHz]	L3	maximum
f maximum	109.5MHz 《107.8MHz》 [108.25MHz]	CT3	

《 》 : AEP model, [] : IT model

AM Frequency Coverage Adjustment

Pointer Position	SG frequency	Adjustment part	Reading on VTVM
f minimum	505kHz 《521.5kHz》 [516.5kHz]	L4	maximum
f maximum	1,750kHz 《1,631kHz》 [1,631.5kHz]	CT4	

《 》 : AEP model, [] : IT model

FM Tracking Adjustment

SG and set frequency	Adjustment part	Reading on VTVM
86MHz 《87.35MHz》 [87.35MHz]	L2	maximum
109.5MHz 《107.8MHz》 [108.25MHz]	CT2	

《 》 : AEP model, [] : IT model

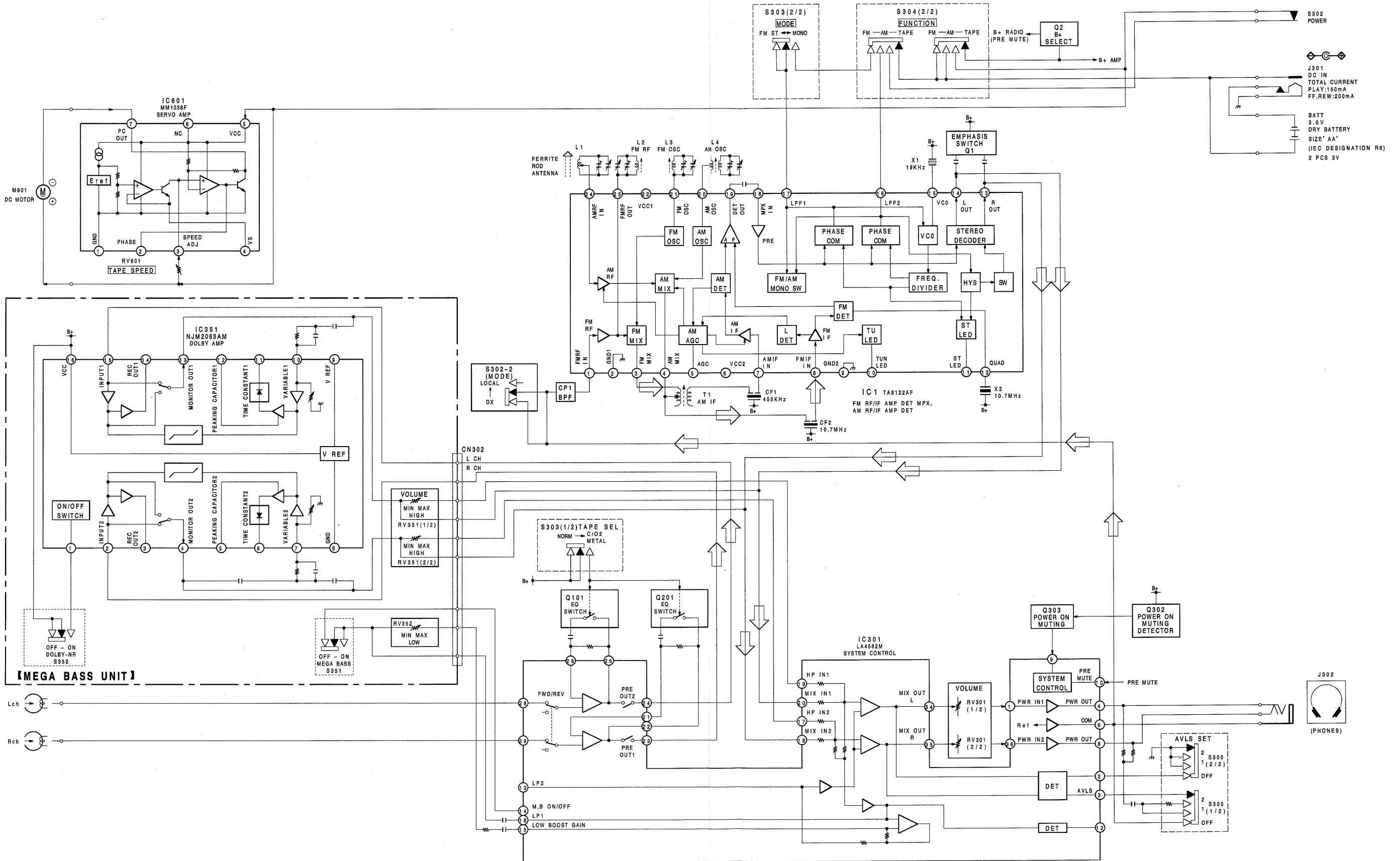
AM Tracking Adjustment

SG and set frequency	Adjustment part	Reading on VTVM
600kHz 《800kHz》 [800kHz]	L1	maximum
1,400kHz 《1,300kHz》 [1,300kHz]	CT1	

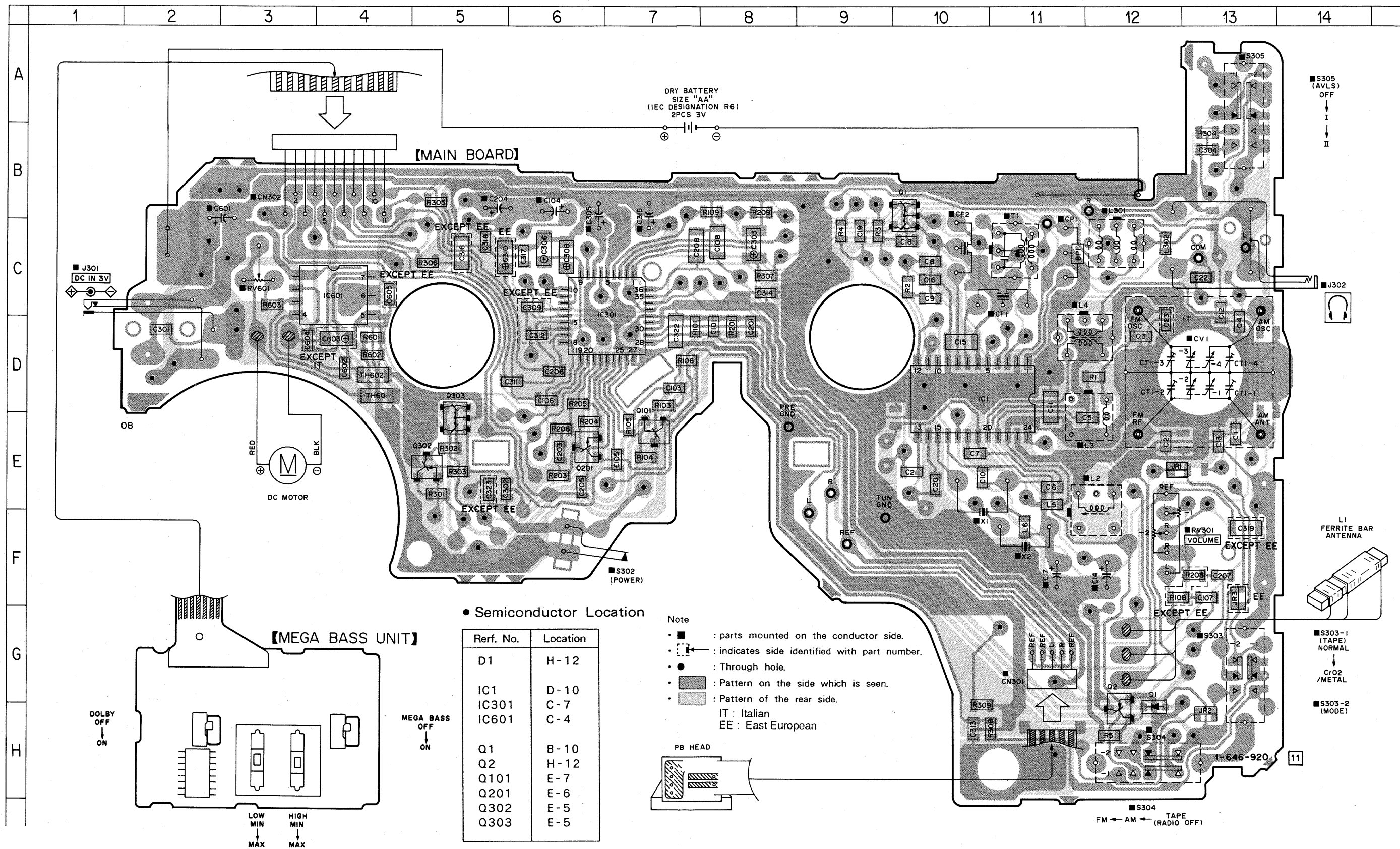
《 》 : AEP model, [] : IT model

SECTION 3
DIAGRAMS

3-1. BLOCK DIAGRAM



3-2. PRINTING WIRING BOARD

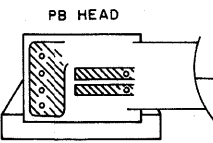


• Semiconductor Location

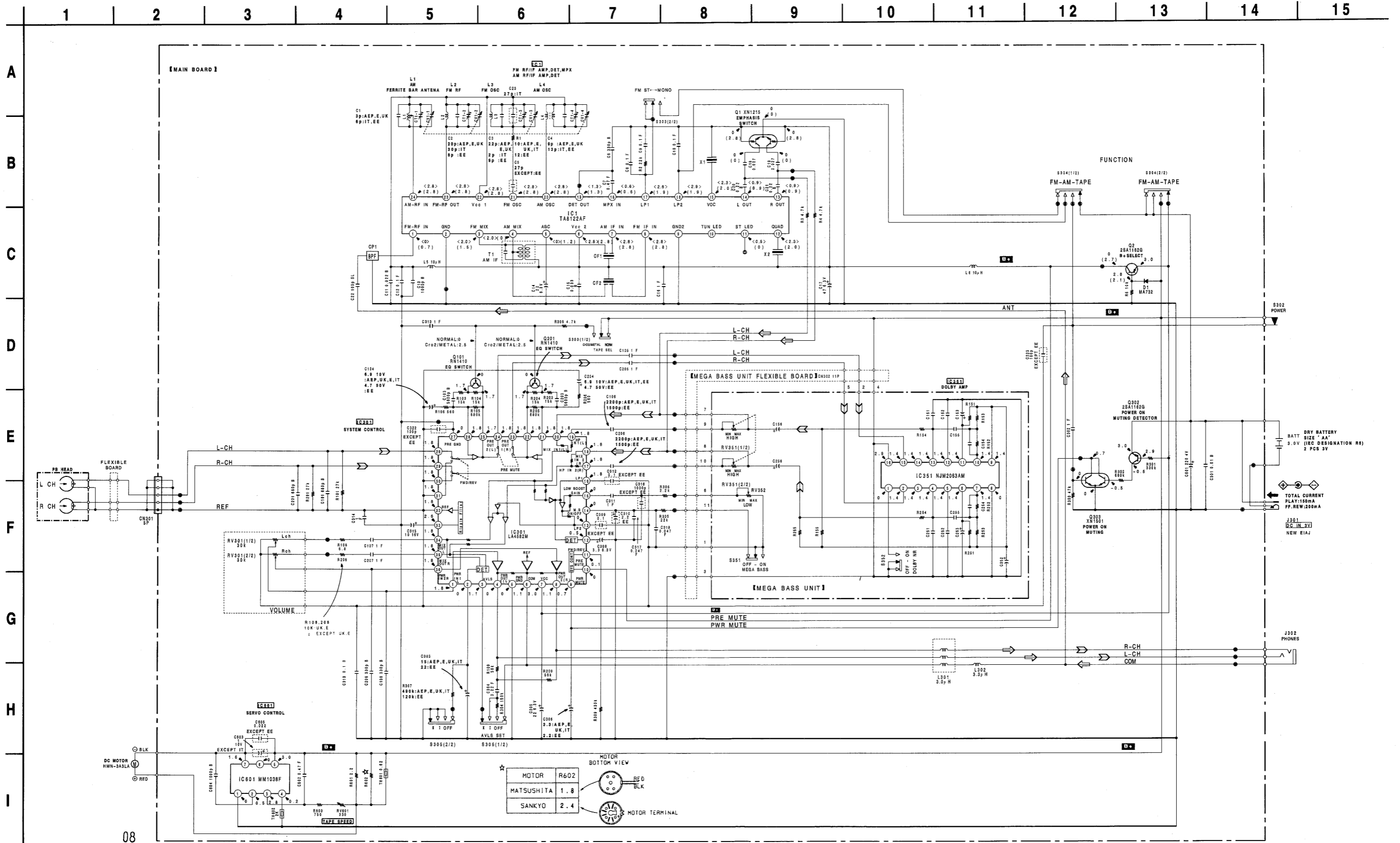
Ref. No.	Location
D1	H-12
IC1	D-10
IC301	C-7
IC601	C-4
Q1	B-10
Q2	H-12
Q101	E-7
Q201	E-6
Q302	E-5
Q303	E-5

Note

- : parts mounted on the conductor side.
- : indicates side identified with part number.
- : Through hole.
- ▨ : Pattern on the side which is seen.
- ▩ : Pattern of the rear side.
- IT : Italian
- EE : East European



3-3. SCHEMATIC DIAGRAM



Note:

- All capacitors are in μF unless otherwise noted, $\text{pF} = \mu\text{F} \cdot 50\text{WV}$ or less are not indicated except for electrolytics and tantalums.
- All resistors are in ohms, 1/4W or less unless otherwise noted.
- Δ : internal component.
- B+**: B + Line.
- \square : adjustment for repair.
- Total current is measured with no cassette installed.

- Power voltage is dc 3V and fed with regulated dc power supply from external power jack.
- Voltages are DC between measurement points and ground under no-signal (PLAY) conditions.
- no make : TAPE PB
- () : FM
- < > : AM

- Voltages are taken with a VOM (input impedance 10M Ω). Voltage variations may be noted due to normal production tolerances.
- Signal path
 \rightarrow : FM \rightarrow : PB
- EE : East European
- IT : Italian

Ref.No.	DESCRIPTION	POSITION
S302	POWER	ON
S303 (1/2)	NORM-CrO2/METAL	NORMAL
S303 (2/2)	FM ST-MONO: DX-LOCAL	ST / DX
S304	TAPE (RADIO OFF) - AM - FM	FM
S305	AVLS	OFF
S351	MB ON-OFF	OFF
S352	DOLBY ON-OFF	OFF

SECTION 4 EXPLODED VIEWS

NOTE :

- The mechanical parts with no reference number in the exploded views are not supplied.

- Items marked "*" are not stocked since they are seldom required for routine service. Some delay should be anticipated when ordering these items.

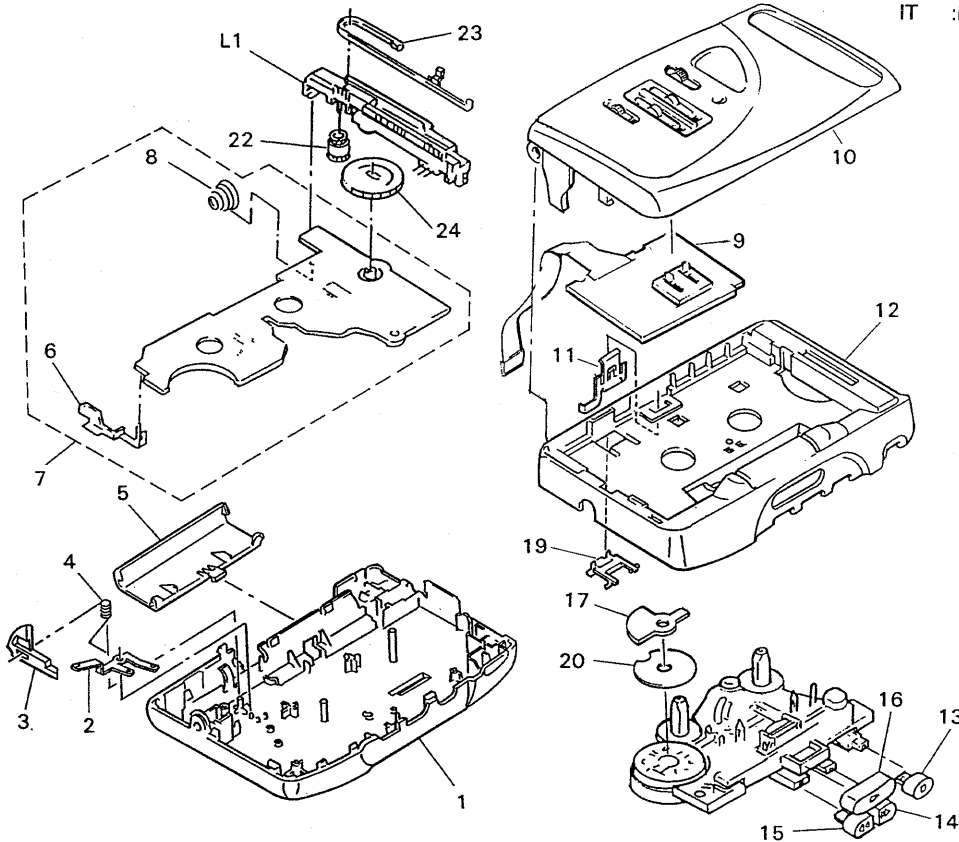
- - x x , - x mean standardized parts, so they may have some differences from the original one.

- Color Indication of Appearance Parts
Example:

KNOB, BALANCE(WHITE).....(RED)

↑ ↑
Parts color Cabinet's color

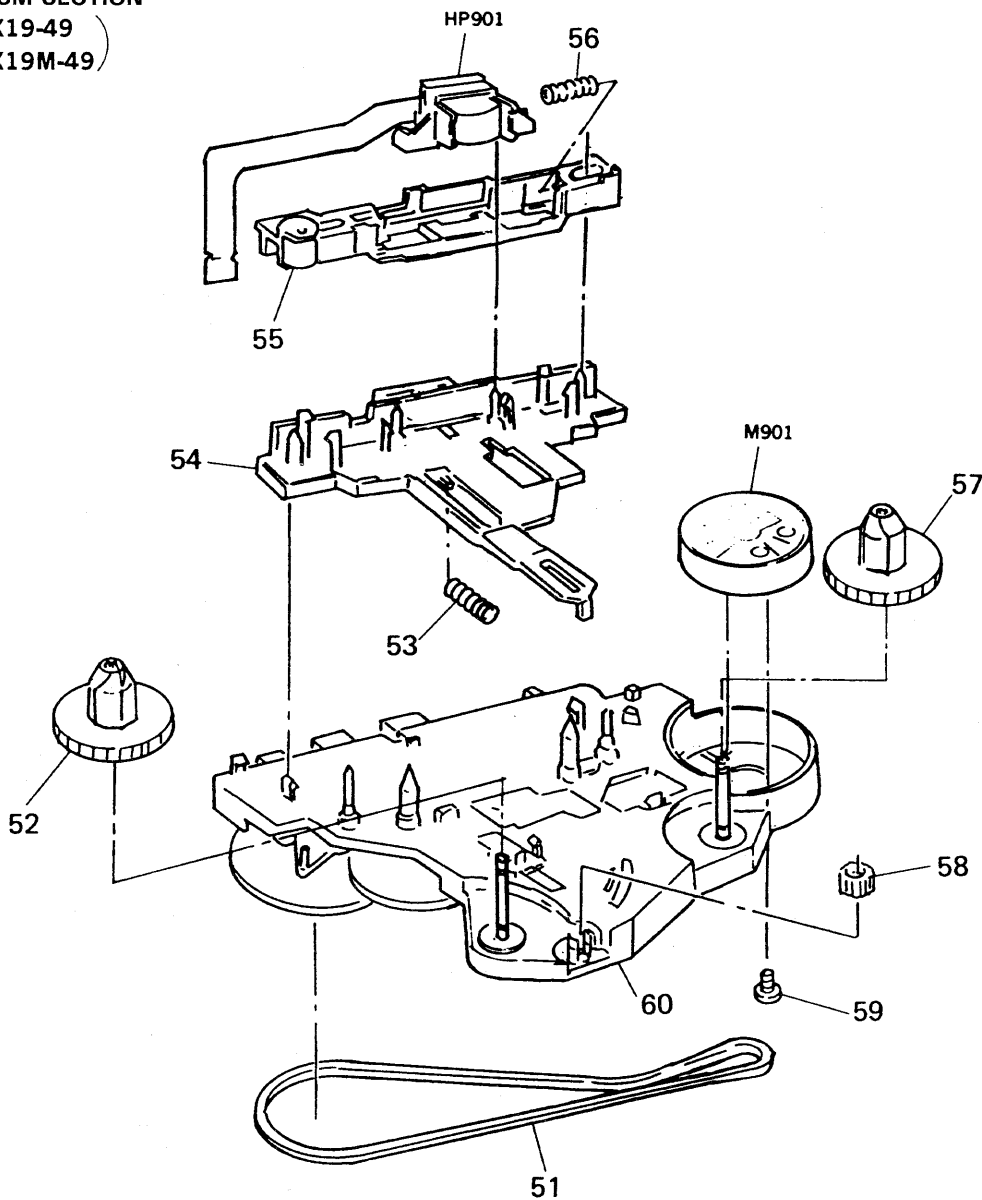
- EE :East European
IT :Italian



Ref. No.	Part No.	Description	Remarks
1	X-3366-138-1	CABINET (REAR) (CF) SUB ASSY	
2	3-386-088-01	GROUND, MOTOR	
3	3-386-086-01	LEVER, CLICK	
4	3-386-090-01	CLICK, SPRING	
5	3-386-085-01	LID, BATT	
6	3-386-209-01	TERMINAL, (+), BATTERY	
7	A-3016-332-A	MAIN BOARD, COMPLETE (AEP, E)	
7	A-3016-333-A	MAIN BOARD, COMPLETE (IT)	
7	A-3016-334-A	MAIN BOARD, COMPLETE (UK)	
7	A-3016-398-A	MAIN BOARD, COMPLETE (EE)	
8	3-386-089-01	TERMINAL, (-), BATTERY	
9	1-466-949-21	MEGA BASS UNIT	
10	X-3366-208-1	HOLDER(CF-F)SUB ASSY, CASSETTE (EE)	
10	X-3366-209-1	HOLDER(CF-F)SUB ASSY, CASSETTE (IT)	

Ref. No.	Part No.	Description	Remarks
11	3-364-675-01	SPRING (CASSETTE)	
12	3-386-091-01	CABINET (FRONT) (CF)	
13	3-364-680-01	BUTTON (STOP)	
14	3-364-679-01	BUTTON (REW)	
15	3-364-678-01	BUTTON (FF)	
16	3-364-677-01	BUTTON (PLAY)	
17	3-367-601-01	CUSHION (MOTOR)	
* 19	3-386-302-01	RETAINER (FLEXIBLE)	
* 20	3-389-199-01	PLATE (M), SHIELD (MATSUSHITA) (EE)	
* 20	3-389-200-01	PLATE (S), SHIELD (SANKYO) (EE)	
22	3-364-644-01	GEAR (TUNE)	
23	3-364-645-01	POINTER	
24	3-364-648-01	KNOB (TUNE)	

4-2. MECHANISM SECTION
 (MT-WMEX19-49)
 (MT-WMEX19M-49)



Ref.No.	PartNo.	Description	Remarks	Ref.No.	PartNo.	Description	Remarks
51	3-354-868-11	BELT		58	3-364-326-01	GEAR (REVERSE)	
52	3-364-319-01	GEAR (T REEL)		59	3-352-758-11	SCREW-(M1.7X2), TOOTHED LOCK	
53	3-364-328-01	SPRING, COMPRESSION		60	X-3362-404-1	CHASSIS ASSY	
54	3-364-321-01	LEVER, PLAY		HP901	1-543-783-11	HEAD, MAGNETIC (PLAYBACK)	
55	X-3362-319-1	PINCH LEVER ASSY		M901	1-541-841-11	MOTOR (SANKYO)	
56	3-364-329-01	SPRING, COMPRESSION		M901	1-541-842-11	MOTOR (MATSUSHITA)	
57	3-364-320-01	GEAR (S REEL)					

SECTION 5 ELECTRICAL PARTS LIST

MAIN

- Due to standardization, replacements in the parts list may be different from the parts specified in the diagrams or the components used on the set.
- Items marked "*" are not stocked since they are seldom required for routine service. Some delay should be anticipated when ordering these items.
- - x x , - x mean standardized parts, so they may have some differences from the original one.
- CAPACITORS
uF: μF

- RESISTORS
All resistors are in ohms
METAL: Metal-film resistor
METAL OXIDE: Metal Oxide-film resistor
F: nonflammable
- COILS
uH: μH
- SEMICONDUCTORS
In each case, u: μ , for example:
uA.....: μA, uPA.....: μPA,
uPB.....: μPB, uPC.....: μPC,
uPD.....: μPD

When indicating parts by reference number, please include the board name.

- EE : East European
- IT : Italian

Ref. No.	Part No.	Description	Remarks	Ref. No.	Part No.	Description	Remarks
	A-3016-332-A	MAIN BOARD, COMPLETE (AEP,E)		C20	1-164-489-11	CERAMIC CHIP	10% 16V
	A-3016-334-A	MAIN BOARD, COMPLETE (UK)		C21	1-164-489-11	CERAMIC CHIP	10% 16V
	A-3016-333-A	MAIN BOARD, COMPLETE (IT)		C22	1-163-117-00	CERAMIC CHIP	5% 50V
	A-3016-398-A	MAIN BOARD, COMPLETE (EE)		C23	1-136-103-00	CERAMIC CHIP	5% 50V
	*****						(IT)
	3-386-209-01	TERMINAL (+), BATTERY		C101	1-163-007-11	CERAMIC CHIP	10% 50V
	3-386-089-01	TERMINAL (-), BATTERY		C103	1-163-018-00	CERAMIC CHIP	5% 50V
	< CAPACITOR >			C104	1-124-239-00	ELECT	20% 10V
C1	1-163-086-00	CERAMIC CHIP	3PF 50V (AEP,UK,E)	C104	1-126-163-11	ELECT	20% 50V (EE)
C1	1-163-089-00	CERAMIC CHIP	6PF 50V (IT,EE)	C105	1-164-346-11	CERAMIC CHIP	1uF 16V
C2	1-163-100-00	CERAMIC CHIP	20PF 5% 50V (AEP,UK,E)	C106	1-164-161-11	CERAMIC CHIP	0.0022uF 10% 100V (AEP,UK,E,IT)
C2	1-163-104-00	CERAMIC CHIP	30PF 5% 50V (IT)	C106	1-163-011-11	CERAMIC CHIP	0.0015uF 10% 50V (EE)
C2	1-163-091-00	CERAMIC CHIP	8PF 50V (EE)	C107	1-164-346-11	CERAMIC CHIP	1uF 16V
C3	1-163-101-00	CERAMIC CHIP	22PF 5% 50V (AEP,UK,E)	C108	1-163-193-00	CERAMIC CHIP	330PF 10% 50V
C3	1-163-085-00	CERAMIC CHIP	2PF 50V (IT)	C201	1-163-007-11	CERAMIC CHIP	680PF 10% 50V
C3	1-163-092-00	CERAMIC CHIP	9PF 0.25PF 50V (EE)	C203	1-163-018-00	CERAMIC CHIP	0.0056uF 5% 50V
C4	1-163-092-00	CERAMIC CHIP	9PF 0.25PF 50V (AEP,UK,E)	C204	1-124-239-00	ELECT	6.9uF 20% 10V (AEP,UK,E,IT)
C4	1-163-096-00	CERAMIC CHIP	13PF 5% 50V (IT,EE)	C204	1-126-163-11	ELECT	4.7uF 20% 50V (EE)
C5	1-163-237-11	CERAMIC CHIP	27PF 5% 50V (AEP,UK,E,IT)	C205	1-164-346-11	CERAMIC CHIP	1uF 16V
C6	1-163-003-11	CERAMIC CHIP	330PF 10% 50V	C206	1-164-161-11	CERAMIC CHIP	0.0022uF 10% 100V (AEP,UK,E,IT)
C7	1-164-005-11	CERAMIC CHIP	0.47uF 25V	C206	1-163-011-11	CERAMIC CHIP	0.0015uF 10% 50V (EE)
C8	1-163-038-00	CERAMIC CHIP	0.1uF 25V	C207	1-164-346-11	CERAMIC CHIP	1uF 16V
C9	1-163-038-00	CERAMIC CHIP	0.1uF 25V	C208	1-163-193-00	CERAMIC CHIP	330PF 10% 50V
C10	1-163-038-00	CERAMIC CHIP	0.1uF 25V	C301	1-164-232-11	CERAMIC CHIP	0.01uF 50V
C11	1-163-063-00	CERAMIC CHIP	0.022uF 10% 50V	C302	1-164-346-11	CERAMIC CHIP	1uF 16V
C12	1-163-038-00	CERAMIC CHIP	0.1uF 25V	C303	1-135-158-21	TANTALUM CHIP	15uF 20% 4V (AEP,UK,E,IT)
C13	1-163-009-11	CERAMIC CHIP	0.001uF 10% 50V	C303	1-135-202-21	TANTAL. CHIP	22uF 20% 4V (EE)
C14	1-126-153-11	ELECT	22uF 20% 6.3V	C304	1-164-489-11	CERAMIC CHIP	0.22uF 10% 16V
C15	1-163-078-11	CERAMIC CHIP	0.033uF 10% 25V	C305	1-126-153-11	ELECT	22uF 20% 6.3V
C16	1-164-346-11	CERAMIC CHIP	1uF 16V	C306	1-135-180-21	TANTALUM CHIP	3.3uF 20% 6.3V (AEP,UK,E,IT)
C17	1-126-154-11	ELECT	47uF 20% 6.3V	C306	1-135-149-21	TANTALUM CHIP	2.2uF 20% 10V (EE)
C18	1-163-986-00	CERAMIC CHIP	0.027uF 10% 25V	C308	1-135-180-21	TANTALUM CHIP	3.3uF 20% 6.3V
C19	1-163-986-00	CERAMIC CHIP	0.027uF 10% 25V	C309	1-164-004-11	CERAMIC CHIP	0.1uF 10% 25V (AEP,UK,E,IT)

MAIN

Ref.No.	Part No.	Description	Remarks	Ref.No.	Part No.	Description	Remarks
C310	1-135-149-21	TANTALUM CHIP	2.2uF 20% 10V (EE)			< JACK >	
C311	1-164-346-11	CERAMIC CHIP	1uF 16V	J301	1-750-061-11	JACK,DC(POLARITY UNIFIED TYPE)(DC IN 3V)	
C312	1-164-004-11	CERAMIC CHIP	0.1uF 10% 25V (AEP,UK,E,IT)	J302	1-565-287-11	JACK,(PHONES)	
C313	1-164-346-11	CERAMIC CHIP	1uF 16V			< JUMPER RESISTOR >	
C314	1-164-346-11	CERAMIC CHIP	1uF 16V	JR1	1-216-295-00	METAL CHIP 0 5% 1/10W	
C315	1-126-157-11	ELECT	10uF 20% 16V	JR2	1-216-295-00	METAL CHIP 0 5% 1/10W	
C316	1-163-205-00	CERAMIC CHIP	0.001uF 5% 50V (AEP,UK,E,IT)	JR3	1-216-295-00	METAL CHIP 0 5% 1/10W (EE)	
C317	1-163-035-00	CERAMIC CHIP	0.047uF 50V			< COIL >	
C318	1-163-035-00	CERAMIC CHIP	0.047uF 50V	L1	1-501-489-11	ANTENNA, FERRITE-ROD (MW)	
C319	1-164-004-11	CERAMIC CHIP	0.1uF 10% 25V (AEP,UK,E,IT)	L2	1-460-120-11	COIL (WITH CORE) (RF) (AEP,UK,E)	
C322	1-163-181-00	CERAMIC CHIP	100PF 5% 50V (AEP,UK,E,IT)	L2	1-460-124-11	COIL (WITH CORE) (RF) (IT)	
C323	1-163-117-00	CERAMIC CHIP	100PF 5% 50V (AEP,UK,E,IT)	L2	1-426-578-11	COIL (WITH CORE) (RF) (EE)	
C324	1-163-009-11	CERAMIC CHIP	0.001uF 10% 50V (AEP,UK,E,IT)	L3	1-460-126-11	COIL (WITH CORE) (FM OSC) (AEP,UK,E)	
C601	1-124-434-00	ELECT	220uF 20% 4V	L3	1-460-130-11	COIL (WITH CORE) (FM OSC) (IT)	
C602	1-164-005-11	CERAMIC CHIP	0.47uF 25V	L3	1-406-444-11	COIL (WITH CORE) (FM OSC) (EE)	
C603	1-135-208-11	TANTAL. CHIP	1uF 20% 10V (AEP,UK,E,EE)	L4	1-406-408-11	COIL (AM OSC) (AEP,E)	
C604	1-163-009-11	CERAMIC CHIP	0.001uF 10% 50V	L4	1-406-411-11	COIL (AM OSC) (UK)	
C605	1-163-037-11	CERAMIC CHIP	0.022uF 10% 25V (AEP,UK,E,IT)	L4	1-406-409-11	COIL (AM OSC) (IT,EE)	
		< FILTER >		L5	1-412-006-31	INDUCTOR CHIP 10uH	
CF1	1-527-870-41	FILTER (AEP,E,IT,EE)		L6	1-412-006-31	INDUCTOR CHIP 10uH	
CF1	1-567-129-00	FILTER, CERAMIC (UK)		L301	1-409-483-11	COIL, TRAP	
CF2	1-567-198-71	FILTER, CRYSTAL		L302	1-410-999-11	INDUCTOR CHIP 3.3uH	
		< CONNECTOR >				< TRANSISTOR >	
CN301	1-569-252-21	HOUSING, CONNECTOR (FPC) 5P		Q1	8-729-403-17	TRANSISTOR XN1215	
* CN302	1-750-093-11	HOUSING, CONNECTOR 11P		Q2	8-729-216-22	TRANSISTOR 2SA1162	
		< COMPOSITION CIRCUIT BLOCK >		Q101	8-729-207-65	TRANSISTOR RN1410	
CP1	1-236-711-21	FILTER, BAND PASS (AEP,UK,E,IT)		Q201	8-729-207-65	TRANSISTOR RN1410	
CP1	1-235-826-11	FILTER, BAND PASS (EE)		Q302	8-729-216-22	TRANSISTOR 2SA1162	
		< VARIABLE CAPACITOR >		Q303	8-729-402-13	TRANSISTOR XN1501	
CV1	1-151-629-21	CAP, VAR, POLYETHYLENE (AEP,UK,E,IT)				< RESISTOR >	
CV1	1-151-692-11	CAP, VAR (EE)		R1	1-216-001-00	METAL CHIP 10 5% 1/10W (AEP,UK,E,IT)	
		< DIODE >		R1	1-216-003-11	METAL GLAZE 12 5% 1/10W (EE)	
D1	8-719-421-03	DIODE,MA732		R2	1-216-081-00	METAL CHIP 22K 5% 1/10W	
		< IC >		R3	1-216-065-00	METAL CHIP 4.7K 5% 1/10W	
IC1	8-759-230-39	IC TA8122AF		R4	1-216-065-00	METAL CHIP 4.7K 5% 1/10W	
IC301	8-759-161-54	IC LA4582M		R5	1-216-073-00	METAL CHIP 10K 5% 1/10W	
IC601	8-759-999-06	IC MM1038F		R101	1-216-083-00	METAL CHIP 27K 5% 1/10W	
				R103	1-216-077-00	METAL CHIP 15K 5% 1/10W	
				R104	1-216-077-00	METAL CHIP 15K 5% 1/10W	
				R105	1-216-117-00	METAL CHIP 680K 5% 1/10W	
				R106	1-216-043-00	METAL CHIP 560 5% 1/10W	
				R108	1-216-069-00	METAL CHIP 6.8K 5% 1/10W (AEP,UK,E,IT)	
				R109	1-216-091-00	METAL CHIP 56K 5% 1/10W	
				R201	1-216-083-00	METAL CHIP 27K 5% 1/10W	
				R203	1-216-077-00	METAL CHIP 15K 5% 1/10W	

Ref.No.	Part No.	Description	Remarks		Ref.No.	Part No.	Description	Remarks
R204	1-216-077-00	METAL CHIP	15K 5% 1/10W				< THERMISTOR >	
R205	1-216-117-00	METAL CHIP	680K 5% 1/10W		TH601	1-809-279-11	THERMISTOR, POSITIVE	
R206	1-216-043-00	METAL CHIP	560 5% 1/10W		TH602	1-809-029-11	THERMISTOR, POSITIVE	
R208	1-216-069-00	METAL CHIP	6.8K 5% 1/10W	(AEP, UK, E, IT)			< VIBRATOR >	
R209	1-216-091-00	METAL CHIP	56K 5% 1/10W		X1	1-577-091-21	OSCILLATOR, CRYSTAL (19.0KHz)	
R301	1-216-109-00	METAL CHIP	330K 5% 1/10W		X2	1-567-198-71	FILTER, CRYSTAL	
R302	1-216-117-00	METAL CHIP	680K 5% 1/10W		*****			
R303	1-216-089-00	METAL CHIP	47K 5% 1/10W				MISCELLANEOUS	
R304	1-216-101-00	METAL CHIP	150K 5% 1/10W				*****	
R305	1-216-081-00	METAL CHIP	22K 5% 1/10W		9	1-466-949-21	MEGA BASS UNIT	
R306	1-216-057-00	METAL CHIP	2.2K 5% 1/10W		HP901	1-543-785-11	HEAD, MAGNETIC (PLAYBACK)	
R307	1-216-113-00	METAL CHIP	470K 5% 1/10W	(AEP, UK, E, IT)	M901	1-541-841-11	MOTOR (SANKYO)	
R307	1-216-099-00	METAL CHIP	120K 5% 1/10W	(EE)	M901	1-541-841-12	MOTOR (MATSUSHITA)	
R308	1-216-065-00	METAL CHIP	4.7K 5% 1/10W		*****			
R309	1-216-112-00	METAL GLAZE	430K 5% 1/10W				ACCESSORIES & PACKING MATERIALS	
R601	1-216-298-00	METAL CHIP	2.2 5% 1/10W				*****	
R602	1-216-301-11	METAL GLAZE	2.4 5% 1/10W	(FOR SANKYO)	3-346-518-01		CLIP, BELT	
R602	1-217-907-11	METAL GLAZE	1.8 5% 1/10W	(FOR MATSUSHITA)	*	3-385-509-01	CUSHION	
R603	1-216-046-00	METAL CHIP	750 5% 1/10W		*	3-385-521-01	INDIVIDUAL CARTON (AEP, IT)	
		< VARIABLE RESISTOR >			*	3-385-523-01	INDIVIDUAL CARTON (UK)	
RV301	1-223-303-11	RES, VAR, CARBON 30K/30K (VOL)			*	3-385-574-01	INDIVIDUAL CARTON (E)	
RV601	1-241-028-11	RES, ADJ, CARBON 330 (SPEED)(AEP, UK, E, IT)				3-389-218-01	INDIVIDUAL CARTON (EE)	
RV601	1-223-212-11	RES, ADJ, CARBON 330 (SPEED)(EE)				3-756-428-11	MANUAL, INSTRUCTION (AEP, UK, E, IT)	
		< SWITCH >					(ENGLISH, FRENCH, SPANISH, PORTUGUESE, GERMANY, DUTCH, SWEDISH, ITALIAN)	
S302	1-571-986-11	SWITCH, LEAF (POWER)				3-756-428-51	MANUAL, INSTRUCTION (EE)	
S303	1-692-298-11	SWITCH, SLIDE (TAPE SEL)					(ENGLISH, FRENCH, POLISH, RUSSIAN)	
S304	1-692-299-11	SWITCH, SLIDE (FUNCTION)			8-953-538-90		HEADPHONE MDR-E741//K SET (AEP, E, IT, EE)	
S305	1-692-299-11	SWITCH, SLIDE (AVLS SET)			8-953-546-90		HEADPHONE MDR-E741V SET (UK)	
		< TRANSFORMER >			X-3329-657-1		ATTACHMENT ASSY	
T1	1-404-949-11	TRANSFORMER, IF (AEP, E, IT, EE)						
T1	1-404-951-21	TRANSFORMER, IF (UK)						

