

*SCX-3200  
H/W Training*

## Agenda

- I. H/W Specifications
- II. Block Diagram
- III. Connection Diagram
- IV. Summary of major parts
- V. Trouble shooting

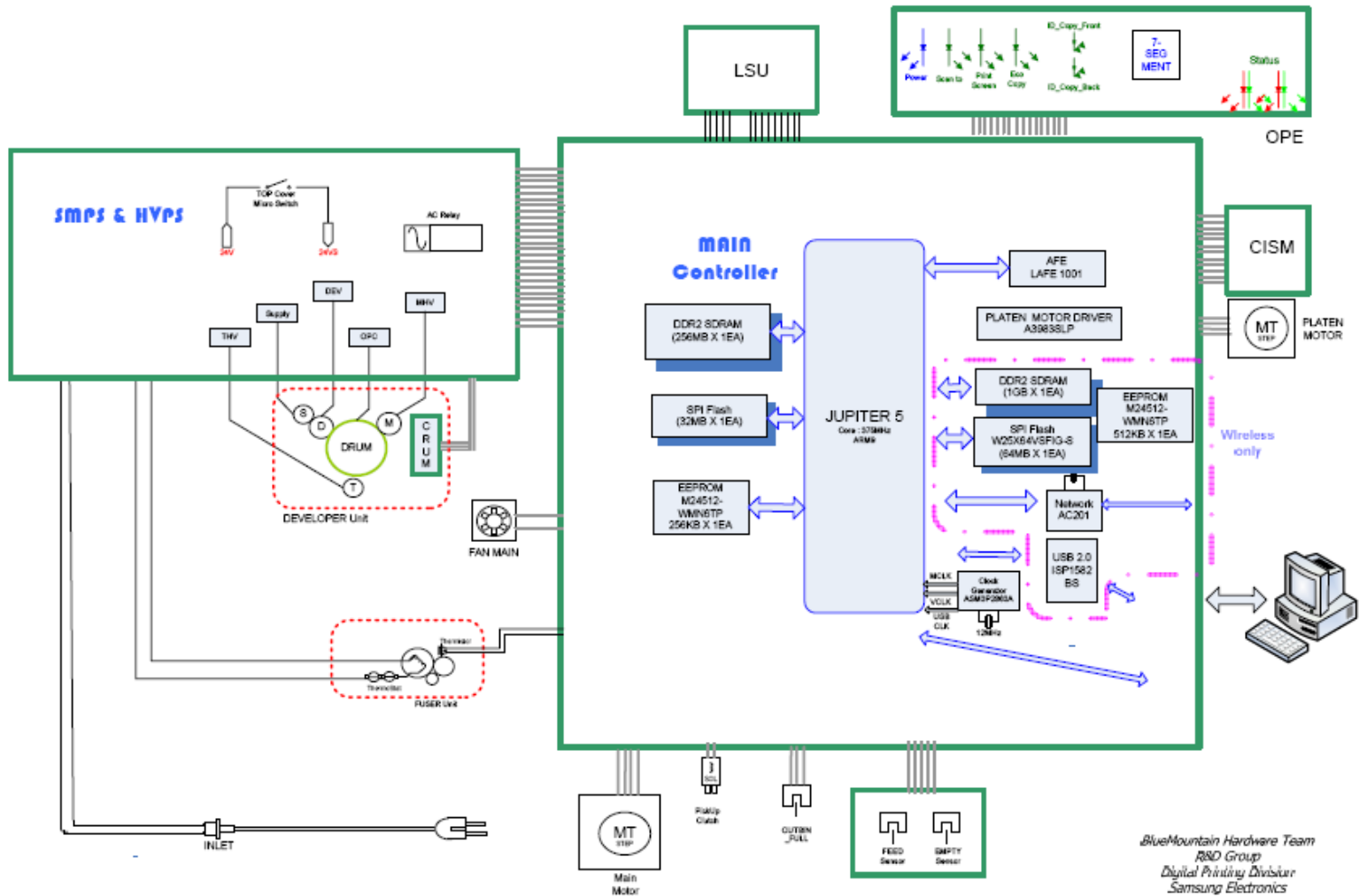
# I. SPECIFICATION

	SCX-3200	SCX-3205W
Processor	JUPITER5 (375MHz)	
Program Memory	Serial Flash 4MB * 1EA	Serial Flash 8MB * 1EA
Working Memory	DDR2 SDRAM 32MB * 1EA	DDR2 SDRAM 128MB * 1EA
Power Rating	220~240VAC, 2.0A, 50/60Hz 110~127VAC, 4.0A, 50/60Hz	220~240VAC, 2.0A, 50/60Hz 110~127VAC, 4.0A, 50/60Hz
Power Consumption	Less than 270W (Print) Less than 3.8W(Sleep) Less than 36W (Standby)	Less than 270W (Print) Less than 5.6W(Sleep) Less than 36W (Standby)
PC Interfaces	Hi-speed USB 2.0	Hi-speed USB 2.0 Ethernet 10/100 Base Tx Wireless LAN 802.11 b/g/n
User interface	7 – Segment (2-Digit)	7 – Segment (2-Digit)
Print Speed	Up to 16ppm in A4	Up to 16ppm in A4
SCAN module	CIS	CIS

# II. BLOCK DIAGRAM

## BLUEMOUNTAIN Connection Diagram

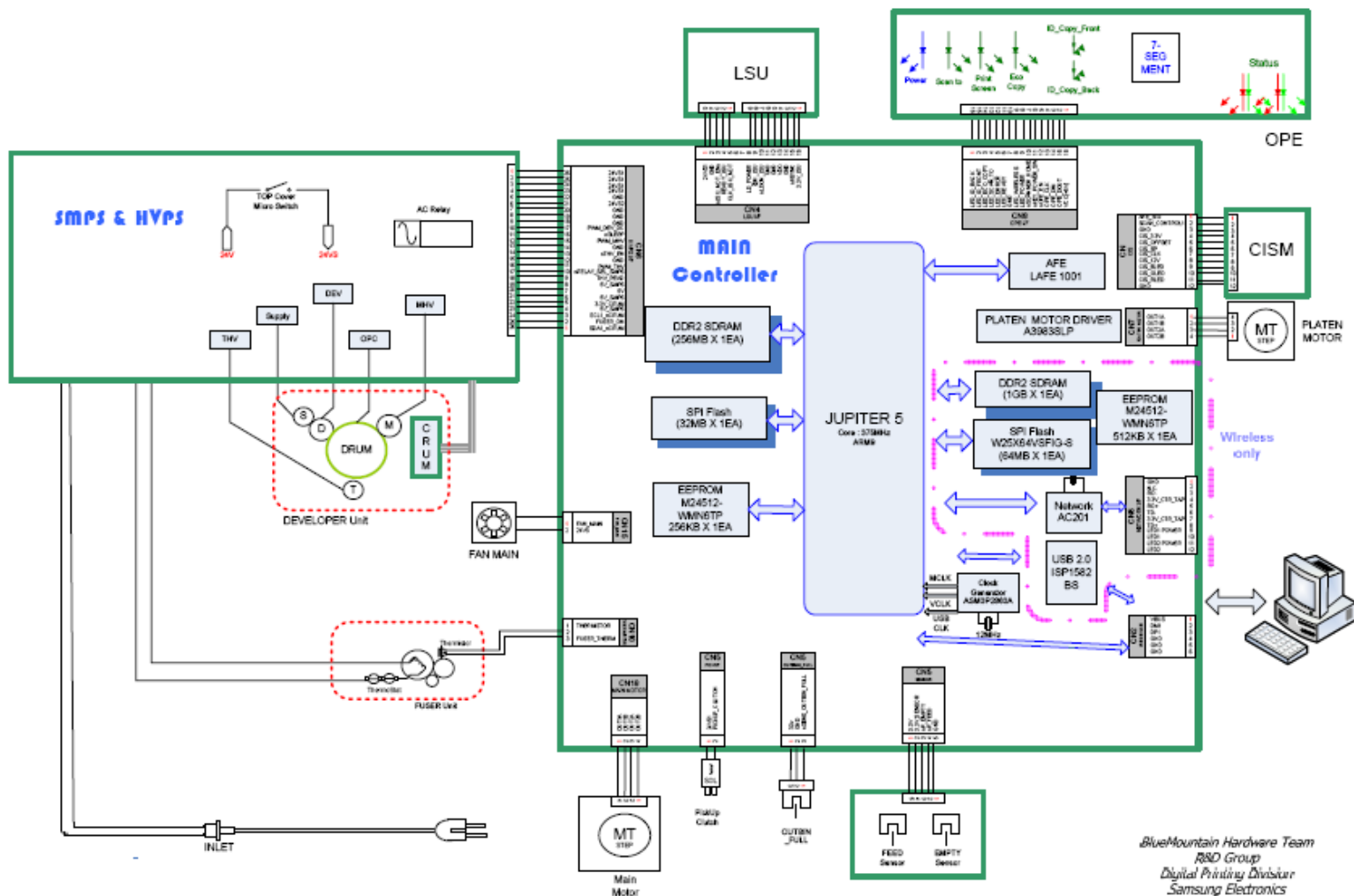
Revision 0.5



# III. CONNECTION DIAGRAM

## BLUEMOUNTAIN Connection Diagram

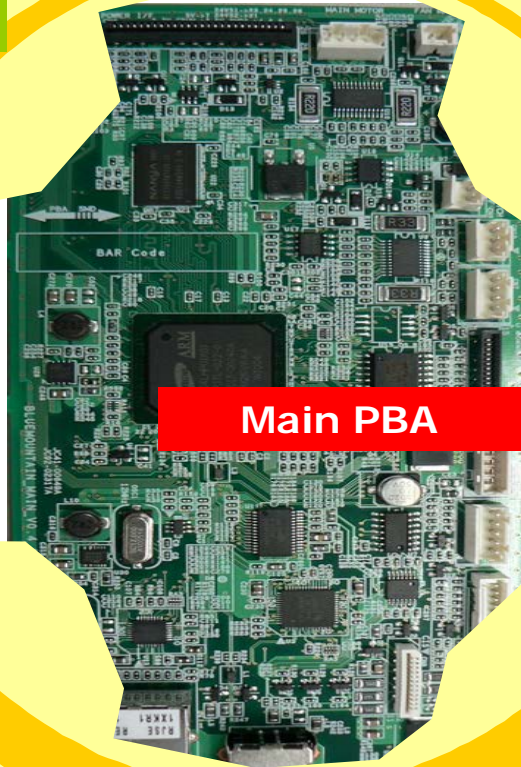
Revision 0.5



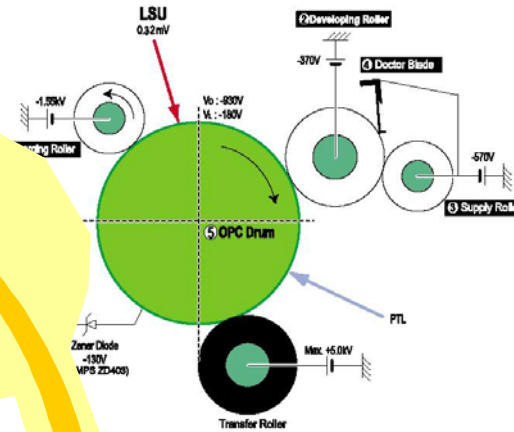
# IV. SUMMARY



OPE

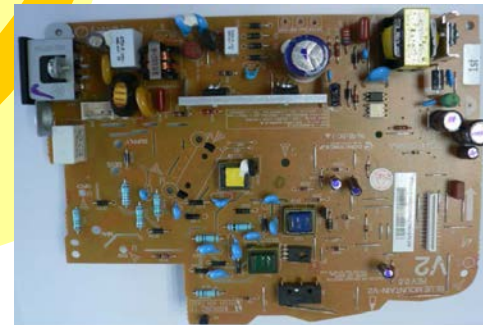


Main PBA

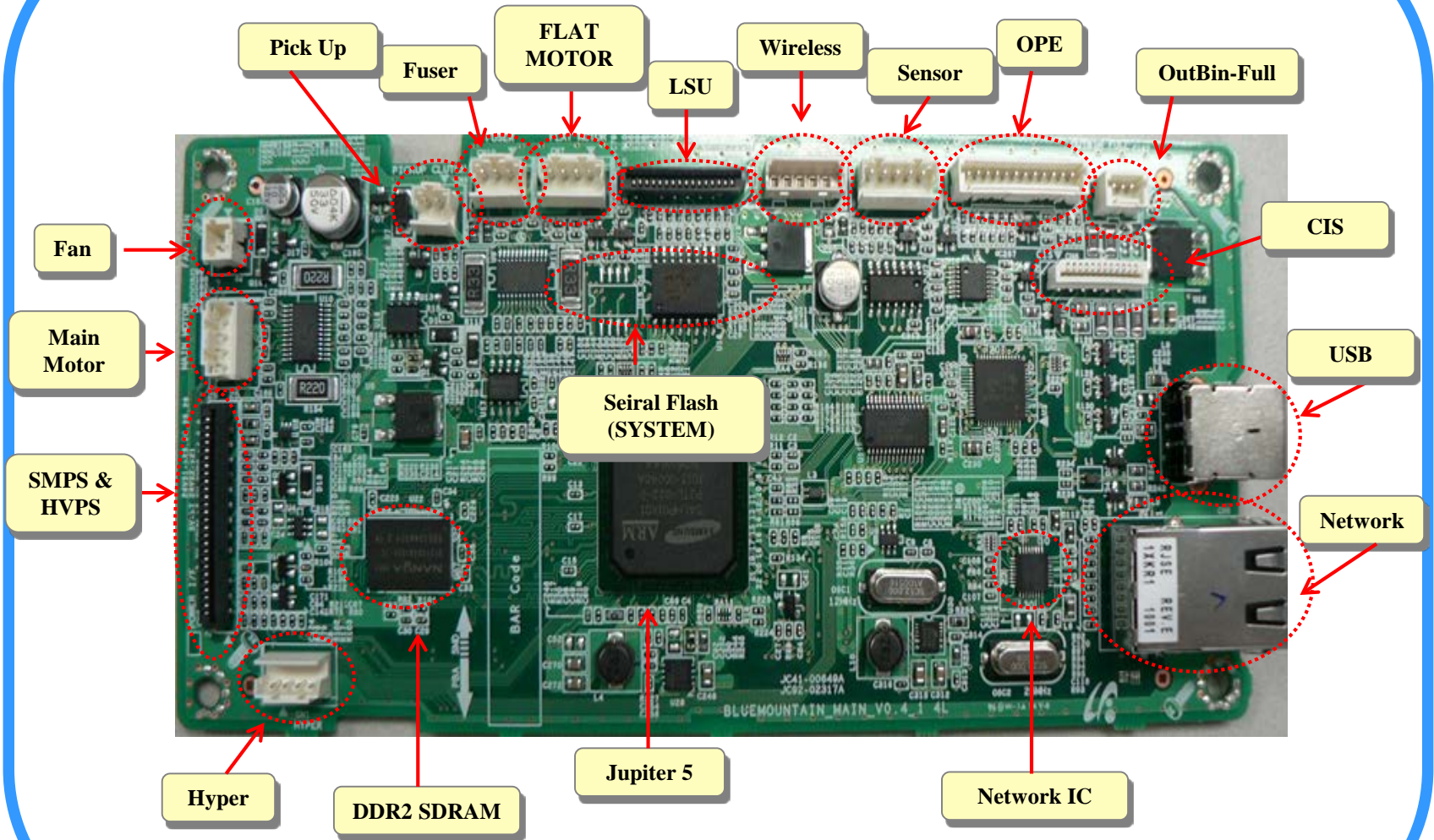


Printer Engine (BlueBird)

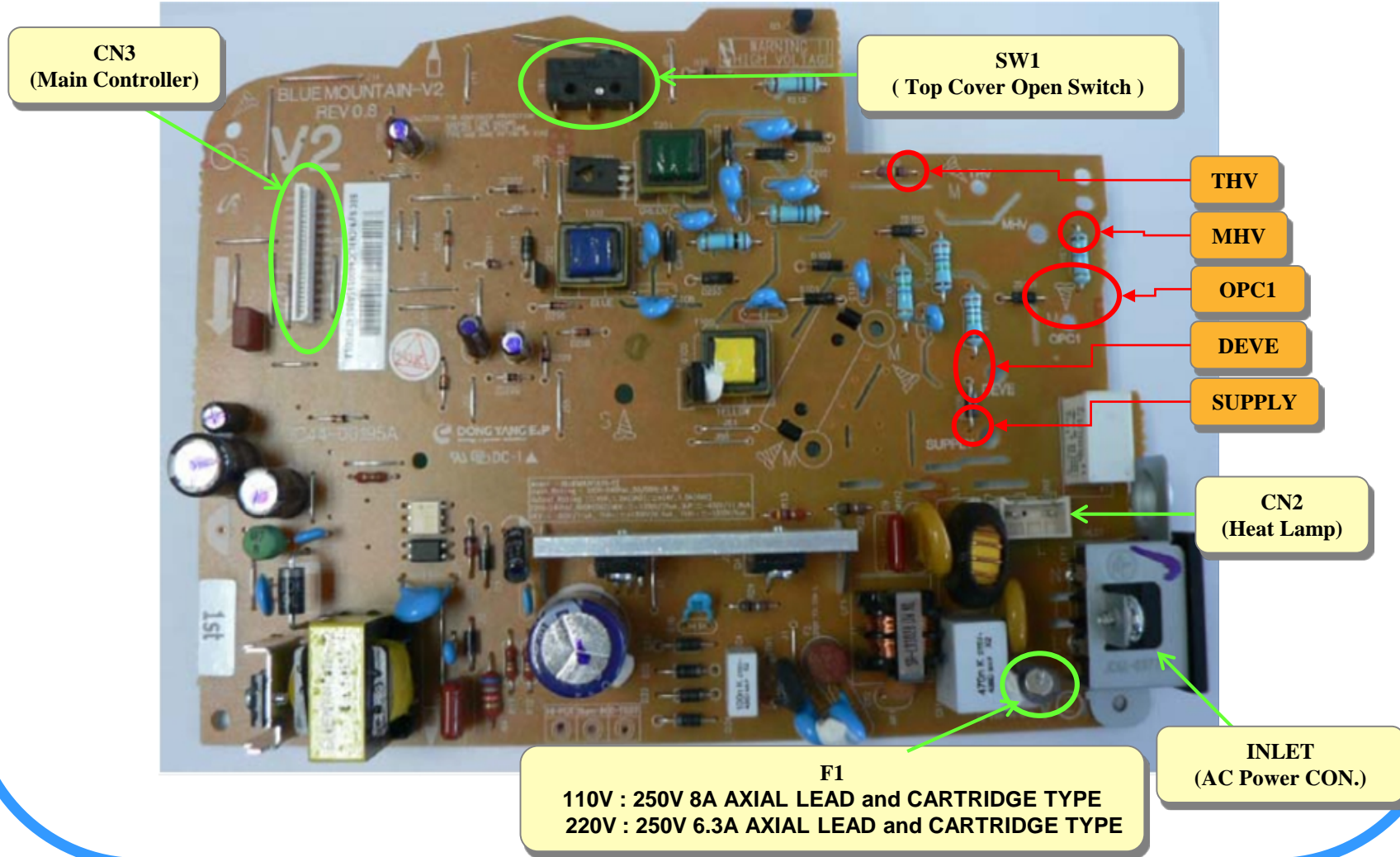
SMPS & HVPS



## Main PBA

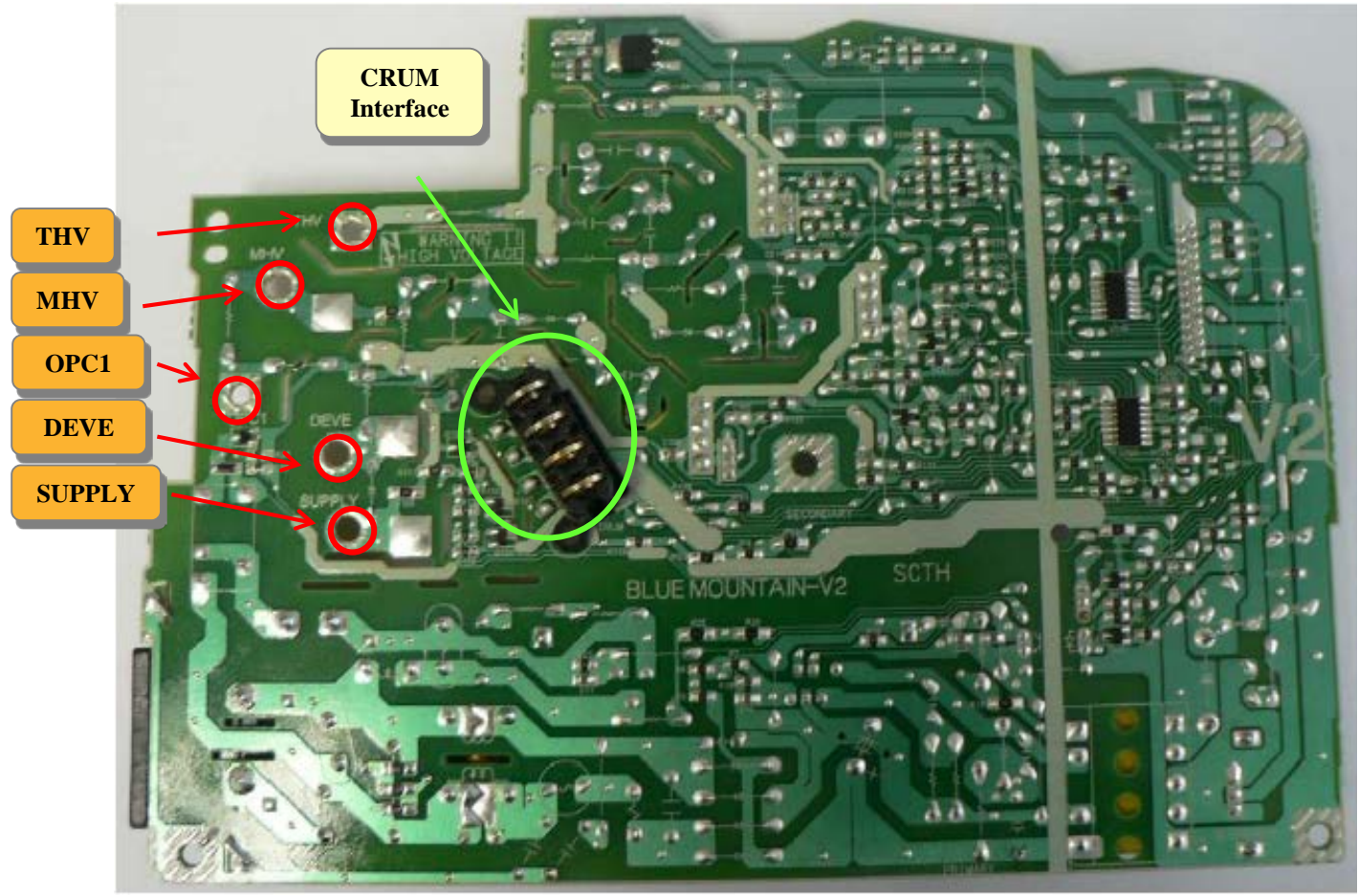


# SMPS & HVPS (Top)



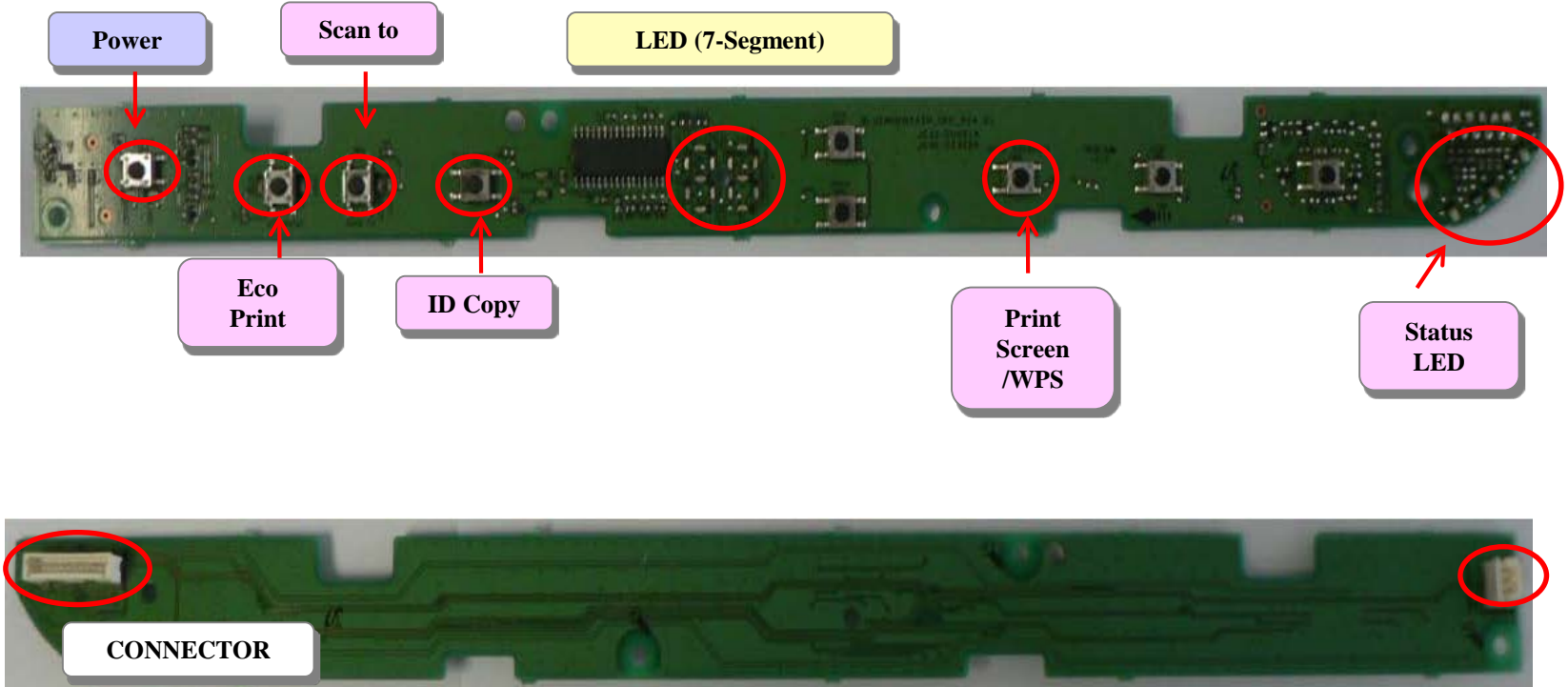


## SMPS & HVPS (Bottom)



## OPE PBA

SCX-3200 , SCX-3205W( 3 in 1 )



## CIS MODULE

MAIN PBA CON.



### SCANNER SPECIFICATIONS

ITEM	DESCRIPTION	
Compatibility	TWAIN standard/WIA standard	
Scanning method	Color CIS	
Resolution <sup>a</sup>	TWAIN standard	Up to 600 x 600 dpi (Up to 4,800 x 4,800 dpi by software enhancement)
	WIA standard	Up to 600 x 600 dpi
	Scan to PC	75, 150, 200, 300, 600 dpi
	Scan to Email	100, 200, 300dpi

### COPIER SPECIFICATIONS

ITEM	DESCRIPTION	
Copy Speed <sup>a</sup>	<ul style="list-style-type: none"> <li>Up to 22 cpm (A4), 23 cpm (Letter)</li> <li>Up to 12 cpm (A4)<sup>b</sup></li> </ul>	
Copy resolution	Text	Scanner glass: Up to 300 x 300 dpi Document feeder: Up to 300 x 300 dpi
	Text/photo	Scanner glass: Up to 300 x 300 dpi Document feeder: Up to 300 x 300 dpi
	Photo	Scanner glass: Up to 600 x 600 dpi Document feeder: Up to 300 x 300 dpi
Zoom range	Scanner glass: 25% to 400% Document feeder: 25% to 100%	

a. Copy speed is based on Single Document Multiple Copy.  
 b. For Austria, Belgium, Germany, Spain. (Copy speed varies by countries.)

## Trouble & Solution (1)

Error	Light Image
[Description ]	<b>The printed image is light with no ghost.</b>
[Wrong Part]	<b>1. Developer 2. HVPS</b>
[Check and Cause]	<b>1. Develop roller is stained when the toner of developer cartridge is almost consumed. 2. Bad contact between the HVPS and the one in the set. 3. Abnormal output from the HVPS.</b>
[Solution]	<b>1. Check if the Toner Save mode is on. 2. Replace the developer cartridge and try to print out. 3. Clean up the contaminated area by the toner. 4. Replace the HVPS if the problems are not solved by the above four directions.</b>

## Trouble & Solution (2)

Error	Fuser Error (Low, Over Heat Error)
[Description]	<b>1. 7-segment Display : "U1", "2141" ( Over_Heat Error ) "U1", "2131" ( Low_Heat Error )</b>
[Wrong Part]	<b>1. Fuser 2. Main Controller</b>
[Check and Cause]	<b>1. Check if the thermostat, connection between AC wire and Heat Lamp, is open. 2. Check if the thermistor sensor is located in proper position. 3. Check if the heat lamp works properly. 4. Check the resistor value of the heat lamp.</b>
[Solution]	<b>1. If the thermostat is open, replace the fuser. 2. If the thermistor is located deep in the sponge, replace the fuser. 3. If the resistor value of the heat lamp is not right, replace the heat lamp.</b>

## Trouble & Solution (3)

Error	LSU Error (LSU Motor Error)
[Description]	<ol style="list-style-type: none"><li>1. nLSU_READY signal is not normal.</li><li>2. 7-segment Display : "U2", "5111"</li></ol>
[Wrong Part]	<ol style="list-style-type: none"><li>1. LSU</li><li>2. LSU Harness</li><li>3. Main Controller</li></ol>
[Check and Cause]	<ol style="list-style-type: none"><li>1. Pmotor is stable.</li><li>2. LSU_3.3V is supplied properly.</li></ol>
[Solution]	<ol style="list-style-type: none"><li>1. Check the LSU Harness.</li><li>2. Check the LSU_3.3V.</li><li>3. Replace LSU.</li><li>4. If you cannot solve the problem after you replace LSU, replace the main controller.</li></ol>

## Trouble & Solution (4)

Error	Cover Open
[Description]	1. 7-segment Display : "S2", "4110"
[Wrong Part]	1. Hook Lever in the top cover 2. SMPS
[Check and Cause]	1. The Hook Lever in the top cover may be defective. 2. Power on and check if main motor is working.
[Solution]	1. Replace the hook lever, if defective. 2. Replace the SMPS.

## Trouble & Solution (5)

Error	No Power
[Description ]	Even if press the power key, all LEDs on the operator panel do not act.
[Wrong Part]	1. SMPS
[Check and Cause]	1. Check if the power input and SMPS output are normal. 2. Check the LED on the SMPS in case the set acts by normal warming-up.
[Solution]	1. Replace the power supply cord or SMPS. 2. Replace the main controller.



## Trouble & Solution (6)

Error	Hsync Error
[Description]	<ol style="list-style-type: none"><li>1. The printing is stopped in the feed status.</li><li>2. 7-segment Display : "U2", "5113"</li></ol>
[Wrong Part]	<ol style="list-style-type: none"><li>1. LSU</li><li>2. LSU Harness</li><li>3. Main Controller</li></ol>
[Check and Cause]	<ol style="list-style-type: none"><li>1. Extraneous substance stuck on the window of internal lenses of LSU mirror .</li><li>2. Main Controller LSU Part defect</li></ol>
[Solution]	<ol style="list-style-type: none"><li>1. Check the LSU Harness.</li><li>2. Replace LSU.</li><li>3. Replace Main Controller.</li></ol>

## Trouble & Solution (7)

Error	ADF copy Vertical Black Line
[Description ]	There are some vertical black line on the paper when copying using the ADF.
[Wrong Part]	<ol style="list-style-type: none"><li>1. Glass and transparent sheet.</li><li>2. CISM.</li></ol>
[Check and Cause]	<ol style="list-style-type: none"><li>1. Check whether there are some dust between the transparent sheet and the grass on the platen unit.</li><li>2. Do a shading test.</li></ol>
[Solution]	<ol style="list-style-type: none"><li>1. Make the platen unit clean.</li><li>2. Replace the CIS.</li></ol>